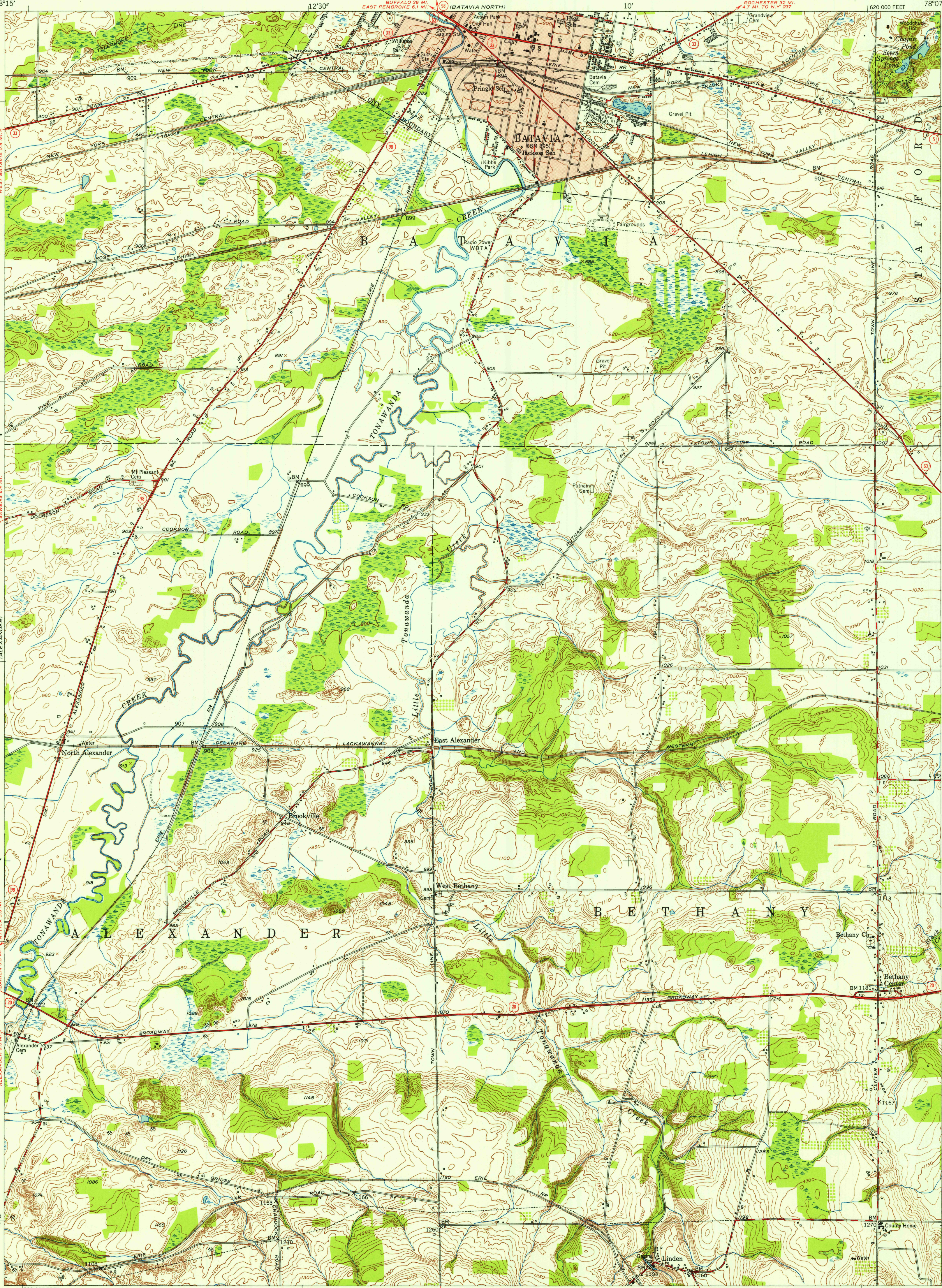
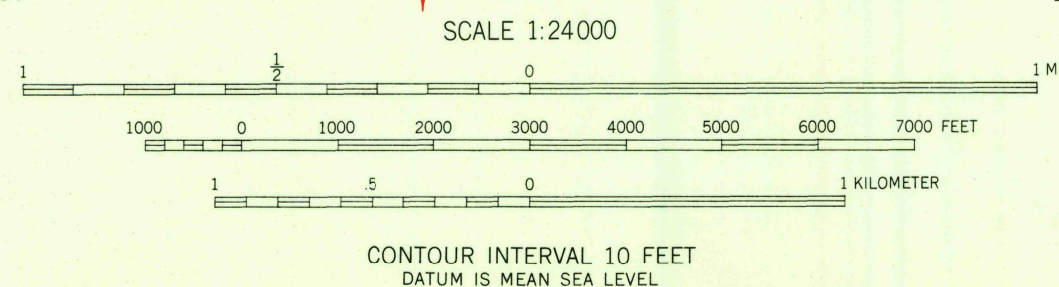


FILE COPY  
Inspection and Editing



Mapped, edited, and published by the Geological Survey  
Control by USGS, USC&GS, and USCE  
Culture and drainage in part compiled by Corps of Engineers,  
Dept. of the Army, from aerial photographs taken 1942  
Topography by plane-table methods 1950  
Polyconic projection. 1927 North American datum  
10,000-foot grid based on New York coordinate system,  
west zone  
Red tint indicates area in which only  
landmark buildings are shown

APPROXIMATE MEAN  
DECLINATION, 1950



USGS  
Historical File  
Topographic Division

FILE COPY  
Inspection and Editing

ROAD CLASSIFICATION  
Heavy-duty ——— 4 LANE 6 LANE Light-duty ———  
Medium-duty ——— 4 LANE 6 LANE Unimproved dirt ———  
U. S. Route ——— State Route ———

BATAVIA SOUTH, N. Y.  
NW/4 BATAVIA 15' QUADRANGLE  
N4252.5-W7807.5/7.5

1950

THIS MAP COMPLIES WITH NATIONAL MAP ACCURACY STANDARDS  
FOR SALE BY U. S. GEOLOGICAL SURVEY, WASHINGTON 25, D. C.  
A FOLDER DESCRIBING TOPOGRAPHIC MAPS AND SYMBOLS IS AVAILABLE ON REQUEST