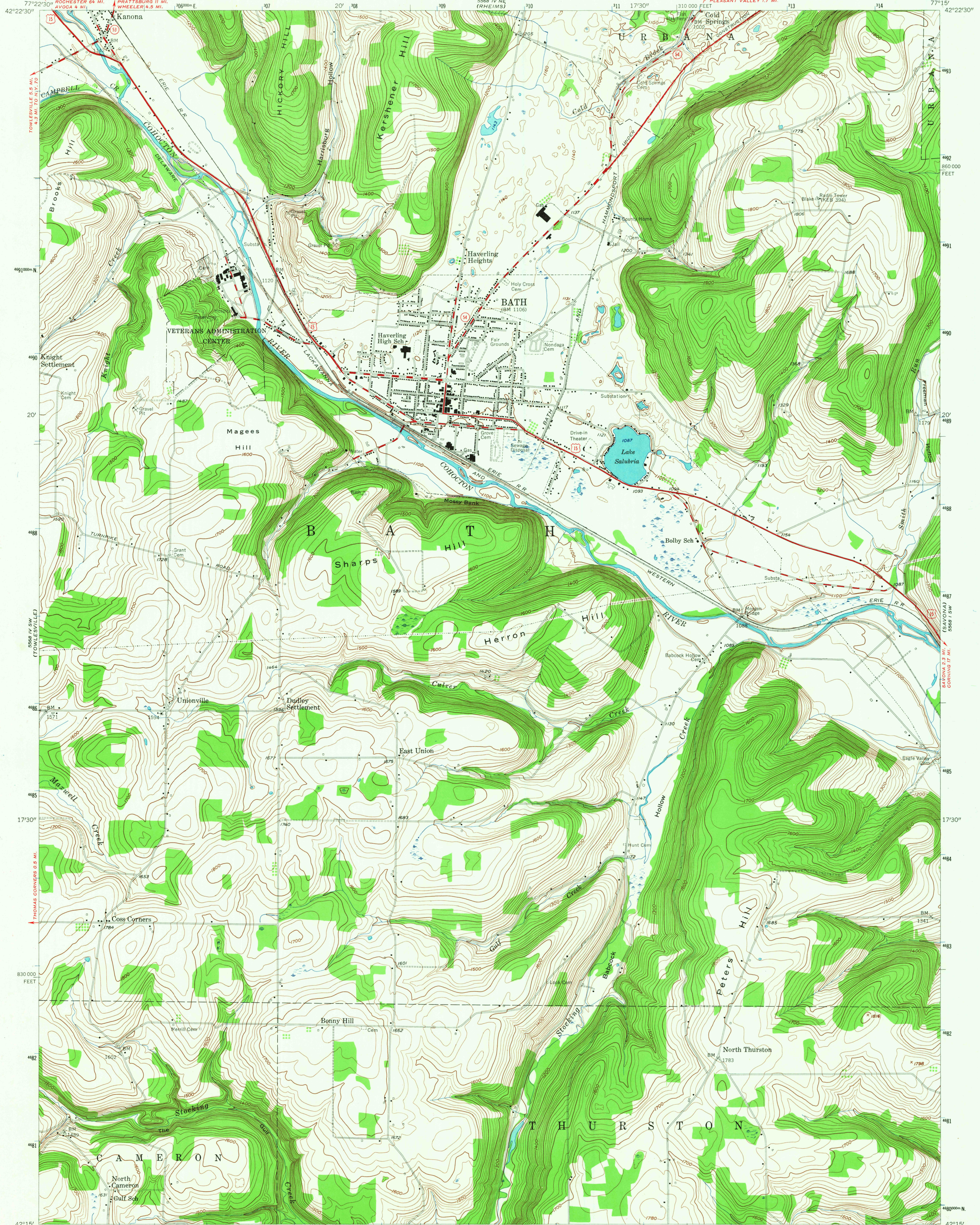


UNITED STATES
DEPARTMENT OF THE INTERIOR
GEOLOGICAL SURVEY

BATH QUADRANGLE
NEW YORK—STEBEN CO.
7.5 MINUTE SERIES (TOPOGRAPHIC)
SE/4 BATH 15' QUADRANGLE



Mapped, edited, and published by the Geological Survey

Control by USGS and USCGS

Topography from aerial photographs by multiplex methods

Aerial photographs taken 1952. Field check 1953

Polyconic projection. 1927 North American datum

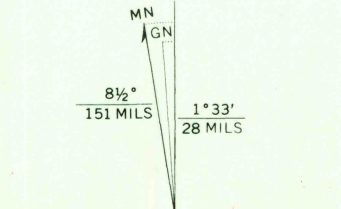
10,000-foot grid based on New York coordinate system,

central zone

Unchecked elevations are shown in brown

1000-meter Universal Transverse Mercator grid ticks,

zone 18, shown in blue



CONTOUR INTERVAL 20 FEET

DATUM IS MEAN SEA LEVEL

THIS MAP COMPLIES WITH NATIONAL MAP ACCURACY STANDARDS
FOR SALE BY U.S. GEOLOGICAL SURVEY, WASHINGTON, D. C. 20242
A FOLDER DESCRIBING TOPOGRAPHIC MAPS AND SYMBOLS IS AVAILABLE ON REQUEST

USGS
Historical File
Topographic Division



U.S.G.S.

FILE COPY
TOPOGRAPHIC DIVISION

ROAD CLASSIFICATION
Heavy-duty ——— Light-duty ———
Medium-duty ——— Unimproved dirt ———
U.S. Route ——— State Route ———

BATH, N. Y.

SE/4 BATH 15' QUADRANGLE

N4215—W7715/7.5

1953

AMS 5568 IV SE—SERIES V821

2550

JUL 3 1967