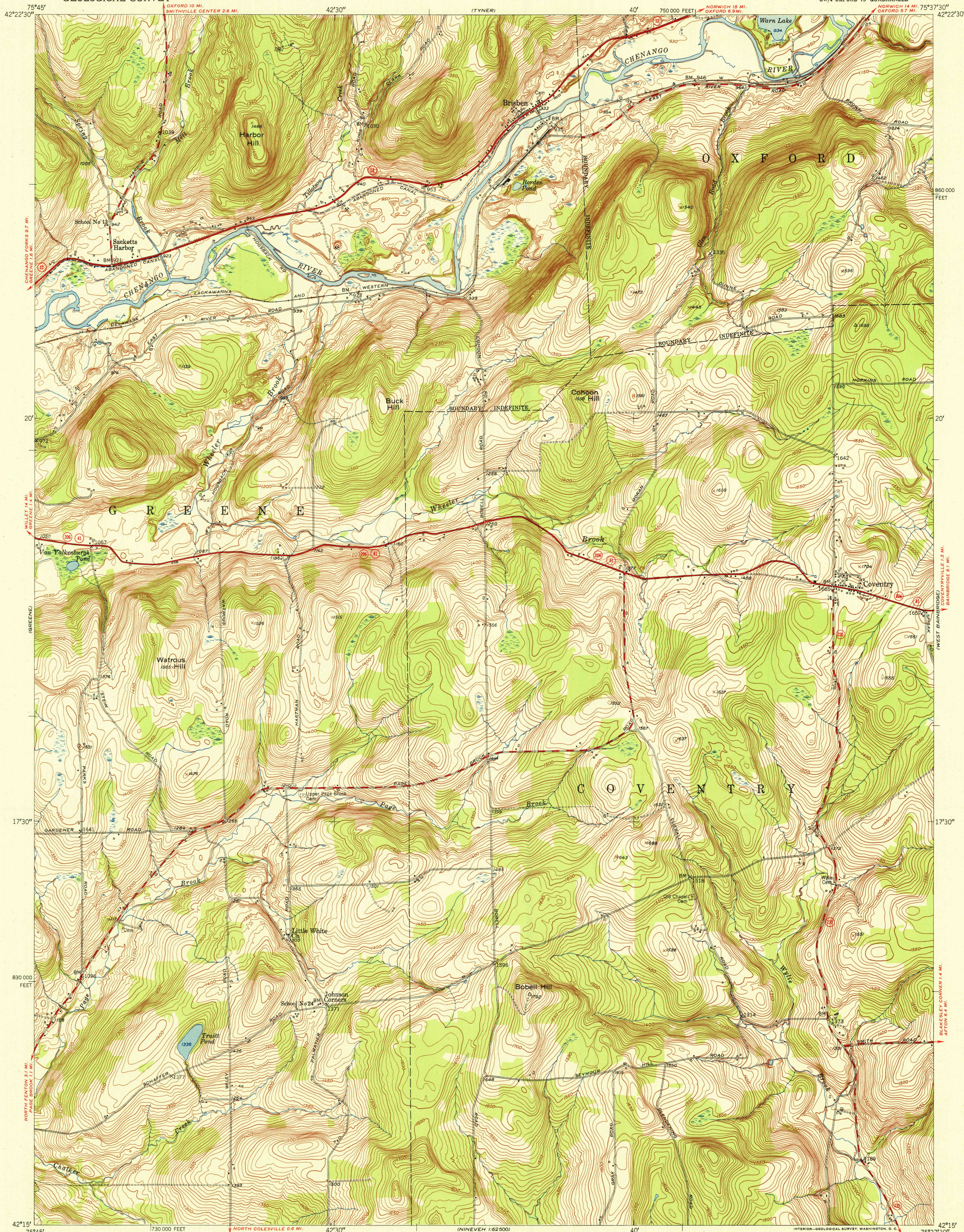


UNITED STATES
DEPARTMENT OF THE INTERIOR
GEOLOGICAL SURVEY

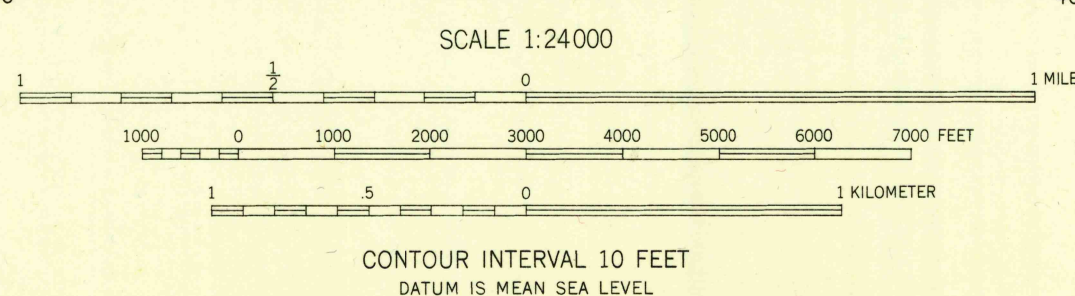
U. S. G. S.
FILE COPY
Inspection and Editing.

BRISBEN QUADRANGLE
NEW YORK-CHENANGO CO.
7.5 MINUTE SERIES (TOPOGRAPHIC)
SW/4 OXFORD 15' QUADRANGLE



Maped, edited, and published by the Geological Survey
Control by USGS and USC&GS
Topography from aerial photographs by multiplex methods
Aerial photographs taken 1944. Field check 1949
Polyconic projection. 1927 North American datum
10,000-foot grid based on New York coordinate system,
central zone

11°
TRUE NORTH
MAGNETIC NORTH
APPROXIMATE MEAN
DECLINATION, 1949



USGS
Historical File
Topographic Division

ROAD CLASSIFICATION
Heavy-duty... 4 LANE LANE Light duty...
Medium-duty... 4 LANE LANE Unimproved dirt...
U. S. Route State Route

BRISBEN, N. Y.
SW/4 OXFORD 15' QUADRANGLE
N4215-W7537.5/7.5
EDITION OF 1951

THIS MAP COMPLIES WITH NATIONAL MAP ACCURACY STANDARDS
FOR SALE BY U. S. GEOLOGICAL SURVEY, WASHINGTON 25, D. C.
A FOLDER DESCRIBING TOPOGRAPHIC MAPS AND SYMBOLS IS AVAILABLE ON REQUEST

U. S. G. S.
FILE COPY
Inspection and Editing.