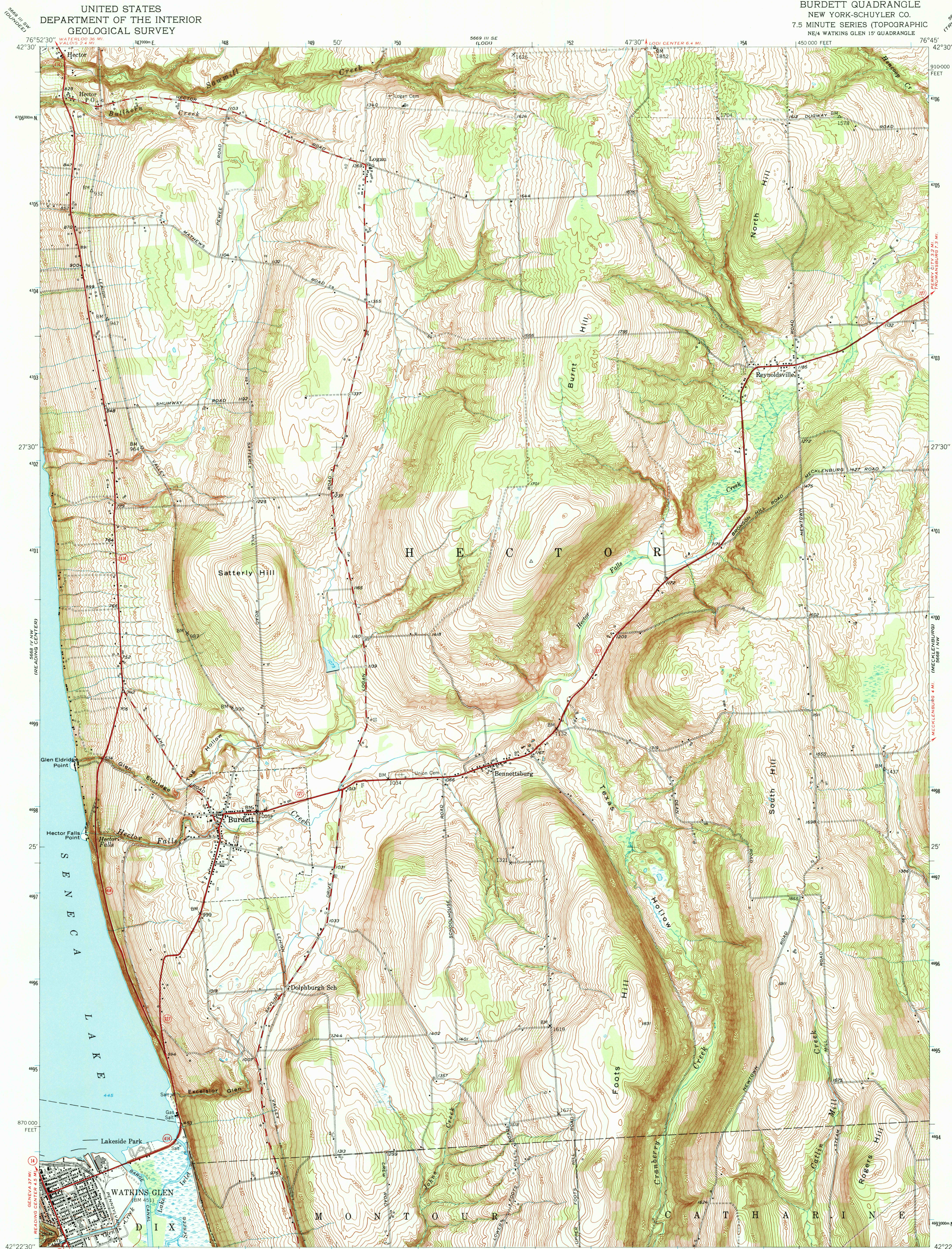


UNITED STATES
DEPARTMENT OF THE INTERIOR
GEOLOGICAL SURVEY

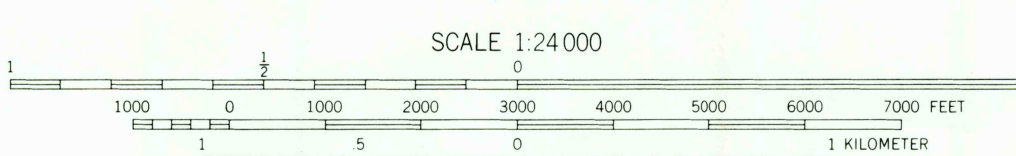
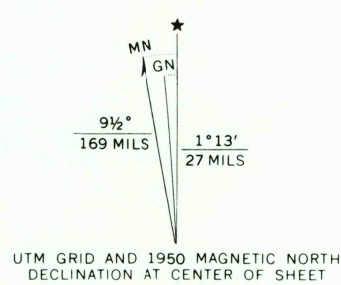
BURDETT QUADRANGLE
NEW YORK-SCHUYLER CO.
7.5 MINUTE SERIES (TOPOGRAPHIC)
NE/4 WATKINS GLEN 15' QUADRANGLE



Maped, edited, and published by the Geological Survey
Control by USGS and USC&GS

Topography from aerial photographs by multiplex methods
Aerial photographs taken 1944. Field check 1950
Polyconic projection. 1927 North American datum
10,000-foot grid based on New York coordinate system,
central zone
1000 meter Universal Transverse Mercator grid ticks,
zone 18, shown in blue

Map photospected 1976
No major culture or drainage changes observed



CONTOUR INTERVAL 10 FEET
DATUM IS MEAN SEA LEVEL

THIS MAP COMPLIES WITH NATIONAL MAP ACCURACY STANDARDS
FOR SALE BY U. S. GEOLOGICAL SURVEY
DENVER, COLORADO 80225, OR RESTON, VIRGINIA 22092
A FOLDER DESCRIBING TOPOGRAPHIC MAPS AND SYMBOLS IS AVAILABLE ON REQUEST

ROAD CLASSIFICATION
Heavy-duty ——— Light-duty ———
Medium-duty ——— Unimproved dirt ———
State Route



BURDETT, N. Y.
NE/4 WATKINS GLEN 15' QUADRANGLE
N4222.5-W7645/7.5

1950
PHOTOINSPECTED 1976
AMS 5668 IV NE-SERIES V821

