

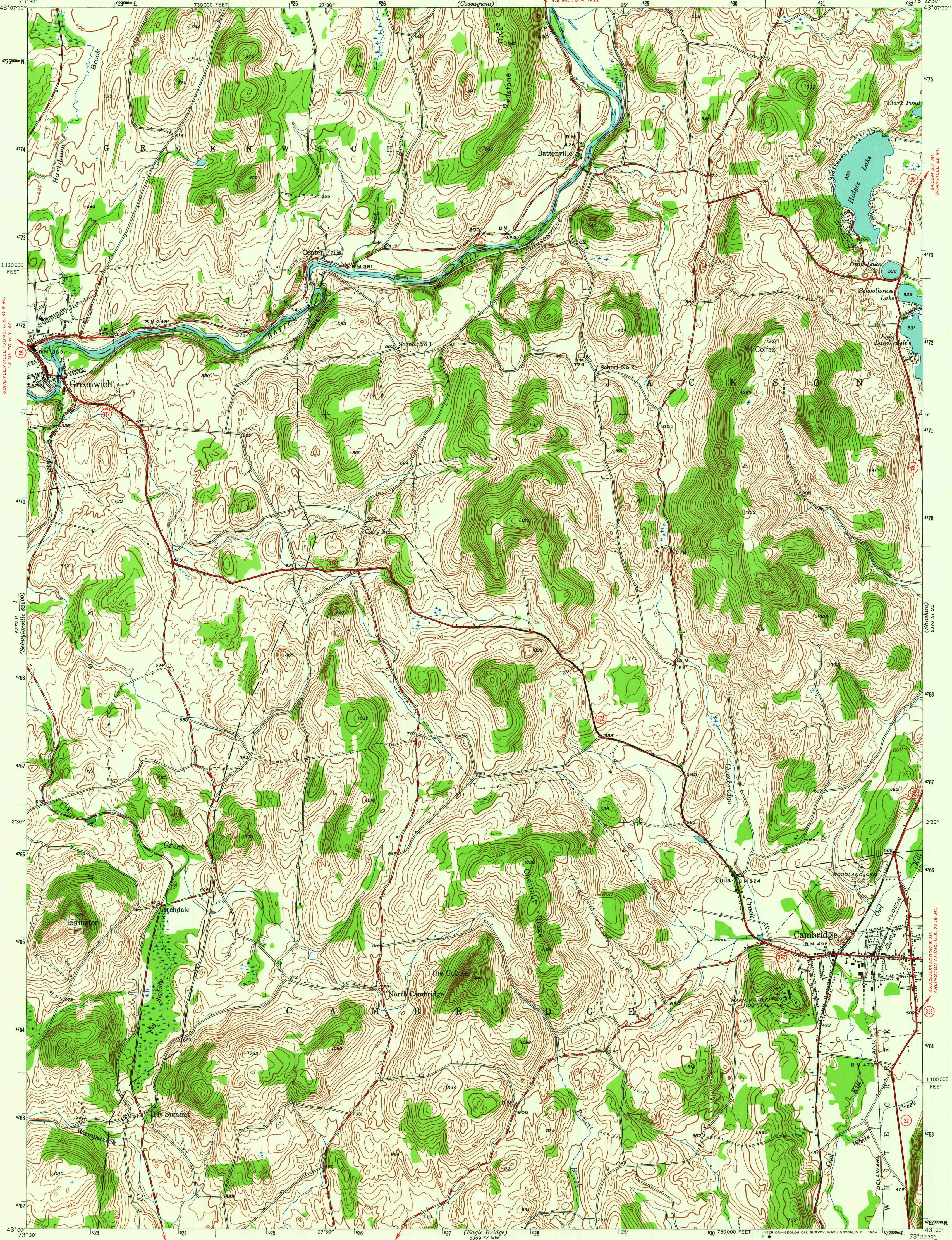
(Schuylerville)  
6370 II  
122500

UNITED STATES  
DEPARTMENT OF THE INTERIOR  
GEOLOGICAL SURVEY

UNITED STATES  
DEPARTMENT OF THE ARMY  
CORPS OF ENGINEERS

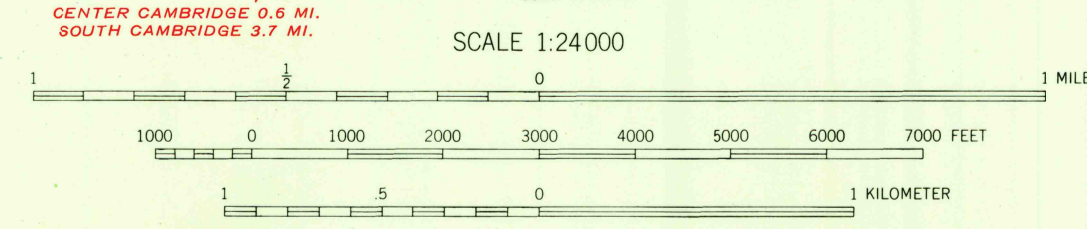
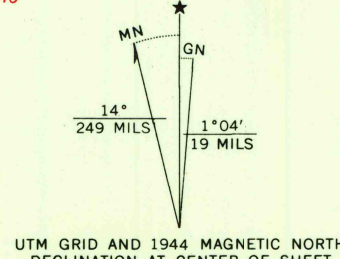
NEW YORK  
(WASHINGTON COUNTY)  
CAMBRIDGE QUADRANGLE  
7 1/2-MINUTE SERIES

6370 III NE  
6370 III SE  
6370 III SW  
6370 III NW



Mapped by the Geological Survey  
1944

**ROAD CLASSIFICATION**  
Heavy-duty ——— 4 LANE 16 LANE Light-duty ———  
Medium-duty ——— 4 LANE 16 LANE Unimproved dirt ———  
U.S. Route      State Route



Contour interval 20 feet  
Datum is mean sea level

FOR SALE BY U.S. GEOLOGICAL SURVEY, WASHINGTON 25, D. C.  
A FOLDER DESCRIBING TOPOGRAPHIC MAPS AND SYMBOLS IS AVAILABLE ON REQUEST

USCS  
Historical File  
Topographic Division

Polyconic projection. 1927 North American datum  
10000 foot grid based on New York (East)  
rectangular coordinate system  
1000-meter Universal Transverse Mercator grid ticks,  
zone 18, shown in blue  
3.6 MI. TO N.Y. 67  
HOOSICK FALLS 8.9 MI.

CAMBRIDGE, N. Y.

N 4300-W 7322.5/7.5

1944

AMS 6370 III SW-SERIES V821

OCT 20 1964