A.M.S. V821
First Edition (AMS 1), 1945.

Prepared under the direction of the Chief of Engineers by the Army Map Service (TV), U. S. Army, Washington, D. C. Compiled in 1945 by USGS and TVA from wide angle aerial photographs by stereophotogrammetric methods. Aerial photography for TVA, 1943 and 1944. Horizontal and vertical control by USCGS and TVA. Map field checked, 1945. This map complies with the national standard map accuracy requirements.

LEGEND	
ROAD DATA 1945	
Hard surface, heavy duty road, more than two lanes wide	Loose surface, graded, dry-weather road
Hard surface, heavy duty road, two lanes wide; Federal route marker	Trail; Dirt road
Secondary, hard surface, all-weather road, two lanes wide; State route marker	Railroad in street; Carline in street
RAILROADS	
Standard gauge	Single track Double track
Narrow gauge	Single track Double track
Single track carline	Double track carline
BOUNDARIES	
State	Triangulation station
County (with monument)	Bench mark
Town	Spot elevation
Reservation	Woods
Military reservation	Woods-brushwood
School; Church	Brushwood
Cemetery	Orchard
Churchyard	Vineyard
Intermittent lake	Intermittent stream
Dam	Rapids; Falls
Large rapids and falls	Swamp, marsh
Rocks awash at low tide	Wharf, pier
Man-made shoreline	

SCALE 1:24,000
1 000 500 0 1000 2000 Meters
1 000 500 0 1000 2000 Yards

CONTOUR INTERVAL 20 FEET
DATUM IS MEAN SEA LEVEL

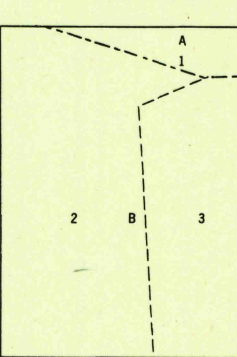
POLYCONIC PROJECTION
1927 NORTH AMERICAN DATUM

ONE THOUSAND YARD U.S. POLYCONIC GRID, ZONE A
THE LAST THREE DIGITS OF THE GRID NUMBERS ARE OMITTED

REPRINTED FROM MILITARY EDITION FOR CIVIL USE
PENDING REVISION FOR STANDARD ISSUE
SOLD AND DISTRIBUTED BY U. S. GEOLOGICAL SURVEY, WASHINGTON 25, D. C.

APPROXIMATE MEAN DECLINATION 1946
FOR CENTER OF SHEET
NO ANNUAL MAGNETIC CHANGE
Use diagram only to obtain numerical values. To determine magnetic north line, connect the point "P" on the south edge of the map with the value of the angle between GRID NORTH and MAGNETIC NORTH, as plotted on the degree scale of the north edge of the map.

INDEX TO BOUNDARIES



INDEX TO ADJOINING SHEETS

Sheet	Longitude	Latitude
6070 I NE	74°45'	43°15'
6070 II NE	74°45'	43°10'
6070 III NE	74°45'	43°05'
6070 IV NE	74°45'	43°00'
6070 V NE	74°45'	42°55'
6070 VI NE	74°45'	42°50'
6070 VII NE	74°45'	42°45'
6070 VIII NE	74°45'	42°40'
6070 IX NE	74°45'	42°35'
6070 X NE	74°45'	42°30'

CANADA LAKE, NEW YORK
N4307.5-W7430/7.5

JAN 8 1945

U.S.G.S.
FILE COPY
Inspection and Editing.U.S.G.S.
FILE COPY
Inspection and Editing.U.S.G.S.
FILE COPY
Inspection and Editing.