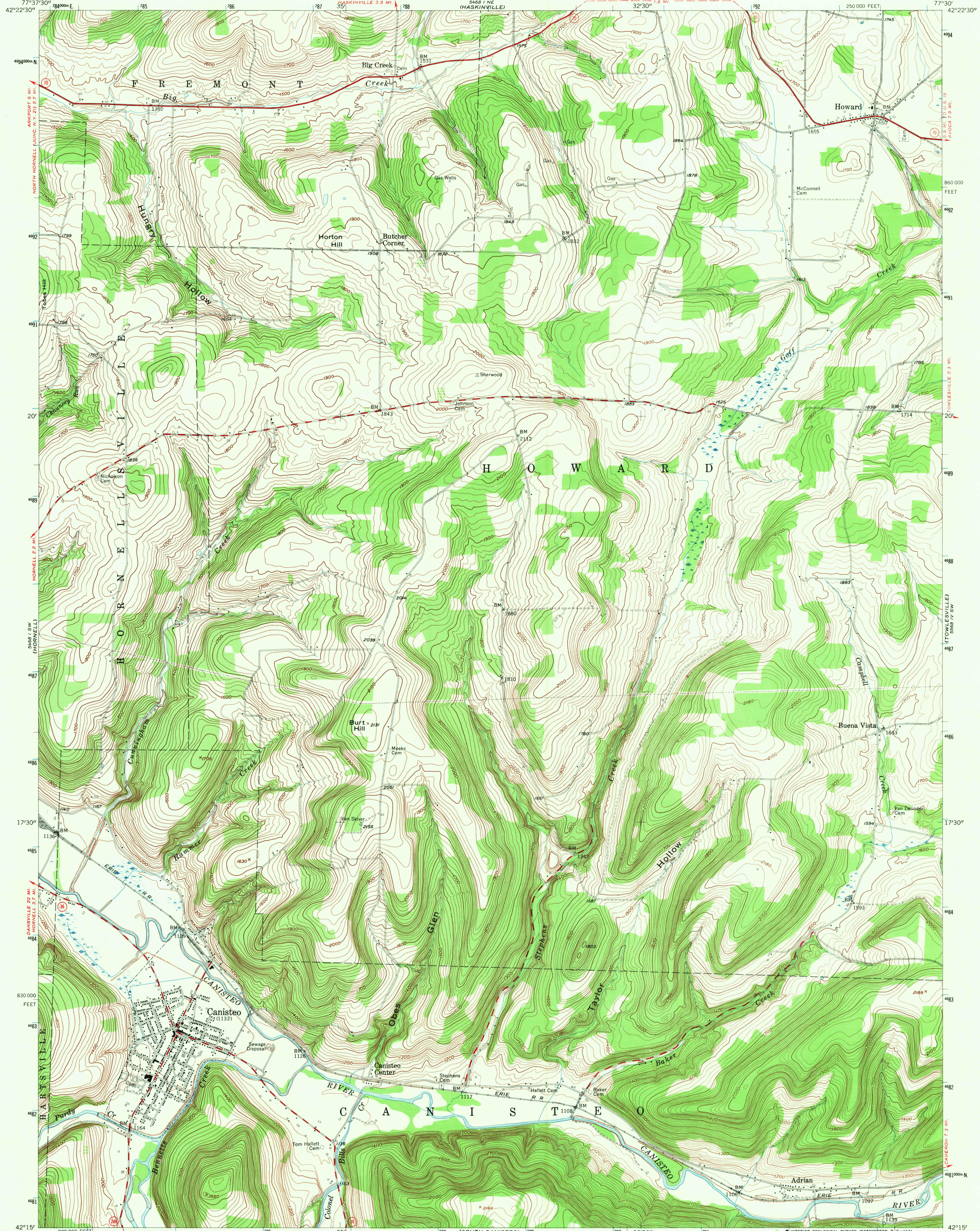


UNITED STATES
DEPARTMENT OF THE INTERIOR
GEOLOGICAL SURVEY

CANISTEO QUADRANGLE
NEW YORK—STEBEN CO.
7.5 MINUTE SERIES (TOPOGRAPHIC)
SE/4 HORNELL 15' QUADRANGLE



Mapped, edited, and published by the Geological Survey

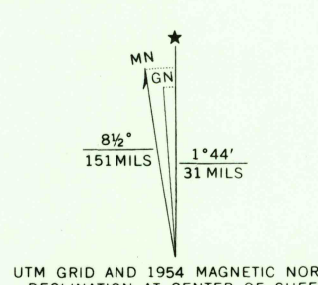
Control by USGS and USC&GS

Topography from aerial photographs by multiplex methods

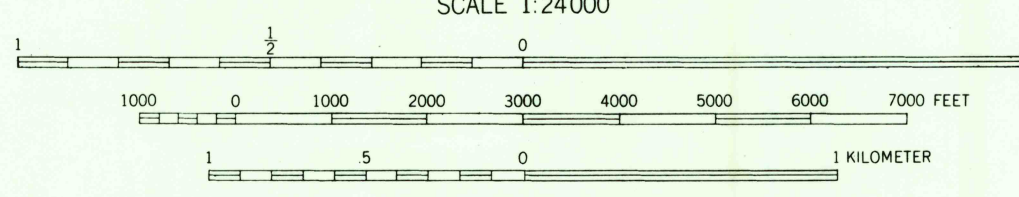
Aerial photographs taken 1952. Field check 1954

Polyconic projection. 1927 North American datum
10,000-foot grid based on New York coordinate system,
central zone

Unchecked elevations are shown in brown
1000-meter Universal Transverse Mercator grid ticks,
zone 18, shown in blue



SCALE 1:24000



CONTOUR INTERVAL 20 FEET

DATUM IS MEAN SEA LEVEL

THIS MAP COMPLIES WITH NATIONAL MAP ACCURACY STANDARDS
FOR SALE BY U. S. GEOLOGICAL SURVEY, WASHINGTON, D. C. 20242
A FOLDER DESCRIBING TOPOGRAPHIC MAPS AND SYMBOLS IS AVAILABLE ON REQUEST

USGS
Historical File
Topographic Division



U.S.G.S.

FILE COPY
TOPOGRAPHIC DIVISION
HISTORICAL

CANISTEO, N. Y.

SE/4 HORNELL 15' QUADRANGLE
N 4215-W 7730/7.5

1954

AMS 5468 I SE-SERIES V821

JUL 14 1971