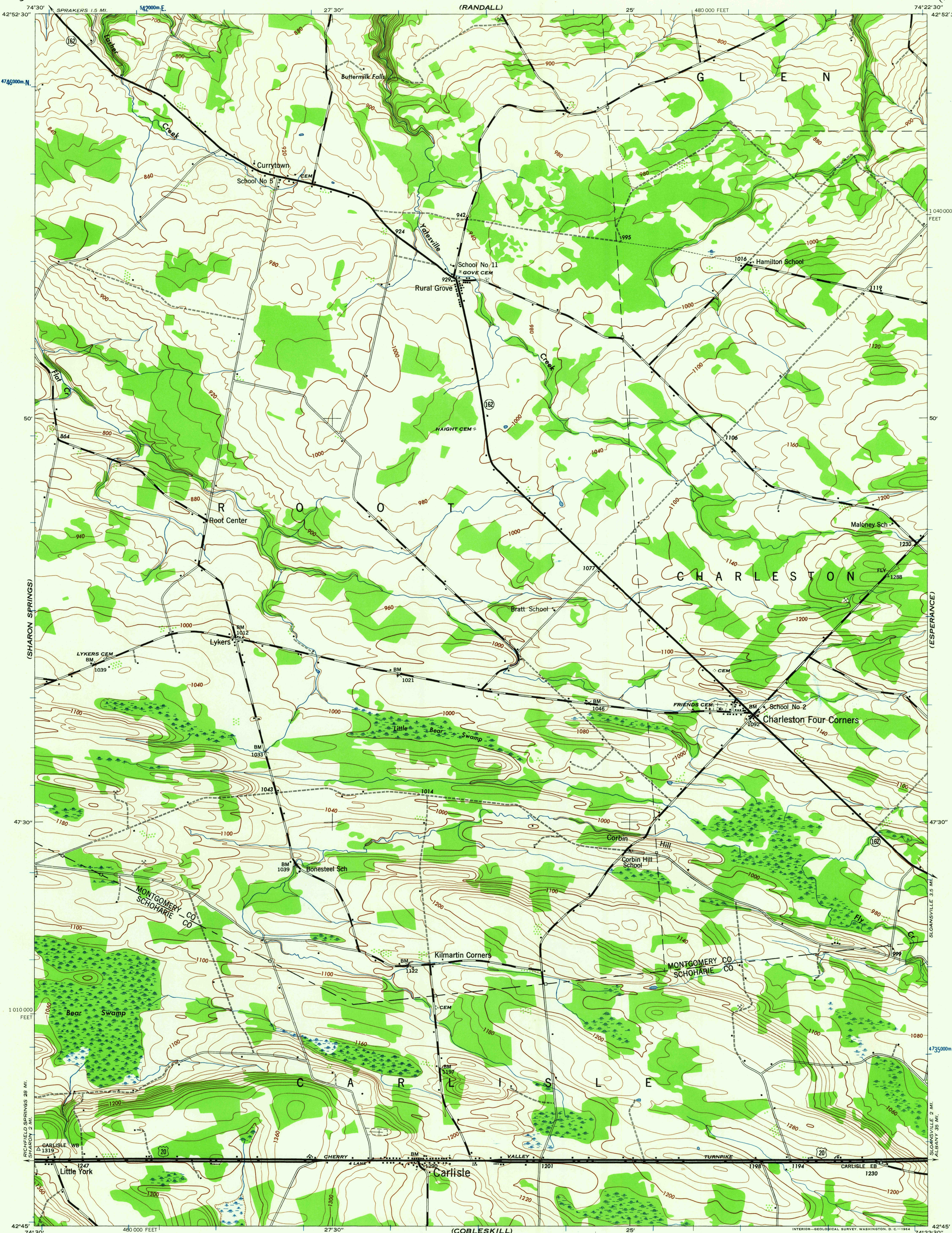


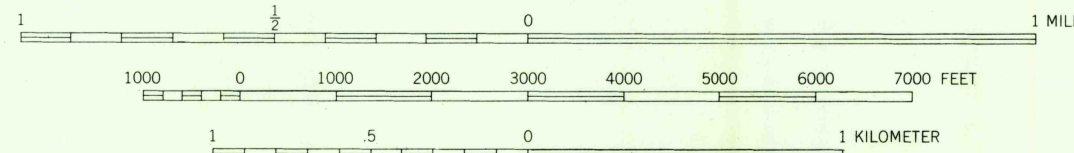
NEW YORK

WAR DEPARTMENT
CORPS OF ENGINEERS, U.S. ARMYCARLISLE QUADRANGLE
7½-MINUTE SERIES

Mapped by Tennessee Valley Authority under direction of the
Chief of Engineers, U. S. Army, 1943.
Control by USCGS and TVA.
Topography by U. S. Geological Survey and Tennessee Valley Authority
by Stereophotogrammetric methods (Multiplex).
Field completion surveys by TVA.
Wide-angle photography for TVA, 1942.
Polyconic projection, 1927 North American datum

ROAD CLASSIFICATION
1943
Dependable hard-surface,
heavy-duty road. ——— U. S. Route 20
Loose-surface graded,
dry weather road. ——— State Route 7
Secondary, hard-surface,
all-weather road. ——— Dirt road. ———
More than two lanes indicated by note along road with tick at point of change.
This map complies with the national standard map accuracy requirements.

SCALE 1:24,000

CONTOUR INTERVAL 20 FEET
DATUM IS MEAN SEA LEVEL

10 000-FOOT GRID TICKS NEW YORK PLANE COORDINATE SYSTEM EAST ZONE SHOWN IN BLACK
1000-METER GRID TICKS, UNIVERSAL TRANSVERSE MERCATOR SYSTEM, ZONE 18, SHOWN IN BLUE
REPRINTED FROM MILITARY EDITION FOR CIVIL USE
FOR SALE BY U. S. GEOLOGICAL SURVEY, WASHINGTON 25, D. C.
A FOLDER DESCRIBING TOPOGRAPHIC MAPS AND SYMBOLS IS AVAILABLE ON REQUEST

USGS
Historical File
Topographic Division

TRUE NORTH
MAGNETIC NORTH
APPROXIMATE MEAN
DECLINATION, 1943

CARLISLE, N. Y.
N 4245-W 7422.5/7.5

1943

APR 13 1954