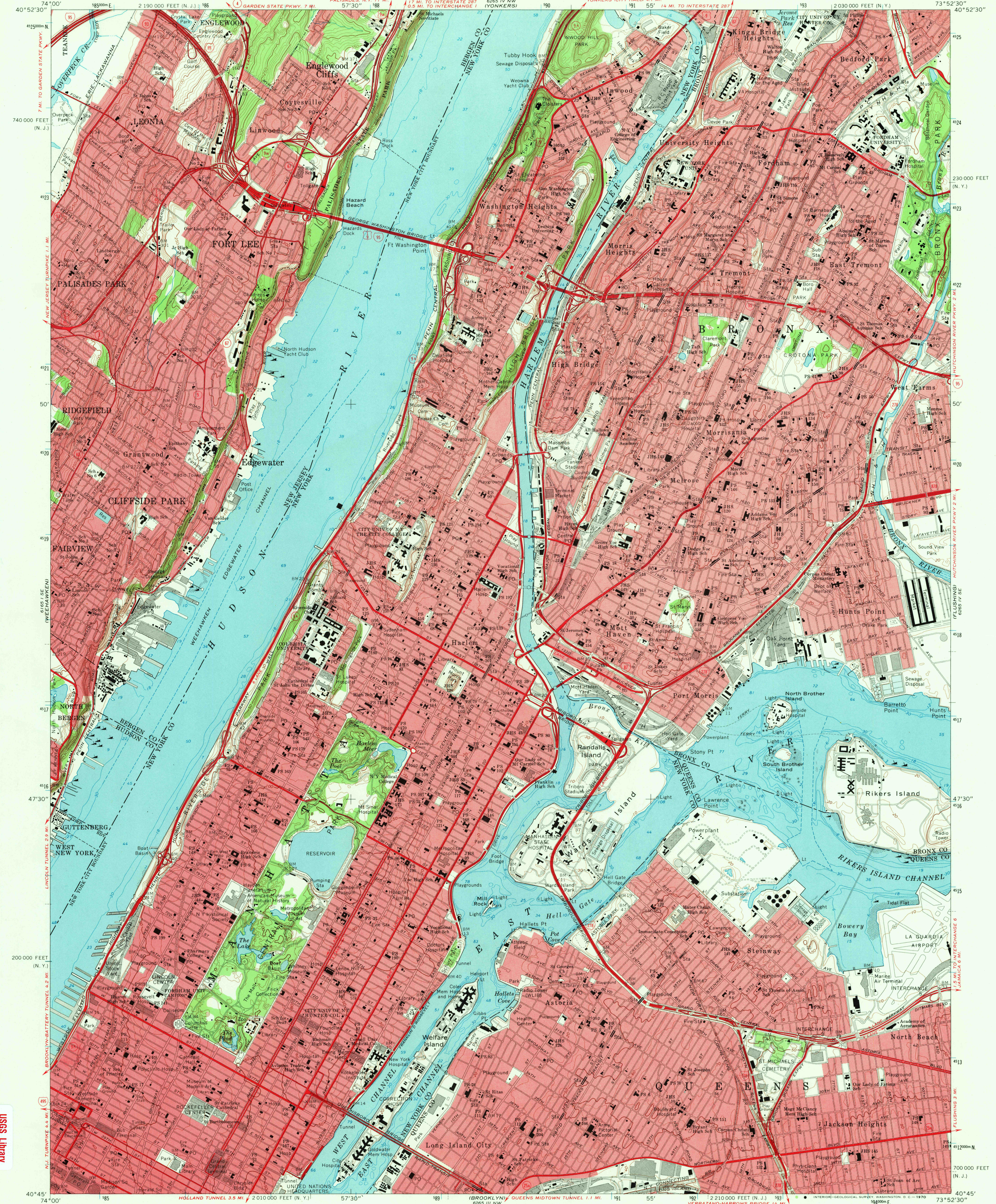
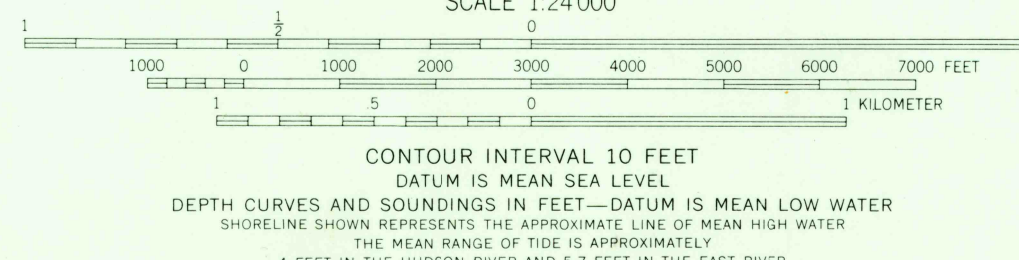
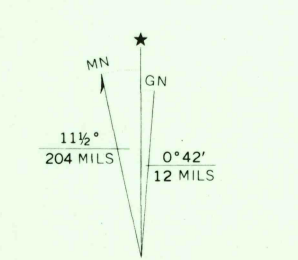


UNITED STATES
DEPARTMENT OF THE INTERIOR
GEOLOGICAL SURVEY

CENTRAL PARK QUADRANGLE
NEW YORK-NEW JERSEY
7.5 MINUTE SERIES (TOPOGRAPHIC)
SW/4 HARLEM 15 QUADRANGLE



Mapped, edited, and published by the Geological Survey
Revised in cooperation with New York
Department of Transportation
Control by USGS, USC&GS, and New Jersey Geodetic Survey
Planimetry by photogrammetric methods and from USC&GS Charts T-4567,
T-5089, T-5264, T-5278, T-5448, T-5449, T-5451, T-5452, T-5453, T-5458,
and T-5778. Topography by photogrammetric methods from aerial photographs
taken 1954 and planetarium surveys 1956
Revised from aerial photographs taken 1966. Field checked 1966
Selected hydrographic data compiled from USC&GS Charts 226, 744, 745,
746, and 747 (1966). This information is not intended for navigational purposes
Polyconic projection. 1927 North American datum
10,000-foot grids based on New York coordinate system, Long Island zone,
and New Jersey coordinate system
1000-meter Universal Transverse Mercator grid ticks, zone 18, shown in blue
Red tint indicates areas in which only landmark buildings are shown



USGS
Historical File
Topographic Division

ROAD CLASSIFICATION

Heavy-duty	Light-duty
Medium-duty	Unimproved dirt
Interstate Route	U.S. Route
	State Route

U.S.G.S.
FILE COPY
TOPOGRAPHIC DIVISION

CENTRAL PARK, N.Y.-N.J.
SW/4 HARLEM 15 QUADRANGLE
N4045-W7352.5/7.5
1966
AMS 6265 IV SW-SERIES V821

4055
JAN 23 1970