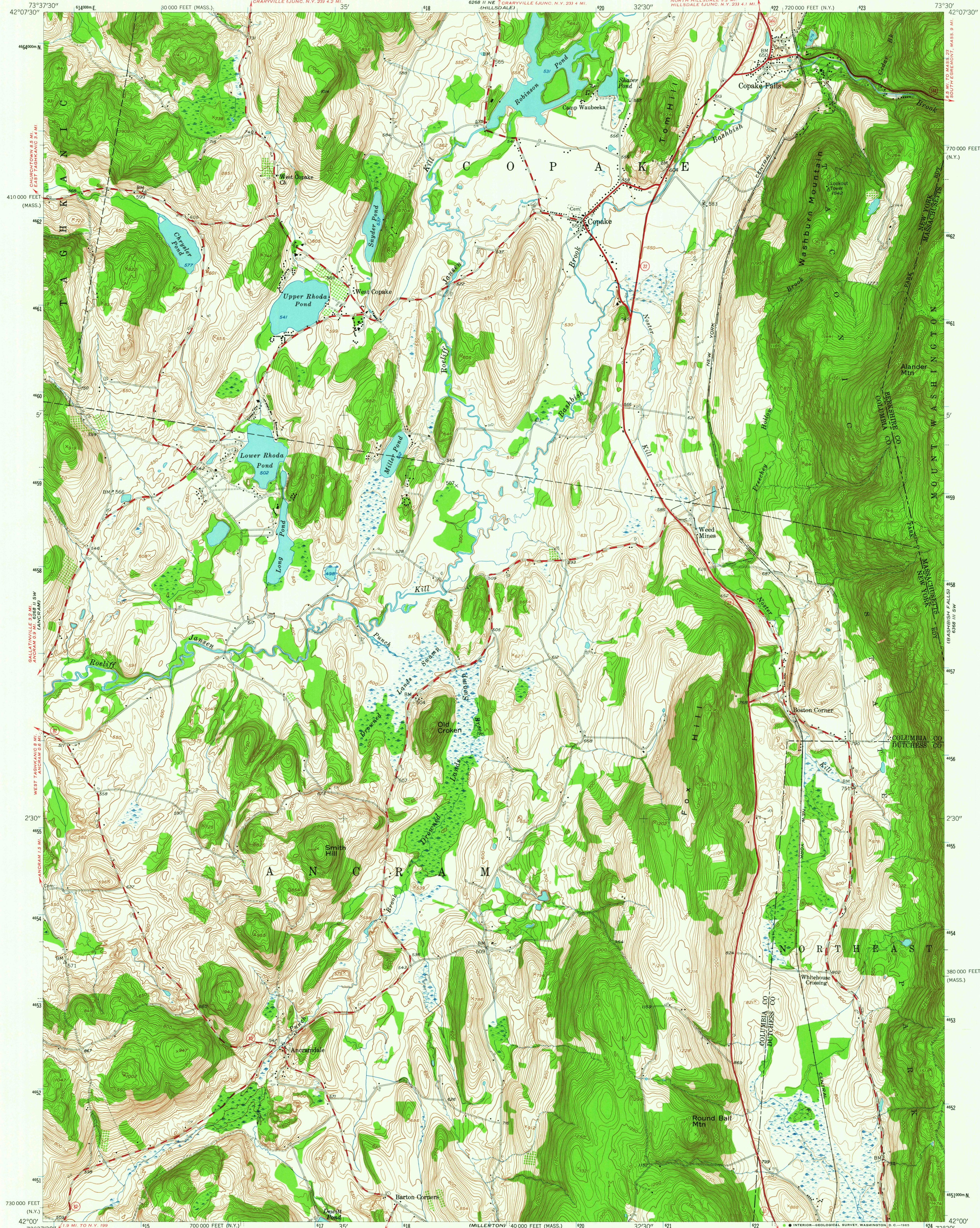


UNITED STATES
DEPARTMENT OF THE INTERIOR
GEOLOGICAL SURVEY

COPAKE QUADRANGLE
NEW YORK-MASSACHUSETTS
7.5 MINUTE SERIES (TOPOGRAPHIC)
SE/4 COPAKE 15' QUADRANGLE



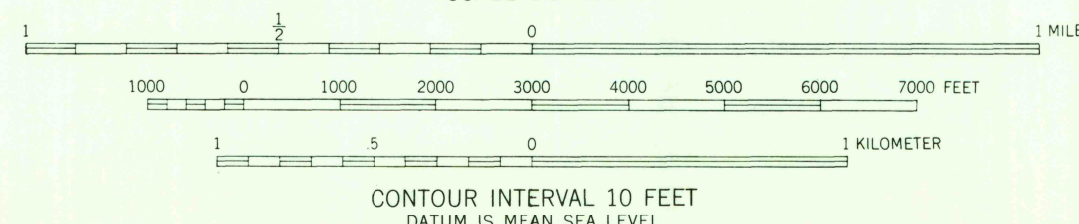
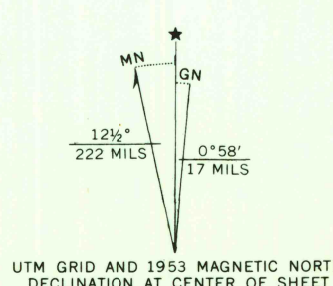
Mapped, edited, and published by the Geological Survey

Control by USGS and USCGS

Topography in Massachusetts by plane-table surveys 1946
Topography in New York from aerial photographs by multiplex methods
Aerial photographs taken 1949. Field check 1953

Polyconic projection. 1927 North American datum
10,000-foot grids based on New York coordinate system,
east zone, and Massachusetts (Mainland) coordinate system
1000-meter Universal Transverse Mercator grid ticks,
zone 18, shown in blue

State Park boundaries shown represent proposed
limits and not state ownership



THIS MAP COMPLIES WITH NATIONAL MAP ACCURACY STANDARDS
FOR SALE BY U.S. GEOLOGICAL SURVEY, WASHINGTON 25, D.C.
A FOLDER DESCRIBING TOPOGRAPHIC MAPS AND SYMBOLS IS AVAILABLE ON REQUEST

USGS
Historical File
Topographic Division



ROAD CLASSIFICATION
Heavy-duty ——— Light-duty ———
Medium-duty ——— Unimproved dirt ———
U.S. Route ——— State Route ———

COPAKE, N.Y.-MASS.
SE/4 COPAKE 15' QUADRANGLE
N4200-W7330/7.5

1953

AMS 6268 II SE-SERIES V821

U.S.G.S. 327
FILE COPY
TOPOGRAPHIC DIVISION

JAN 25 1965