

A.M.S. V821

Type F (AMS 1), 1946; Revised (AMS 2), 1946.

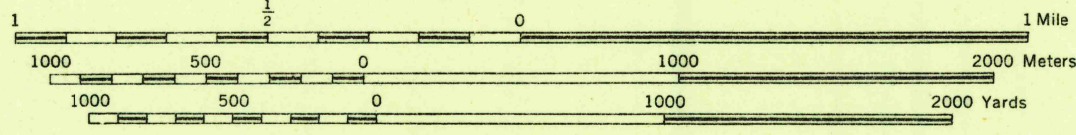
Prepared under the direction of the Chief of Engineers by the Army Map Service (AM), U.S. Army, Washington, D.C. Redrawn in 1946 from New York, 1:62,500, USGS, Schunemunk, 1935. Planimetric detail revised from aerial photography by photo-planimetric methods. Aerial photography by U.S. Army Air Force, 1946. Roads classified from County Maps prepared by Public Roads Administration, 1946. Approximate military reservation boundary taken from information furnished by OCE, 1944. Horizontal and vertical control by U.S. Geological Survey, U.S. Coast and Geodetic Survey, and Palisades Interstate Park Commission. Planimetry and road classification field checked by the United States Military Academy.

LEGEND

Tint indicates built-up areas in which only land mark buildings are shown.

ROAD DATA 1946	
Hard surface, heavy duty road, more than two lanes wide; Federal route marker	Loose surface, graded, all weather road
Hard surface, heavy duty road, two lanes wide; State route marker	Loose surface, dry weather, or dirt road
Hard surface, all weather road, two lanes wide	Trail
RAILROADS	
Normal gauge	Single track Double track
Narrow gauge	Single track Double track
BOUNDARIES	
Carline	Carline in street; Railroad in street
National	
State (with monument)	
County	
Town	
Corporate limit	
Reservation	
Military reservation	
School; Church	
Mine	
Lighthouse	Intermittent lake
Recreation	Intermittent stream; Dam
Horizontal Control Sta.	Swamp, marsh
Bench mark	Rapids; Falls
Spot elevation	Large rapids and falls
150	Rocks bare at low tide
20	Rocks awash at low tide
Woods or brushwood	Wharf, pier
Orchard	Man-made shoreline
Vineyard	

SCALE 1:24000



CONTOUR INTERVAL 20 FEET

DATUM IS MEAN SEA LEVEL

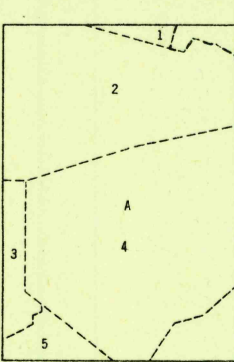
TRANSVERSE MERCATOR PROJECTION
1927 NORTH AMERICAN DATUM

HEIGHTS IN FEET

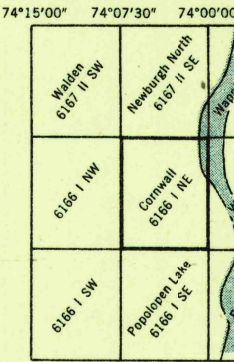
REPRINTED FROM MILITARY EDITION FOR CIVIL USE
PENDING REVISION FOR STANDARD ISSUE
SOLD AND DISTRIBUTED BY U. S. GEOLOGICAL SURVEY, WASHINGTON 25, D. C.

U. S. HIGHWAY NO. 8, 3.5 MI.
CENTRAL VALLEY 3.5 MI.ARMY MAP SERVICE, U. S. ARMY, WASHINGTON, D. C. 600034
1947

INDEX TO BOUNDARIES



INDEX TO ADJOINING SHEETS



A. Orange County
1. Newburgh Town
2. New Windsor Town
3. Blooming Grove Town
4. Cornwall Town
5. Woodbury Town
6. Highland Town
7. Newburgh City (incorporated)
8. Dutchess County

Sheet 6166 I NE falls within NK 18.8,
AMS V801, 1:250,00012°
TRUE NORTH
MAGNETIC NORTH
APPROXIMATE MEAN
DECLINATION**HISTORICAL FILES**
(DO NOT REMOVE)CORNWALL, NEW YORK
N4122.5-W7400.7.5