

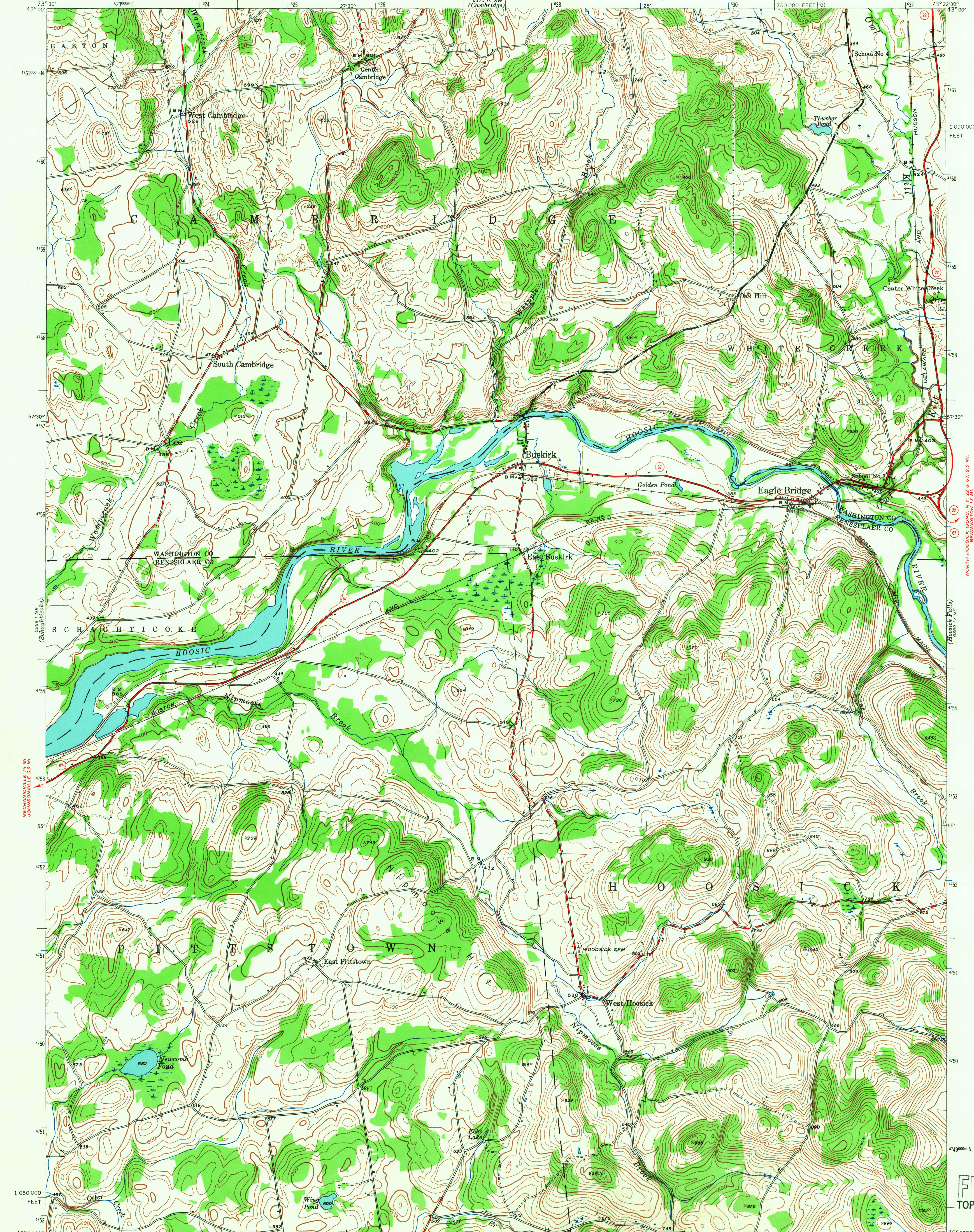
(Schuyler)  
689 1  
68900

UNITED STATES  
DEPARTMENT OF THE INTERIOR  
GEOLOGICAL SURVEY

UNITED STATES  
DEPARTMENT OF THE ARMY  
CORPS OF ENGINEERS

NEW YORK  
EAGLE BRIDGE QUADRANGLE  
7 1/2-MINUTE SERIES

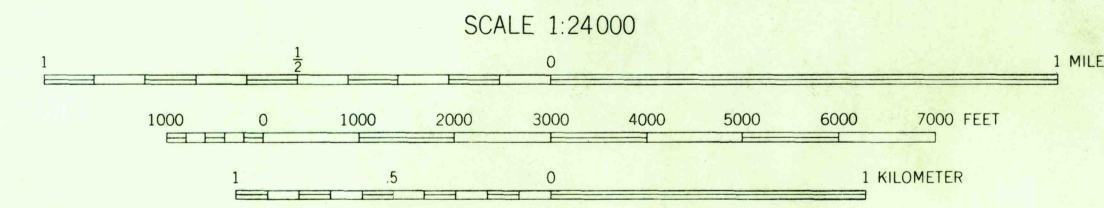
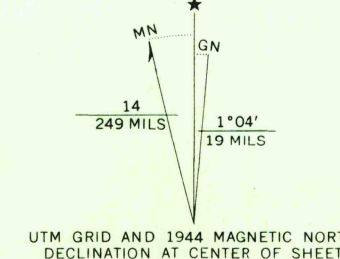
GRANVILLE 31 MI.  
CAMBRIDGE 2 MI.  
689 11.56  
(Sharon)



MECHANVILLE 10 MI.  
JOHNSVILLE 10 MI.

(Tombston)  
689 1  
68900

Mapped by the Geological Survey  
1944



CONTOUR INTERVAL 20 FEET  
DATUM IS MEAN SEA LEVEL

USGS  
Historical File  
Topographic Division

ROAD CLASSIFICATION  
Heavy-duty ——— Light-duty ———  
Medium-duty ——— Unimproved dirt ———  
State Route

Polyconic projection. 1927 North American datum  
10,000-foot grid based on New York (East)  
rectangular coordinate system  
1000-meter Universal Transverse Mercator grid ticks,  
zone 18, shown in blue

EAGLE BRIDGE, N. Y.  
N 4252.5—W 7322.5/7.5

1944

AMS 6369 IV NW—SERIES V821

FOR SALE BY U.S. GEOLOGICAL SURVEY, WASHINGTON, D. C. 20242  
A FOLDER DESCRIBING TOPOGRAPHIC MAPS AND SYMBOLS IS AVAILABLE ON REQUEST

U.S.G.S.  
FILE COPY  
TOPOGRAPHIC DIVISION

3210