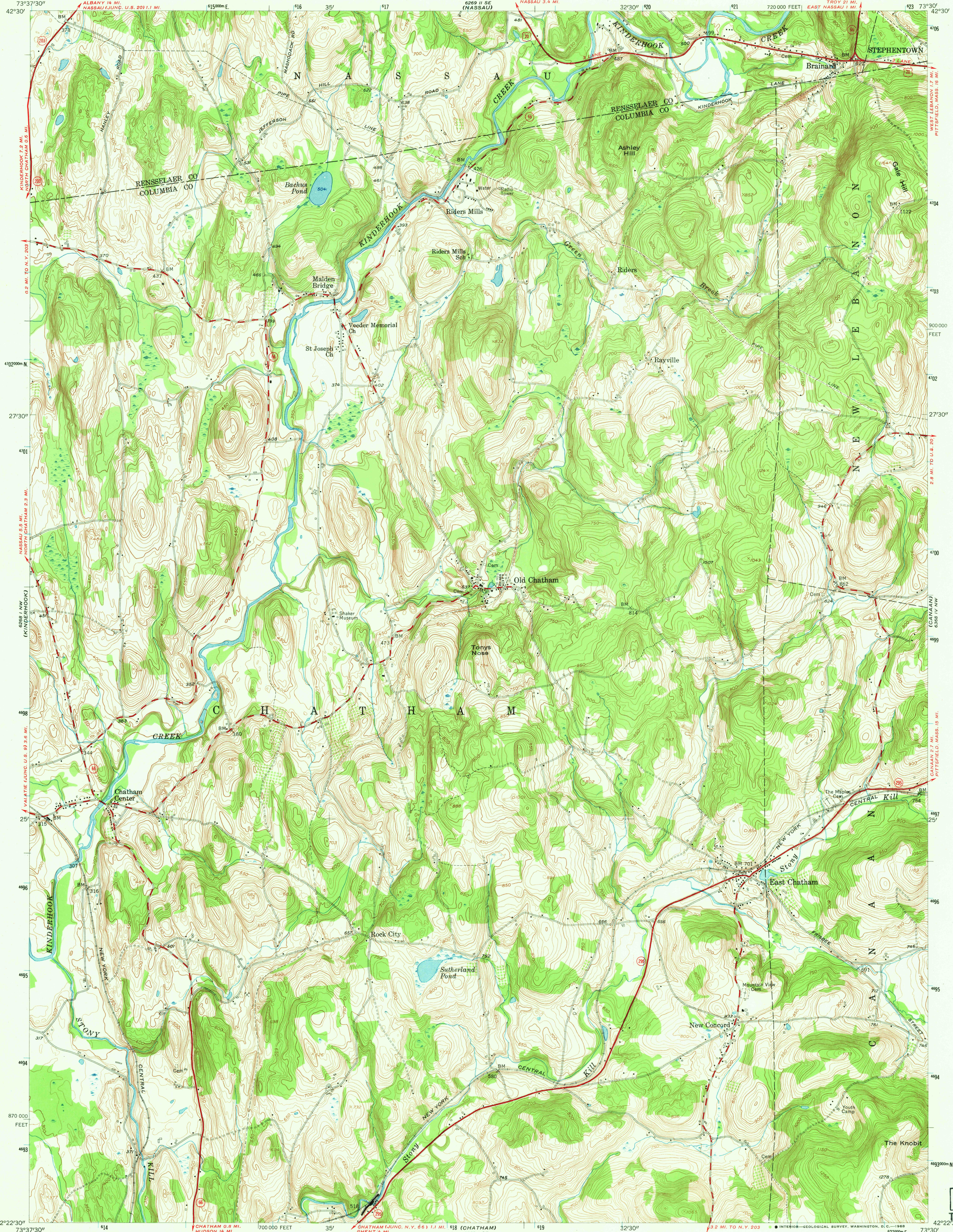
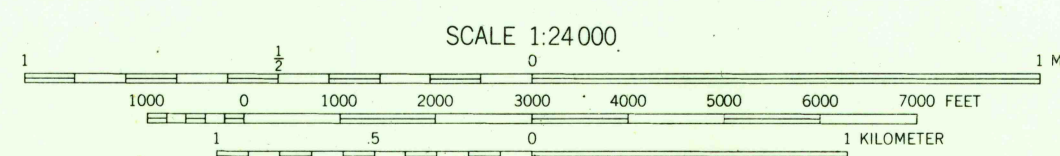
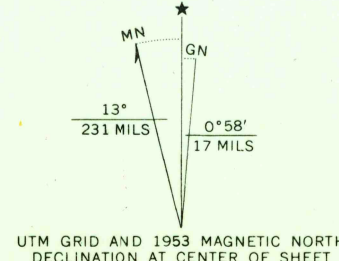


UNITED STATES  
DEPARTMENT OF THE INTERIOR  
GEOLOGICAL SURVEY

EAST CHATHAM QUADRANGLE  
NEW YORK  
7.5 MINUTE SERIES (TOPOGRAPHIC)  
NE/4 KINDERHOOK 15' QUADRANGLE



Mapped, edited, and published by the Geological Survey  
Control by USGS and USC&GS  
Topography from aerial photographs by Kelsh plotter  
Aerial photographs taken 1952. Field check 1953  
Polyconic projection. 1927 North American datum  
10,000-foot grid based on New York coordinate system,  
east zone  
1000-meter Universal Transverse Mercator grid ticks,  
zone 18, shown in blue



CONTOUR INTERVAL 10 FEET  
DATUM IS MEAN SEA LEVEL

THIS MAP COMPLIES WITH NATIONAL MAP ACCURACY STANDARDS  
FOR SALE BY U.S. GEOLOGICAL SURVEY, WASHINGTON, D.C. 20242  
A FOLDER DESCRIBING TOPOGRAPHIC MAPS AND SYMBOLS IS AVAILABLE ON REQUEST

USGS  
Historical File  
Topographic Division



ROAD CLASSIFICATION  
Heavy-duty ——— Light-duty ———  
Medium-duty ——— Unimproved dirt ———  
U.S. Route ——— State Route ———

EAST CHATHAM, N. Y.  
NE/4 KINDERHOOK 15' QUADRANGLE  
N 4222.5—W 7330/7.5

1953

AMS 6268 1 NE—SERIES V821

U.S.G.S.  
FILE COPY  
TOPOGRAPHIC DIVISION

FEB 20 1969

2660