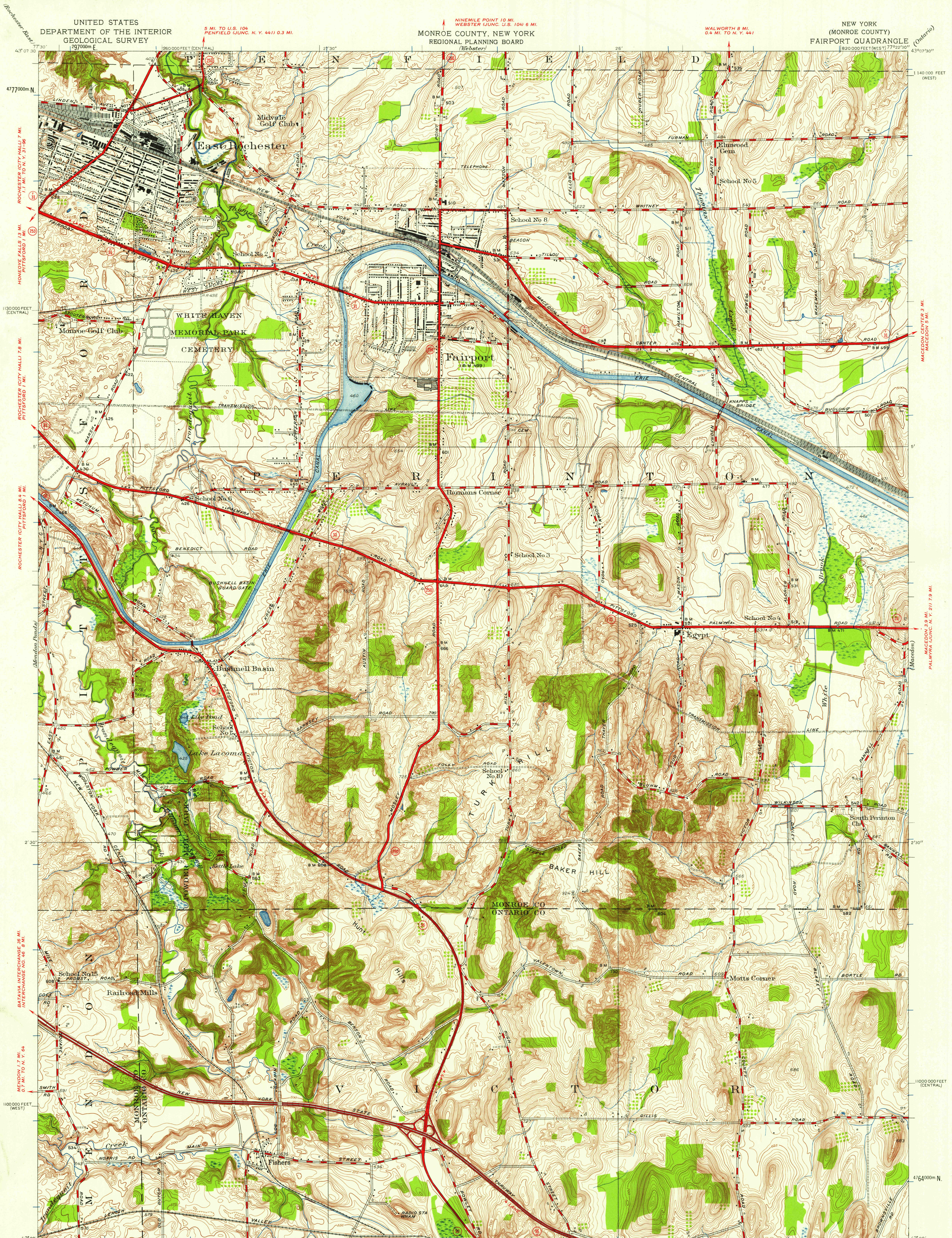


UNITED STATES
DEPARTMENT OF THE INTERIOR
GEOLOGICAL SURVEY

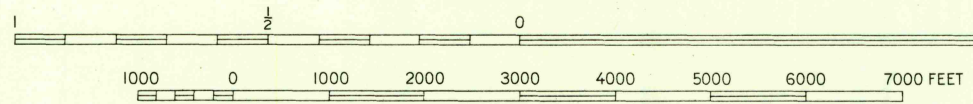
MONROE COUNTY, NEW YORK
REGIONAL PLANNING BOARD
(Webster)

NEW YORK
(MONROE COUNTY)
FAIRPORT QUADRANGLE



Topography by R.H. Runyan
Culture and drainage in part compiled from aerial photographs
Control by U.S. Geological Survey and U.S. Coast and Geodetic Survey
and U.S. Lake Survey
Surveyed in 1932. Revised in 1952

SCALE 1:24,000



CONTOUR INTERVAL 5 FEET
DATUM IS MEAN SEA LEVEL

FOR SALE BY U. S. GEOLOGICAL SURVEY, WASHINGTON 25, D. C.
A FOLDER DESCRIBING TOPOGRAPHIC MAPS AND SYMBOLS IS AVAILABLE ON REQUEST

ROAD CLASSIFICATION

Heavy-duty ——— Light-duty ———
Medium-duty ——— Unimproved dirt ———
U. S. Route ——— State Route ———

FAIRPORT, N. Y.
N4300-W7722.5/7.5
1952

U.S.G.S.
FILE COPY
TOPOGRAPHIC DIVISION

3385
4-25-58