

UNITED STATES
DEPARTMENT OF THE INTERIOR
GEOLOGICAL SURVEY

FARNHAM QUADRANGLE
NEW YORK

7.5 MINUTE SERIES (TOPOGRAPHIC)
SE 1/4 SILVER CREEK 15' QUADRANGLE
N 4230-W 7900/7.5

79°07'30" E
42°37'30" N

4720000m N

35'

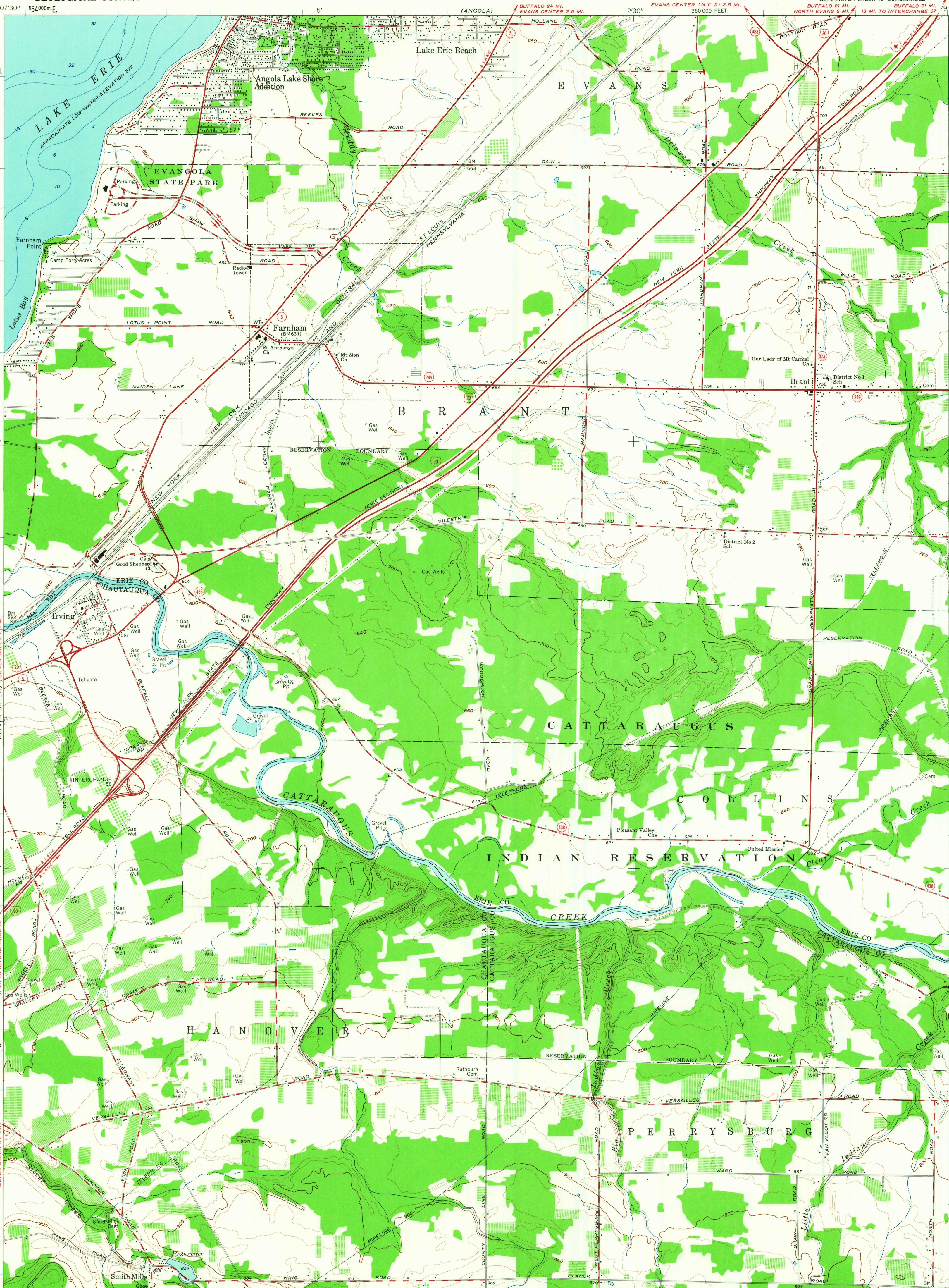
32°30"

920 000
FEET

42°30'

79°07'30"

FORESTVILLE



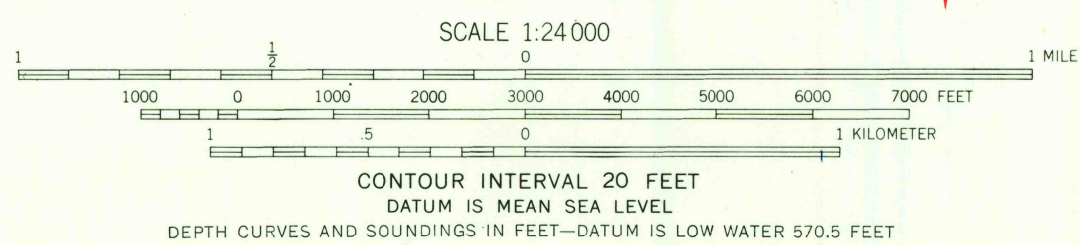
Mapped by the Army Map Service
Edited and published by the Geological Survey
Control by USGS, USC&GS, and USCE

Topography by photogrammetric methods from aerial
photographs taken 1942. Field checked 1943
Planimetry revised by the Geological Survey 1960

Selected hydrographic data compiled from U. S. Lake Survey Chart 32
(1959). This information is not intended for navigational purposes

Polyconic projection. 1927 North American datum
10,000-foot grid based on New York coordinate system, west zone
1000-meter Universal Transverse Mercator grid ticks,
zone 17, shown in blue

TRUE NORTH
MAGNETIC NORTH
APPROXIMATE MEAN
DECLINATION, 1960



THIS MAP COMPLIES WITH NATIONAL MAP ACCURACY STANDARDS
FOR SALE BY U. S. GEOLOGICAL SURVEY, WASHINGTON 25, D. C.
A FOLDER DESCRIBING TOPOGRAPHIC MAPS AND SYMBOLS IS AVAILABLE ON REQUEST

USGS
Historical File
Topographic Division



ROAD CLASSIFICATION
Heavy-duty ——— Light-duty ———
Medium-duty ——— Unimproved dirt ———
Interstate Route — U.S. Route — State Route —

FARNHAM, N. Y.
SE 1/4 SILVER CREEK 15' QUADRANGLE
N 4230-W 7900/7.5

1960

SEP 6 1963

2675

USGS
FILE COPY
TOPOGRAPHIC DIVISION