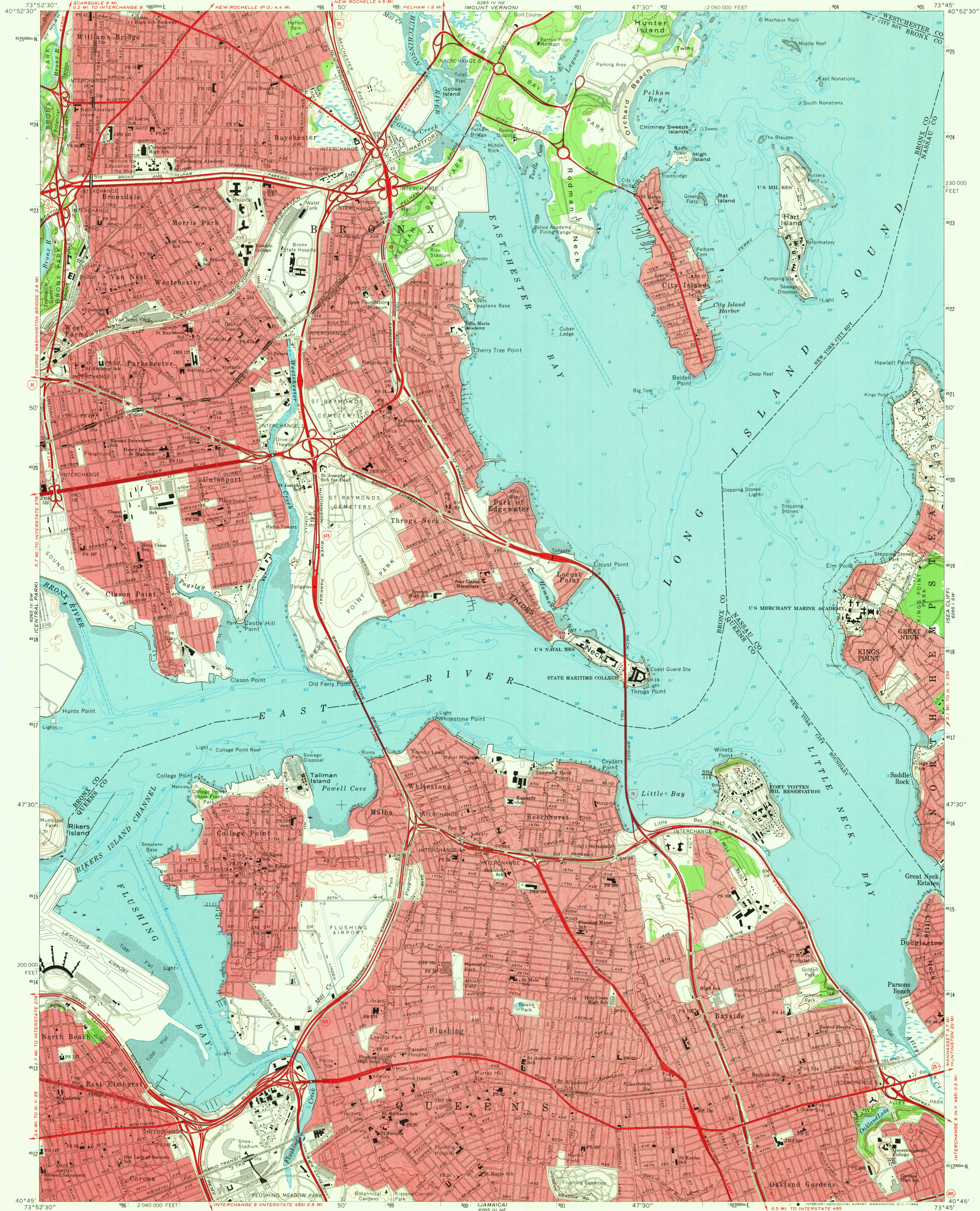
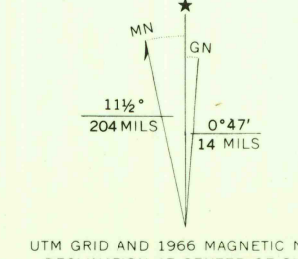


UNITED STATES  
DEPARTMENT OF THE INTERIOR  
GEOLOGICAL SURVEY

FLUSHING QUADRANGLE  
NEW YORK  
7.5 MINUTE SERIES (TOPOGRAPHIC)  
SE/4 HARLEM 15 QUADRANGLE



Mapped, edited, and published by the Geological Survey  
Revised in cooperation with New York Department  
of Transportation  
Control by USGS, USCGS, and Nassau County  
Planimetry compiled from USGS Charts T-5089, T-5090,  
T-5264, and T-5778. Topography by photogrammetric methods  
from aerial photographs taken 1954. Field checked 1955.  
Revised 1966  
Selected hydrographic data compiled from USGS Charts  
223 (1967) and 226 (1967). This information is not intended  
for navigational purposes  
Polyconic projection. 1927 North American datum  
10,000-foot grid based on New York coordinate system,  
Long Island zone  
1000-meter Universal Transverse Mercator grid ticks,  
zone 18, shown in blue  
Red tint indicates areas in which only landmark buildings are shown



SCALE 1:24,000  
CONTOUR INTERVAL 10 FEET  
DATUM IS MEAN SEA LEVEL  
DEPTH CURVES AND SOUNDINGS IN FEET—DATUM IS MEAN LOW WATER  
SHORELINE SHOWN REPRESENTS THE APPROXIMATE LINE OF MEAN HIGH WATER  
THE MEAN RANGE OF TIDE IS APPROXIMATELY 7 FEET  
THIS MAP COMPLIES WITH NATIONAL MAP ACCURACY STANDARDS  
FOR SALE BY U. S. GEOLOGICAL SURVEY, WASHINGTON, D. C. 20242  
A FOLDER DESCRIBING TOPOGRAPHIC MAPS AND SYMBOLS IS AVAILABLE ON REQUEST

USGS  
Historical File  
Topographic Division

ROAD CLASSIFICATION  
Heavy-duty ——— Light-duty ———  
Unimproved dirt ———  
Interstate Route — U.S. Route — State Route

U.S.G.S.  
FBI COPY  
TOPOGRAPHIC DIVISION

FLUSHING, N. Y.  
SE/4 HARLEM 15 QUADRANGLE  
N4045—W7345/7.5  
1966  
AMS 6265 IV SE—SERIES V821

3720  
JUN 2 1966