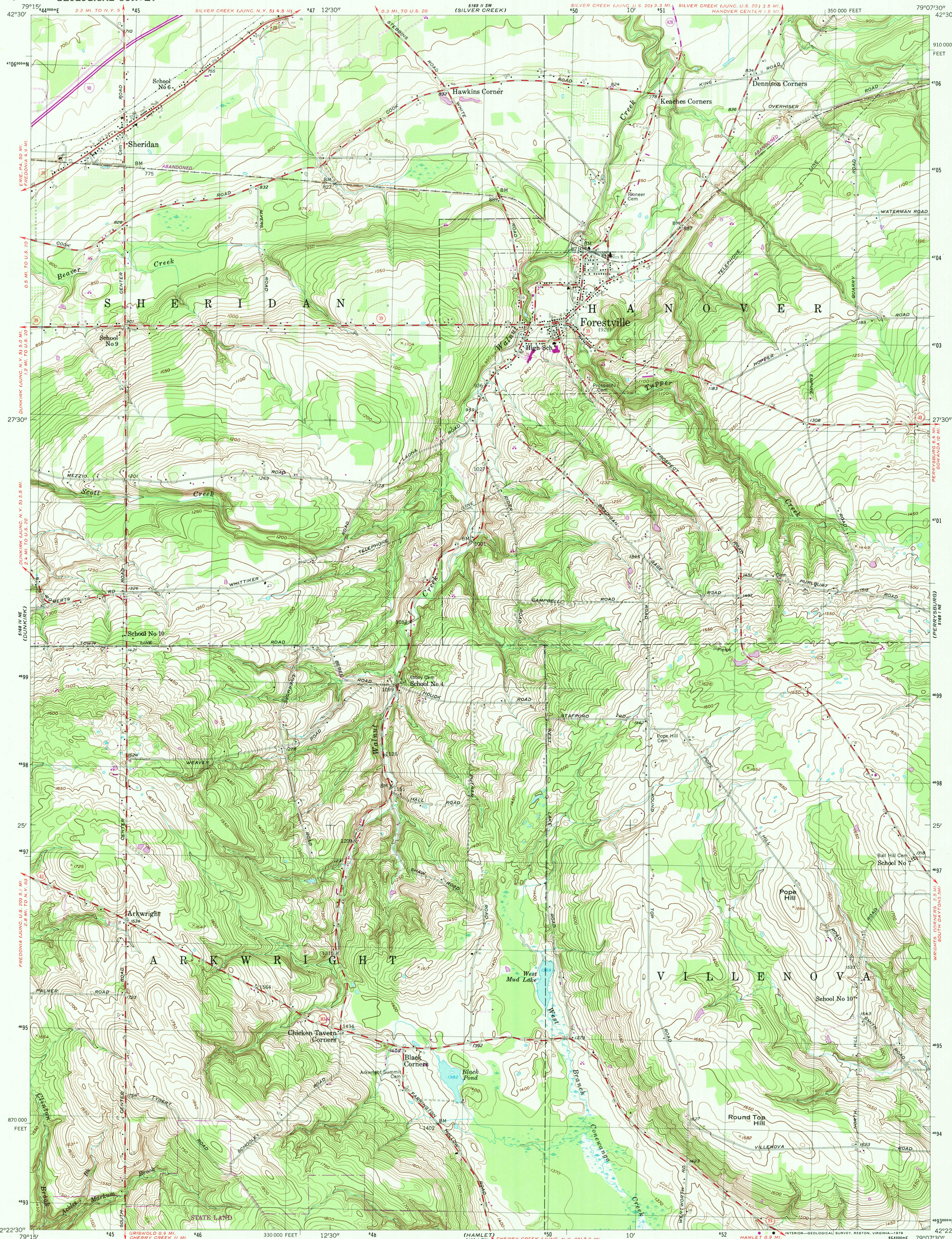


UNITED STATES  
DEPARTMENT OF THE INTERIOR  
GEOLOGICAL SURVEY

FORESTVILLE QUADRANGLE  
NEW YORK—CHAUTAUQUA CO.  
7.5 MINUTE SERIES (TOPOGRAPHIC)



Mapped, edited, and published by the Geological Survey

Control by USGS and USC&GS

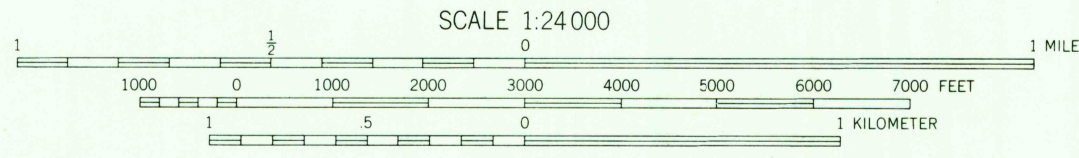
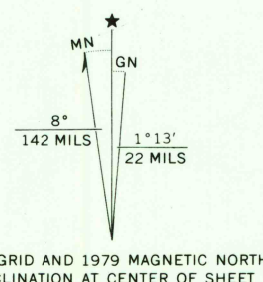
Topography from aerial photographs by photogrammetric methods.  
Aerial photographs taken 1953. Field check 1954

Polyconic projection. 1927 North American datum  
10,000-foot grid based on New York coordinate system, west zone  
1000 meter Universal Transverse Mercator grid, zone 17

Unlabelled wells are gas wells

There may be private inholdings within the boundaries of  
the National or State reservations shown on this map

Revisions shown in purple and woodland compiled from  
aerial photographs taken 1976 and other source data  
This information not field checked. Map edited 1979



CONTOUR INTERVAL 10 FEET  
NATIONAL GEODETIC VERTICAL DATUM OF 1929

THIS MAP COMPLIES WITH NATIONAL MAP ACCURACY STANDARDS  
FOR SALE BY U.S. GEOLOGICAL SURVEY, RESTON VIRGINIA 22092  
A FOLDER DESCRIBING TOPOGRAPHIC MAPS AND SYMBOLS IS AVAILABLE ON REQUEST



ROAD CLASSIFICATION  
Heavy-duty ——— Light-duty ———  
Medium-duty ——— Unimproved dirt ———  
U.S. Route ——— State Route ———  
Interstate Route ———

FORESTVILLE, N. Y.

N 4222.5 — W 7907.5 / 7.5

1954  
PHOTOREVISED 1979  
AMS 5168 I NW-SERIES V821

SEP 27 1984  
RETURN TO:  
USGS AND HISTORICAL MAP ARCHIVES