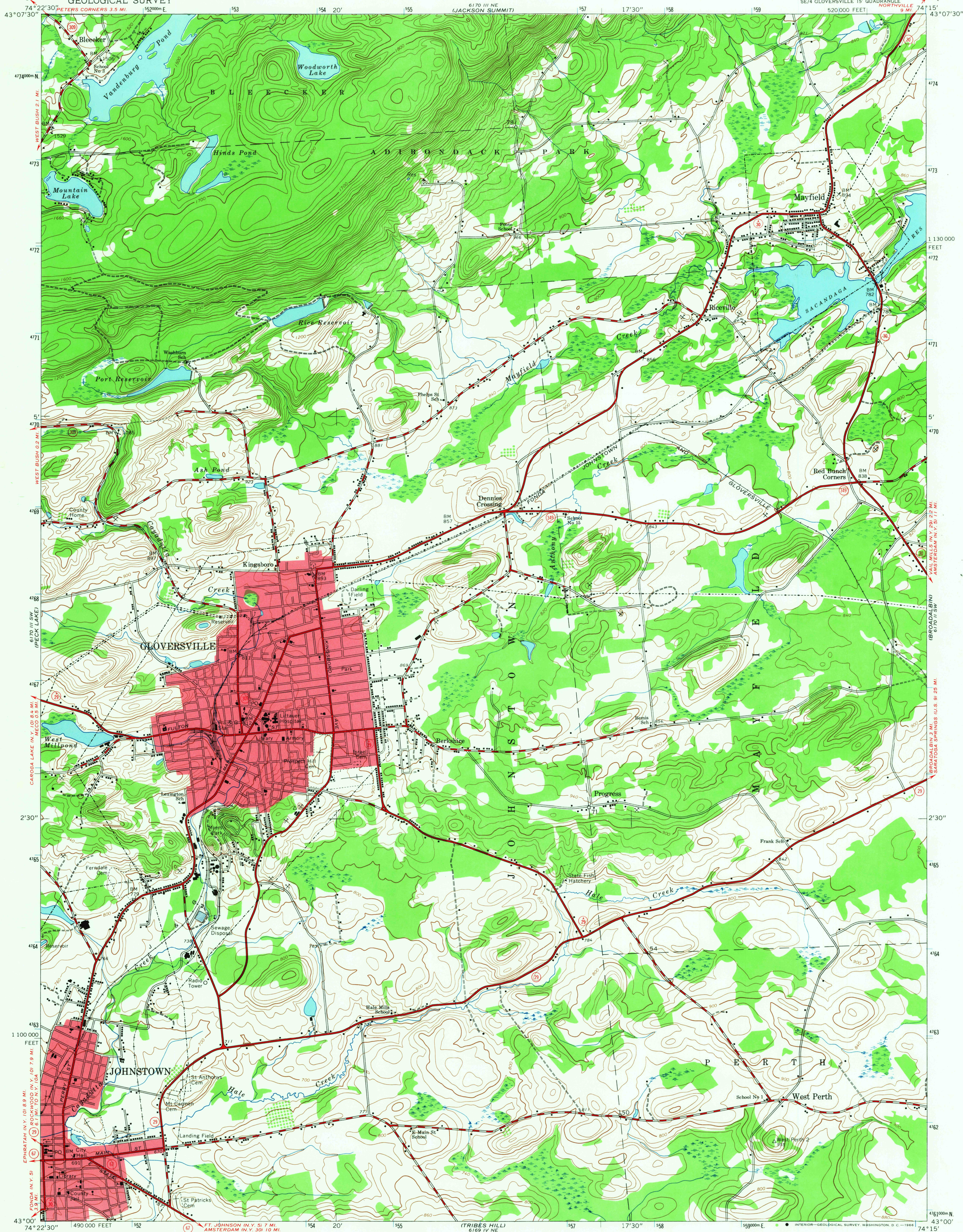
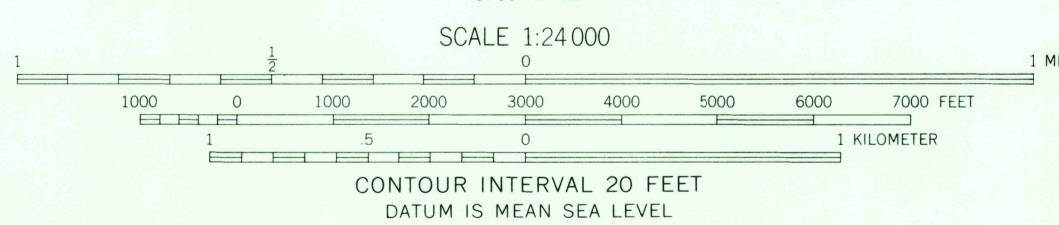
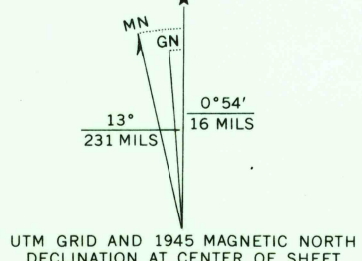


UNITED STATES
DEPARTMENT OF THE INTERIOR
GEOLOGICAL SURVEY

GLOVERSVILLE QUADRANGLE
NEW YORK—FULTON CO.
7.5 MINUTE SERIES (TOPOGRAPHIC)



Mapped by the Army Map Service
Published for civil use by the Geological Survey
Control by USC&GS and TVA
Topography by photogrammetric methods from aerial
photographs taken 1943. Field checked 1945
Polyconic projection. 1927 North American datum
10,000-foot grid based on New York coordinate system,
east zone
1000-meter Universal Transverse Mercator grid ticks,
zone 18, shown in blue



| ROAD CLASSIFICATION | |
|---------------------|-----------------|
| Heavy-duty | Light-duty |
| Medium-duty | Unimproved dirt |
| State Route | |

THIS MAP COMPLIES WITH NATIONAL MAP ACCURACY STANDARDS
FOR SALE BY U. S. GEOLOGICAL SURVEY, WASHINGTON, D. C. 20242
A FOLDER DESCRIBING TOPOGRAPHIC MAPS AND SYMBOLS IS AVAILABLE ON REQUEST

U.S.G.S.
GLOVERSVILLE, N. Y.
SE/4 GLOVERSVILLE 15' QUADRANGLE
N4300—W7415/7.5
1945
AMS 6170 III SE—SERIES V821

5075
DEC 1 1965