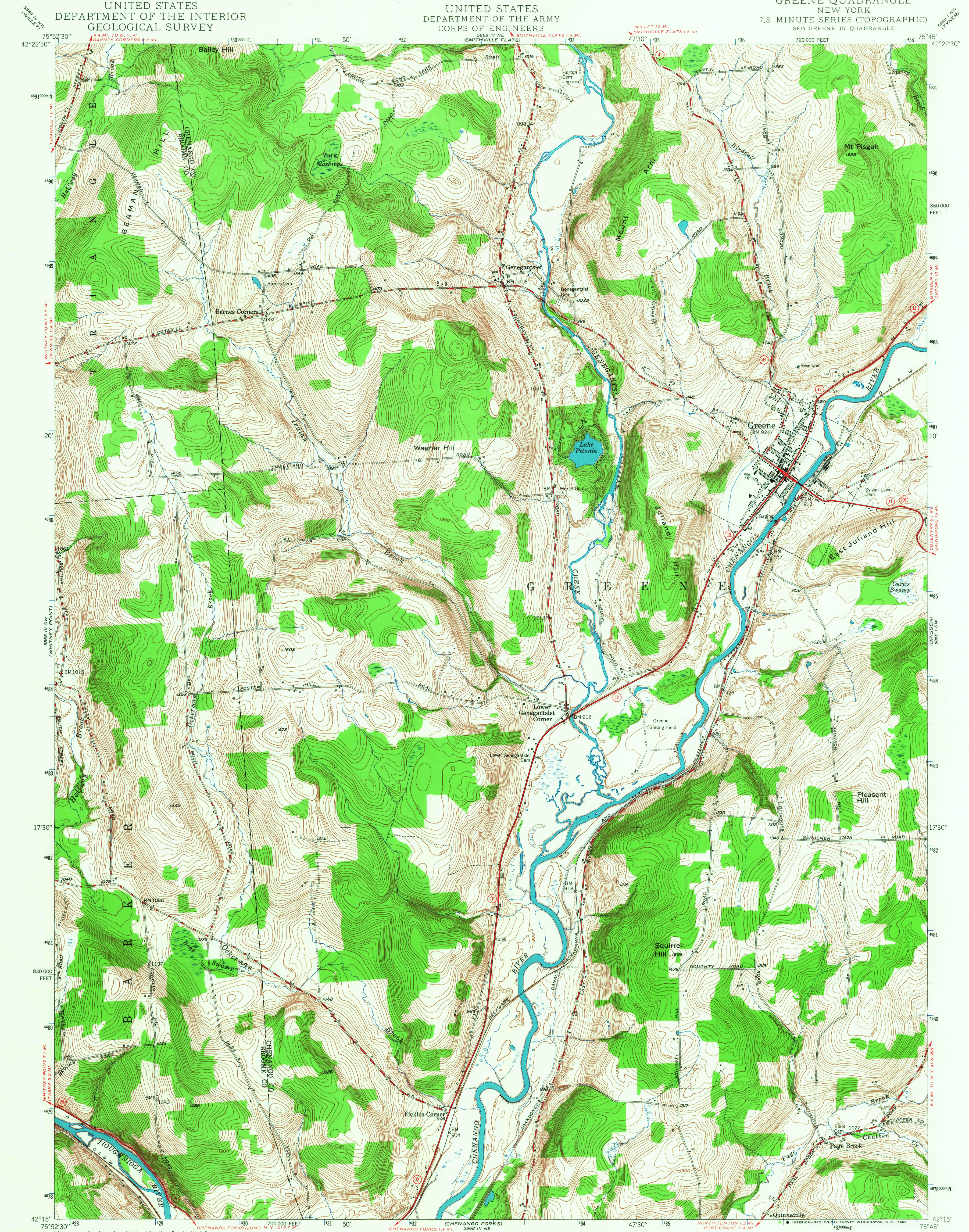


UNITED STATES
DEPARTMENT OF THE INTERIOR
GEOLOGICAL SURVEY

UNITED STATES
DEPARTMENT OF THE ARMY
CORPS OF ENGINEERS

GREENE QUADRANGLE
NEW YORK
7.5 MINUTE SERIES (TOPOGRAPHIC)
SE/4 GREENE 15' QUADRANGLE



Control by USGS and USC&GS

Topography from aerial photographs by multiplex methods

Aerial photographs taken 1944. Field check 1948

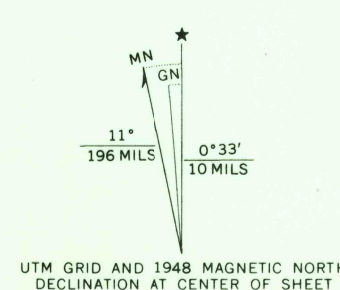
Polyconic projection. 1927 North American datum

10,000-foot grid based on New York coordinate system,

central zone

1000-meter Universal Transverse Mercator grid ticks,

zone 18, shown in blue



CONTOUR INTERVAL 10 FEET
DATUM IS MEAN SEA LEVEL

THIS MAP COMPLIES WITH NATIONAL MAP ACCURACY STANDARDS
FOR SALE BY U. S. GEOLOGICAL SURVEY, WASHINGTON, D. C. 20242
A FOLDER DESCRIBING TOPOGRAPHIC MAPS AND SYMBOLS IS AVAILABLE ON REQUEST

USGS
Historical File
Topographic Division

ROAD CLASSIFICATION
HARD-SURFACE ALL WEATHER ROADS DRY WEATHER ROADS
Heavy-duty LANE 1 Improved dirt
Medium-duty LANE 2 Unimproved dirt
Loose-surface, graded, or narrow hard-surface
U. S. Route State Route

GREENE, N. Y.
SE/4 GREENE 15' QUADRANGLE
N4215-W7545/7.5
1948
AMS 5868 IV SE-SERIES V821

2310
MAY 9 1968