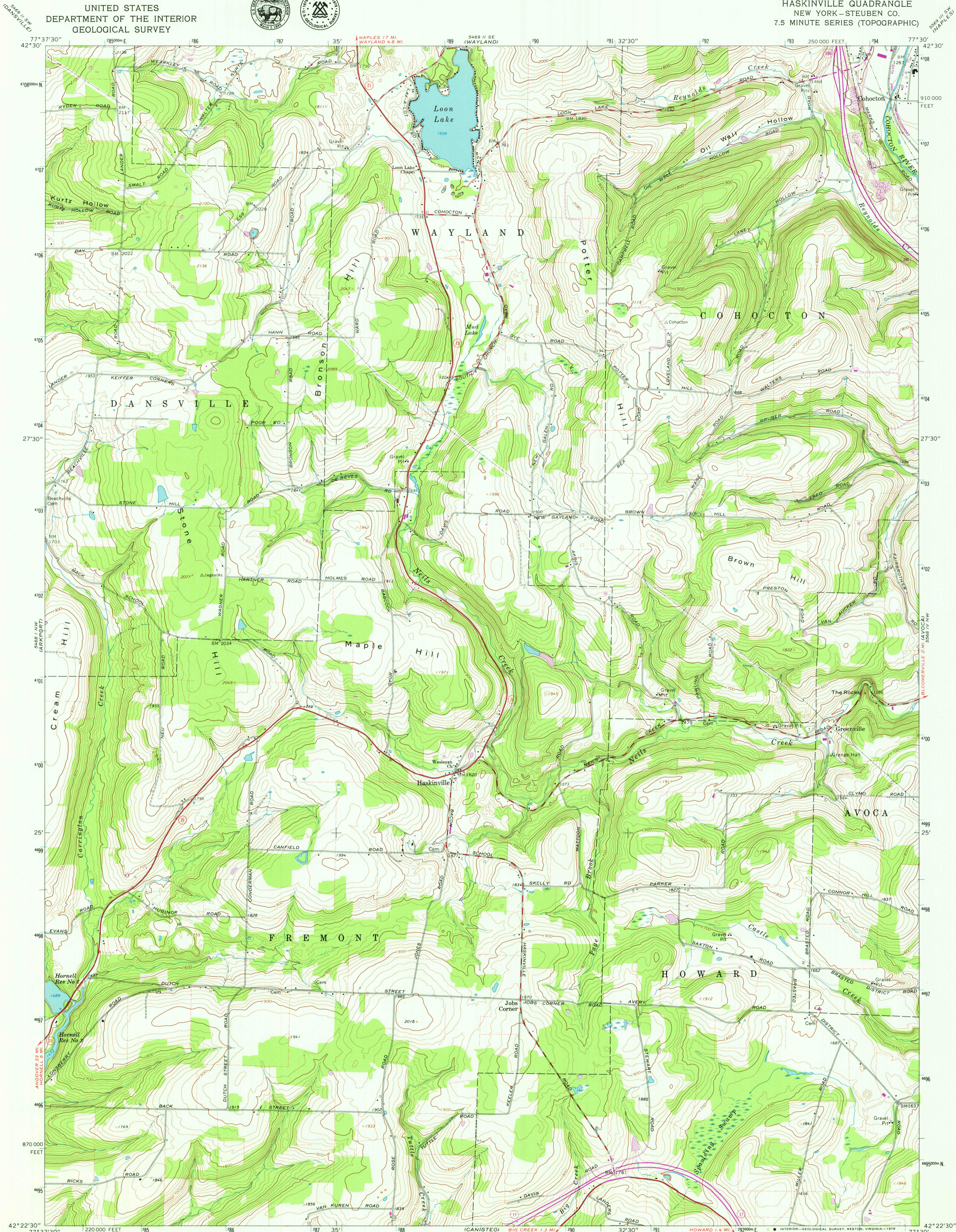


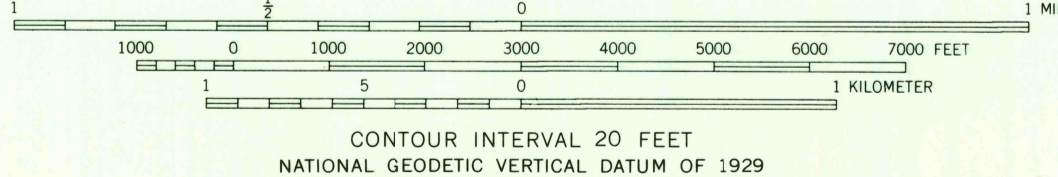
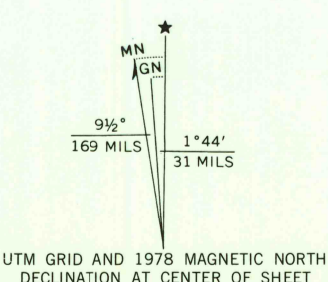
UNITED STATES
DEPARTMENT OF THE INTERIOR
GEOLOGICAL SURVEY



HASKINVILLE QUADRANGLE
NEW YORK-STEUBEN CO.
7.5 MINUTE SERIES (TOPOGRAPHIC)



Mapped, edited, and published by the Geological Survey
Control by USGS and USC&GS
Topography by photogrammetric methods from aerial
photographs taken 1963. Field checked 1965
Polyconic projection. 1927 North American datum
10,000-foot grid based on New York coordinate system, central zone
1000-meter Universal Transverse Mercator grid ticks,
zone 18, shown in blue
Fine red dashed lines indicate selected fence and field lines where
generally visible on aerial photographs. This information is unchecked
Revisions shown in purple and woodland compiled from
aerial photographs taken 1976 and other source data.
This information not field checked. Map edited 1978



ROAD CLASSIFICATION
Primary highway, all weather, hard surface
Secondary highway, all weather, hard surface
Light-duty road, all weather, improved surface
Unimproved road, fair or dry weather
Interstate Route
U. S. Route
State Route

USGS
Historical File
Topographic Division
HASKINVILLE, N. Y.
N4222.5-W7730/7.5
1965
PHOTOREVISED 1978
AMS 5468 I NE-SERIES V821

THIS MAP COMPLIES WITH NATIONAL MAP ACCURACY STANDARDS
FOR SALE BY U. S. GEOLOGICAL SURVEY, RESTON, VIRGINIA 22092
A FOLDER DESCRIBING TOPOGRAPHIC MAPS AND SYMBOLS IS AVAILABLE ON REQUEST

APR 18 1978