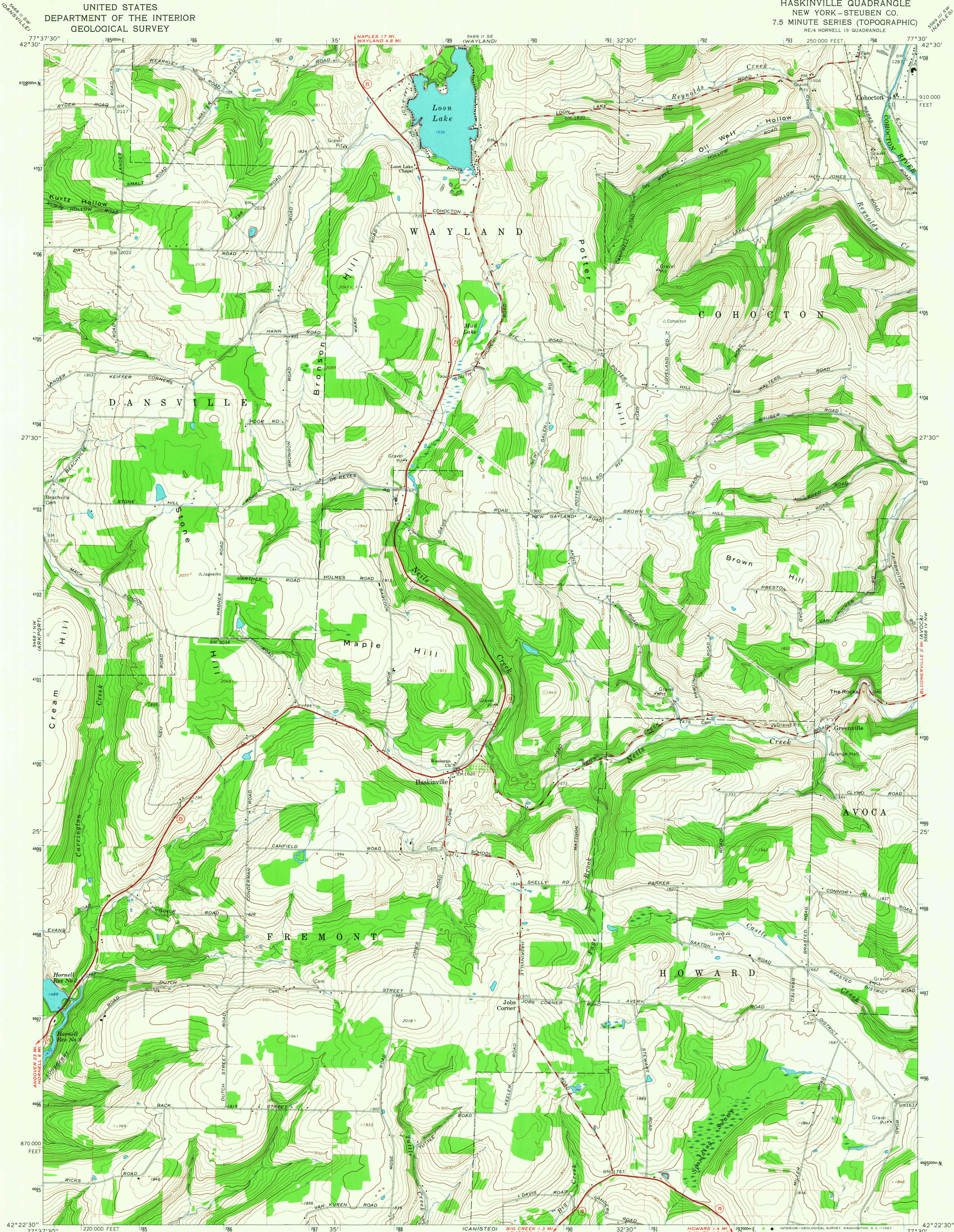


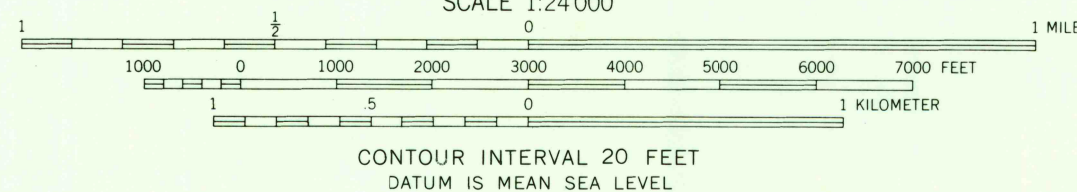
UNITED STATES  
DEPARTMENT OF THE INTERIOR  
GEOLOGICAL SURVEY

HASKINVILLE QUADRANGLE  
NEW YORK-STEUBEN CO.  
7.5 MINUTE SERIES (TOPOGRAPHIC)  
NE 1/4 HORNELL 15' QUADRANGLE



Mapped, edited, and published by the Geological Survey  
Control by USGS and USC&GS  
Topography by photogrammetric methods from aerial  
photographs taken 1963. Field checked 1965  
Polyconic projection. 1927 North American datum  
10,000-foot grid based on New York coordinate system, central zone  
1000-meter Universal Transverse Mercator grid ticks,  
zone 18, shown in blue  
Fine red dashed lines indicate selected fence and field lines where  
generally visible on aerial photographs. This information is unchecked

UTM GRID AND 1965 MAGNETIC NORTH  
DECLINATION AT CENTER OF SHEET



ROAD CLASSIFICATION  
Heavy-duty ————— Light-duty —————  
Medium-duty ————— Unimproved dirt —————  
State Route

THIS MAP COMPLIES WITH NATIONAL MAP ACCURACY STANDARDS  
FOR SALE BY U.S. GEOLOGICAL SURVEY, WASHINGTON, D.C. 20242  
A FOLDER DESCRIBING TOPOGRAPHIC MAPS AND SYMBOLS IS AVAILABLE ON REQUEST

USGS  
Historical File  
Topographic Division  
FILE COPY  
TOPOGRAPHIC DIVISION

HASKINVILLE, N. Y.  
NE 1/4 HORNELL 15' QUADRANGLE  
N4222.5-W7730.7.5  
1965  
AMS 5468 I NE-SERIES V821

3690  
NOV 1 1967