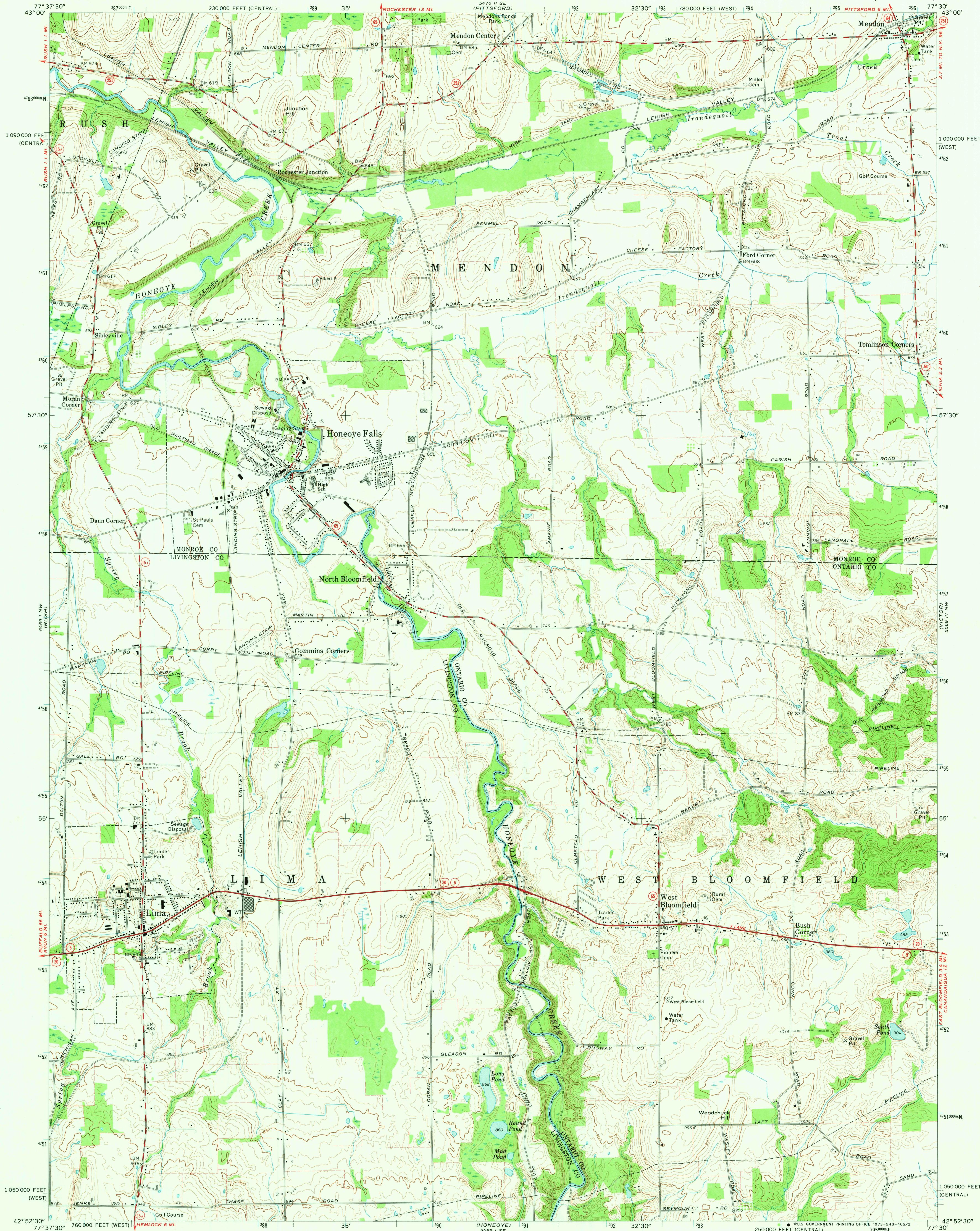


UNITED STATES  
DEPARTMENT OF THE INTERIOR  
GEOLOGICAL SURVEY

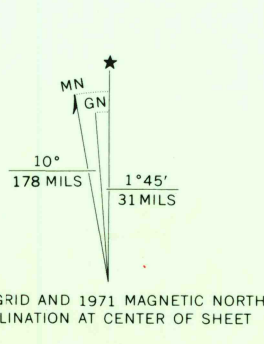
STATE OF NEW YORK  
DEPARTMENT OF TRANSPORTATION

HONEOYE FALLS QUADRANGLE  
NEW YORK  
7.5 MINUTE SERIES (TOPOGRAPHIC)



Mapped, edited, and published by the Geological Survey  
Control by USGS, USC&GS, and New York Geodetic Survey  
Topography by photogrammetric methods from aerial photographs  
taken 1971. Field checked 1971  
Supersedes map dated 1951

Projection: New York coordinate system, west zone  
(transverse Mercator)  
10,000-foot grid ticks based on New York coordinate system,  
west and central zones  
1000-meter Universal Transverse Mercator grid ticks,  
zone 18, shown in blue. 1927 North American datum  
Fine red dashed lines indicate selected fence and field lines where  
generally visible on aerial photographs. This information is unchecked



CONTOUR INTERVAL 10 FEET  
DATUM IS MEAN SEA LEVEL

THIS MAP COMPLIES WITH NATIONAL MAP ACCURACY STANDARDS  
FOR SALE BY U. S. GEOLOGICAL SURVEY, WASHINGTON, D. C. 20242  
A FOLDER DESCRIBING TOPOGRAPHIC MAPS AND SYMBOLS IS AVAILABLE ON REQUEST

ROAD CLASSIFICATION  
Primary highway, hard or improved surface  
Secondary highway, hard surface  
Unimproved road  
Interstate Route  
U. S. Route  
State Route

HONEOYE FALLS, N.Y.  
N4252.5-W7730.7.5

1971

AMS 5469 1 NE-SERIES V821

DEC 8 1973  
Horn  
3000  
50 plane