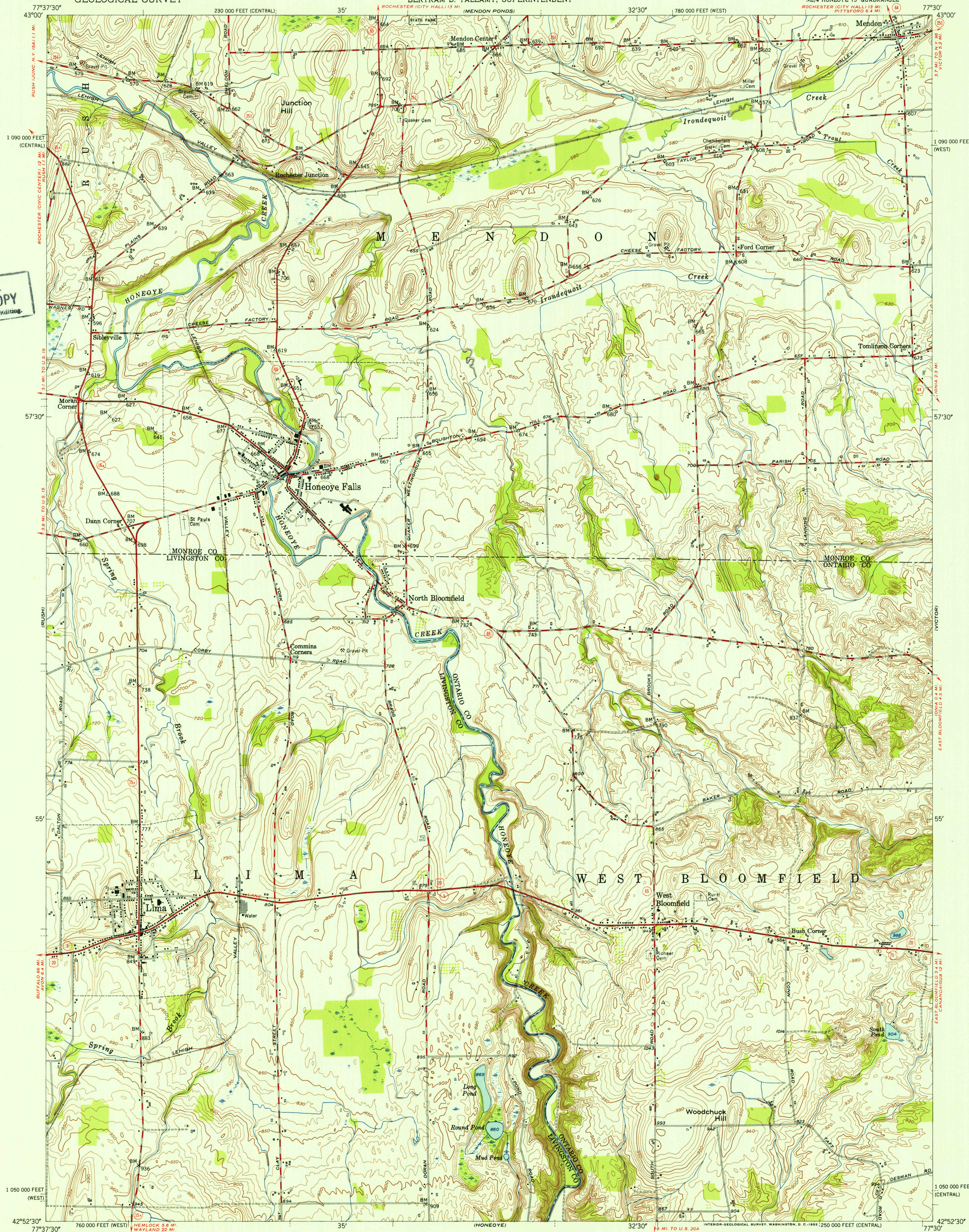


HONEOYE FALLS QUADRANGLE
NEW YORK
7.5 MINUTE SERIES (TOPOGRAPHIC)

U. S. W. S.
FILE COPY
and Editing.




37/30
Mapped, edited, and published by the Geological Survey
Control by USGS, USC&GS, and New York Geodetic Survey
Culture and drainage in part compiled by Corps of Engineers,
Dept. of the Army, from aerial photographs taken 1942
Topography by plane-table surveys 1951
Contours in Monroe County surveyed 1932. Revised 1951
Polyconic projection. 1927 North American datum
10,000-foot grids based on New York coordinate system,
west and central zones

THIS MAP COMPLIES WITH NATIONAL MAP ACCURACY STANDARDS
FOR SALE BY U. S. GEOLOGICAL SURVEY, WASHINGTON 25, D. C.
A FOLDER DESCRIBING TOPOGRAPHIC MAPS AND SYMBOLS IS AVAILABLE ON REQUEST

USCS
Historical File
Topographic Division

ROAD CLASSIFICATION

	<u>4 LANE</u> <u>6 LANE</u>	Light-duty	
	<u>4 LANE</u> <u>6 LANE</u>	Unimproved dirt	

I. S. Route  State Route

HONEOYE FALLS, N. Y.
NE/4 HONEOYE 15' QUADRANGLE
N4252.5-W7730/7.5

1951

DEC 23 1952