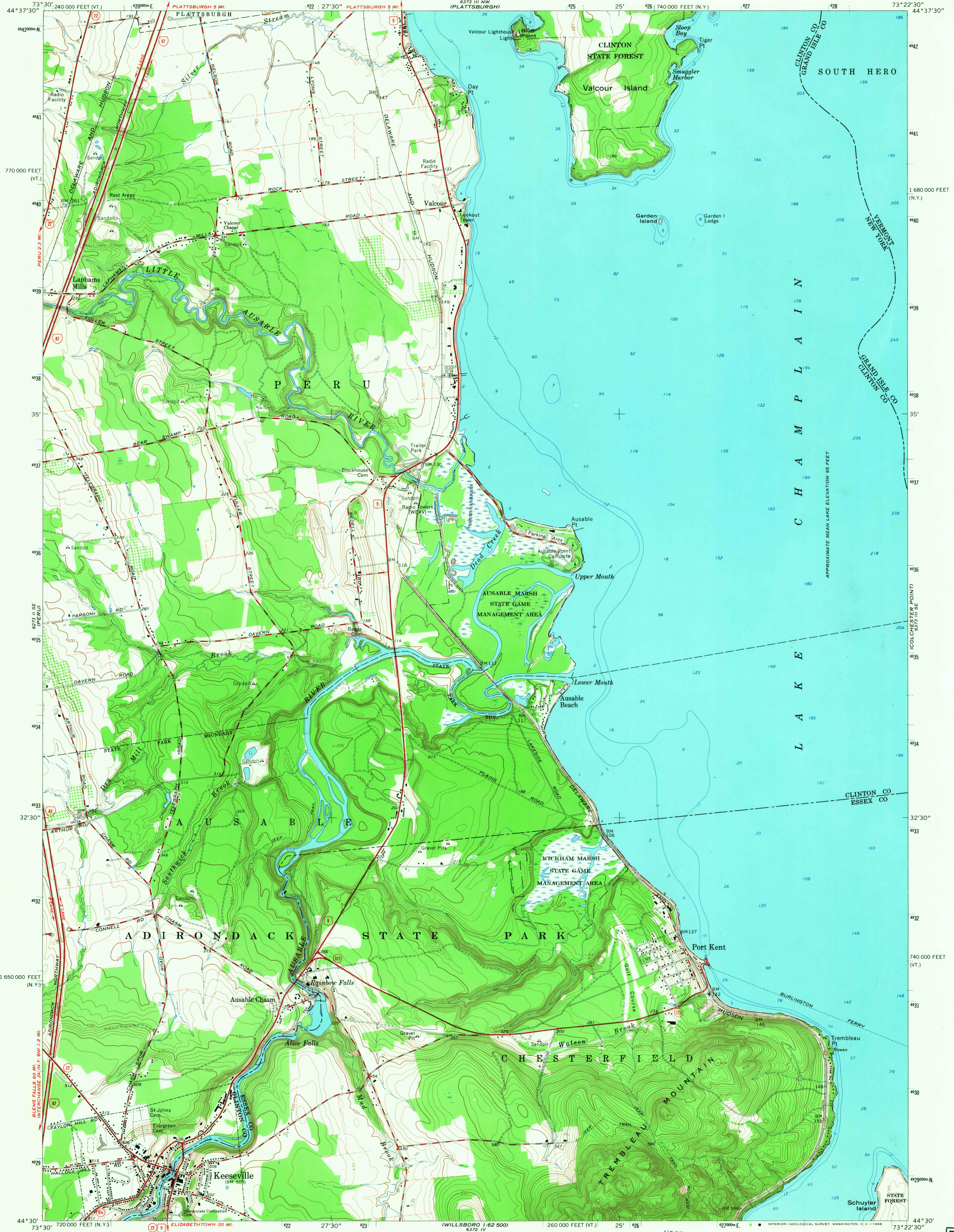


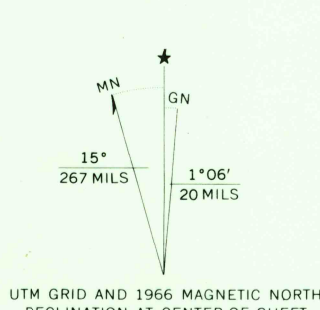
UNITED STATES
DEPARTMENT OF THE INTERIOR
GEOLOGICAL SURVEY

STATE OF NEW YORK
DEPARTMENT OF TRANSPORTATION

KEESEVILLE QUADRANGLE
NEW YORK-VERMONT
7.5 MINUTE SERIES (TOPOGRAPHIC)
SW/4 PLATTSBURGH 15' QUADRANGLE



Mapped, edited, and published by the Geological Survey
Control by USGS, USC&GS, and U.S. Lake Survey
Topography by photogrammetric methods from aerial photographs
taken 1964. Field checked 1966
Selected hydrographic data compiled from U.S. Lake Survey Chart
172 (1962). This information is not intended for navigational purposes
Polyconic projection. 1927 North American datum
10,000-foot grids based on New York coordinate system, east zone,
and Vermont coordinate system
1000-meter Universal Transverse Mercator grid ticks,
zone 18, shown in blue
Fine red dashed lines indicate selected fence and field lines where
generally visible on aerial photographs. This information is unchecked



CONTOUR INTERVAL 10 FEET
DATUM IS MEAN SEA LEVEL
DEPTH CURVES AND SOUNDINGS IN FEET—DATUM IS MEAN LOW WATER 92.5 FEET

THIS MAP COMPLIES WITH NATIONAL MAP ACCURACY STANDARDS
FOR SALE BY U.S. GEOLOGICAL SURVEY, WASHINGTON, D.C. 20242
A FOLDER DESCRIBING TOPOGRAPHIC MAPS AND SYMBOLS IS AVAILABLE ON REQUEST

USGS
Historical File
Topographic Division



ROAD CLASSIFICATION
Heavy-duty ——— Light-duty ———
Medium-duty ——— Unimproved dirt ———
Interstate Route U.S. Route State Route

KEESEVILLE, N. Y.—VT.
SW/4 PLATTSBURGH 15' QUADRANGLE
N4430—W7322.5/7.5
1966
AMS 6373 III SW—SERIES V821

U.S.G.S.
FILE COPY
TOPOGRAPHIC DIVISION

3070
JUL 21 1968