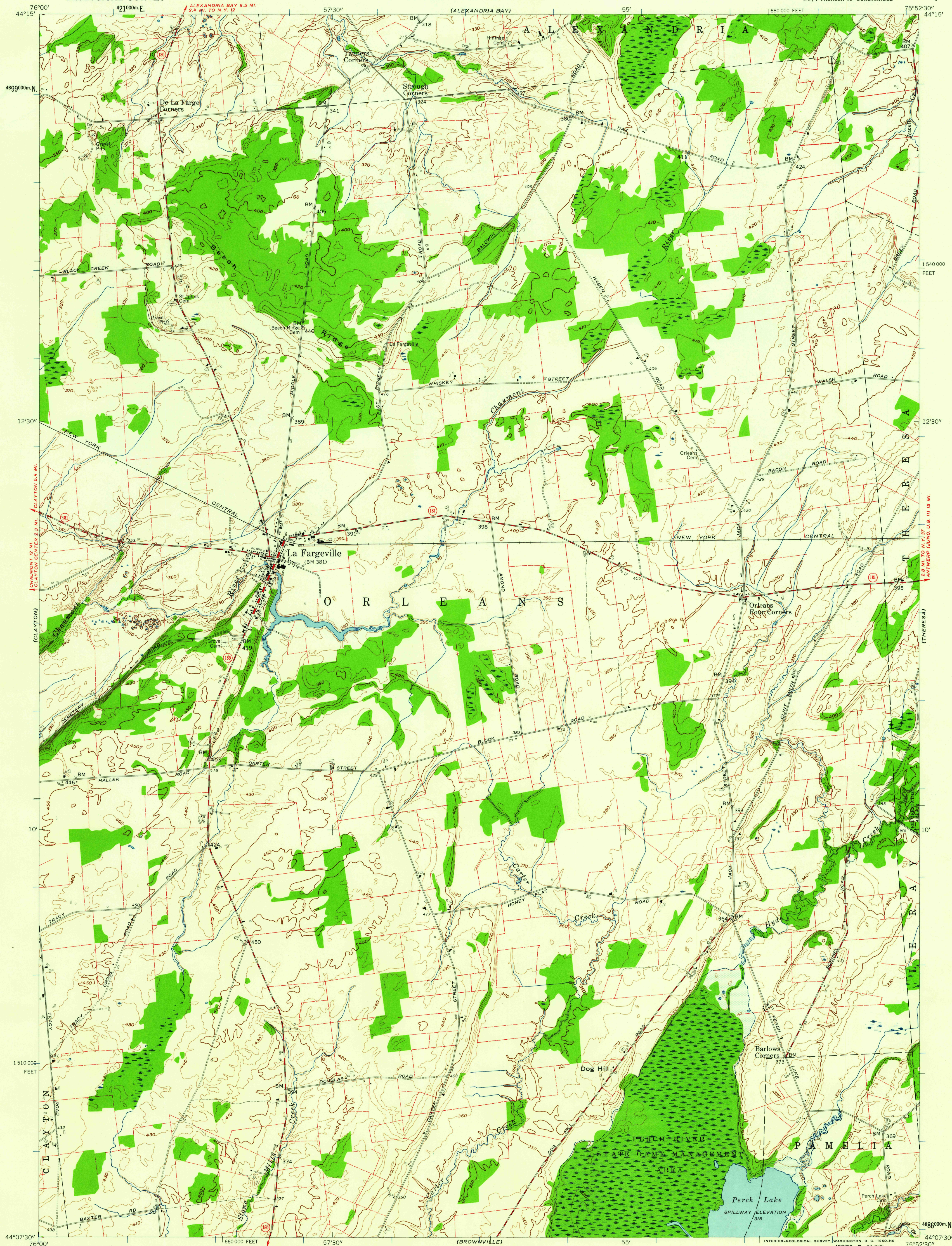


UNITED STATES
DEPARTMENT OF THE INTERIOR
GEOLOGICAL SURVEY

STATE OF NEW YORK
DEPARTMENT OF PUBLIC WORKS

LA FARGEVILLE QUADRANGLE
NEW YORK-JEFFERSON CO.
7.5 MINUTE SERIES (TOPOGRAPHIC)
NW 1/4 THERESA 15' QUADRANGLE



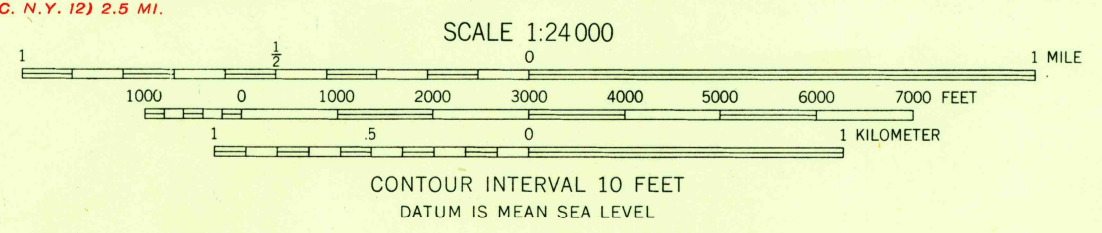
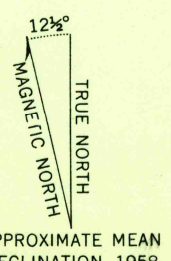
Maped, edited, and published by the Geological Survey
Control by USGS and USC&GS

Topography from aerial photographs by photogrammetric methods
Aerial photographs taken 1957. Field check 1958

Polyconic projection. 1927 North American datum
10,000-foot grid based on New York coordinate system, central zone
1000-meter Universal Transverse Mercator grid ticks,
zone 18, shown in blue

Fine red dashed lines indicate selected fence and field lines
visible on aerial photographs. This information is unchecked

Area covered by dashed light-blue pattern indicates the water
management rights of the New York State Conservation Department
and is subject to controlled inundation to 324 feet



USGS
Historical File
Topographic Division

ROAD CLASSIFICATION
Medium-duty ——— Light-duty ———
Unimproved dirt ———
○ State Route



LA FARGEVILLE, N. Y.
NW 1/4 THERESA 15' QUADRANGLE
N 4407.5 - W 7552.5/7.5

1958

THIS MAP COMPLIES WITH NATIONAL MAP ACCURACY STANDARDS
FOR SALE BY U. S. GEOLOGICAL SURVEY, WASHINGTON 25, D. C.
A FOLDER DESCRIBING TOPOGRAPHIC MAPS AND SYMBOLS IS AVAILABLE ON REQUEST

U.S.G.S.
FILE COPY
TOPOGRAPHIC DIVISION

APR 13 1960

2540