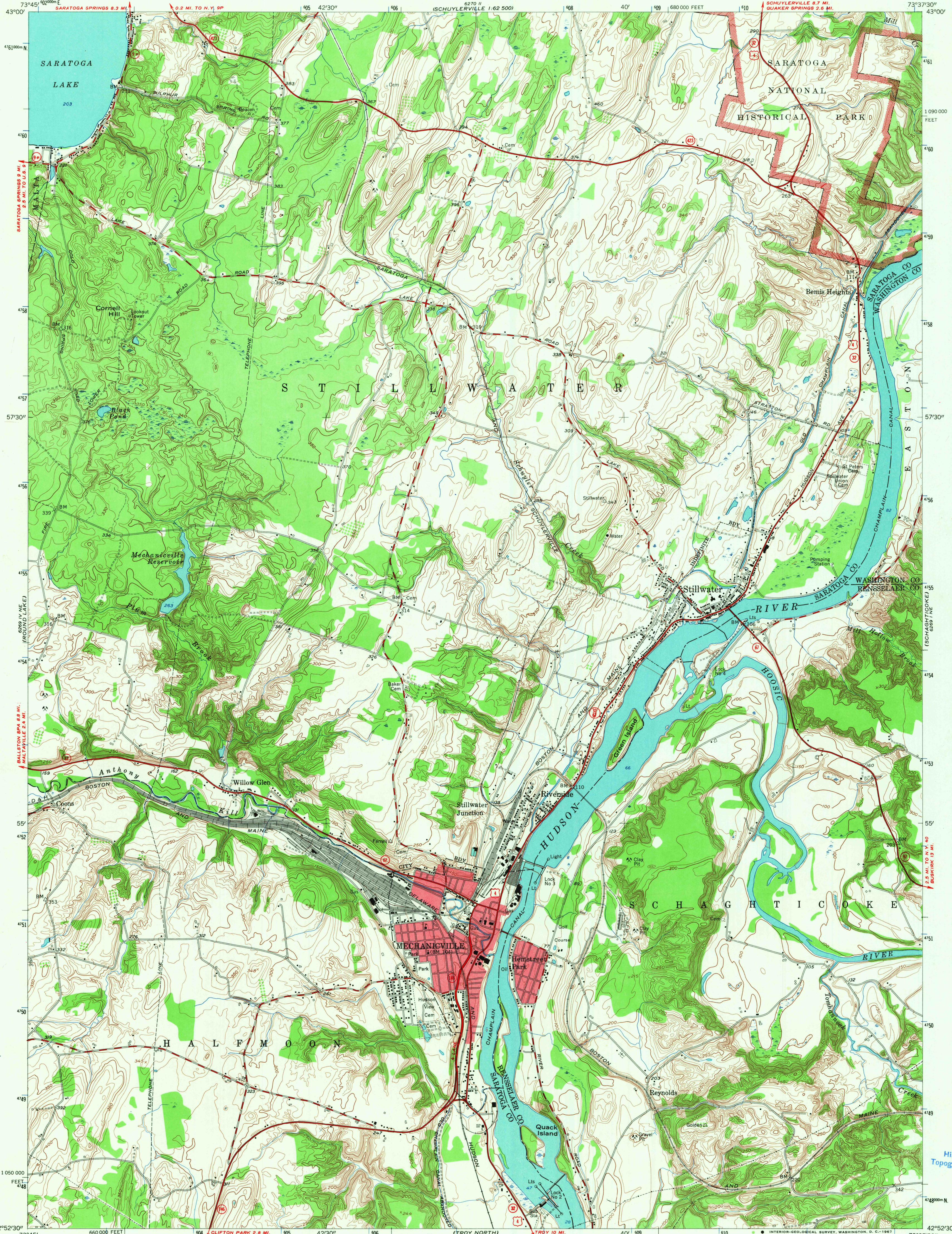


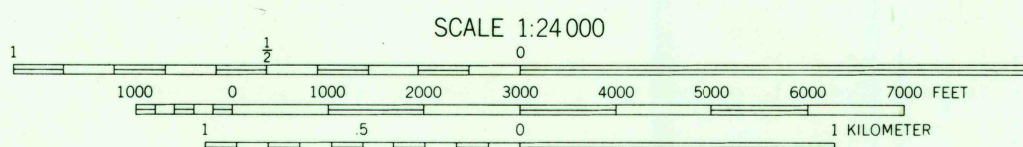
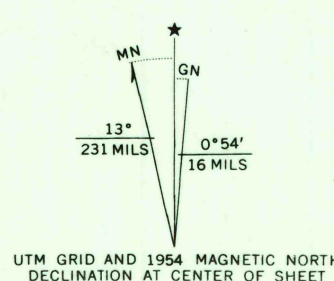
UNITED STATES
DEPARTMENT OF THE INTERIOR
GEOLOGICAL SURVEY

MECHANICVILLE QUADRANGLE
NEW YORK
7.5 MINUTE SERIES (TOPOGRAPHIC)
NW 1/4 COHOES 15' QUADRANGLE



Mapped, edited, and published by the Geological Survey

Control by USGS and USC&GS
Topography from aerial photographs by stereophotogrammetric methods. Aerial photographs taken 1952. Field check 1954
Polyconic projection. 1927 North American datum
10,000-foot grid based on New York coordinate system, east zone
Red tint indicates areas in which only landmark buildings are shown
Unchecked elevations are shown in brown
1000-meter Universal Transverse Mercator grid ticks, zone 18, shown in blue



CONTOUR INTERVAL 10 FEET
DATUM IS MEAN SEA LEVEL

THIS MAP COMPLIES WITH NATIONAL MAP ACCURACY STANDARDS
FOR SALE BY U. S. GEOLOGICAL SURVEY, WASHINGTON, D. C. 20242
A FOLDER DESCRIBING TOPOGRAPHIC MAPS AND SYMBOLS IS AVAILABLE ON REQUEST

USGS
Historical File
Topographic Division



ROAD CLASSIFICATION
Heavy-duty ——— Light-duty ———
Medium-duty ——— Unimproved dirt ———
U. S. Route — State Route

U.S.G.S.
FILE COPY
TOPOGRAPHIC DIVISION

MECHANICVILLE, N. Y.
NW 1/4 COHOES 15' QUADRANGLE
N 4252.5 - W 7337.5/7.5

AMS 6269 1 NW-SERIES V821

USGS
Historical File
Topographic Division

3215
MAR 23 1967