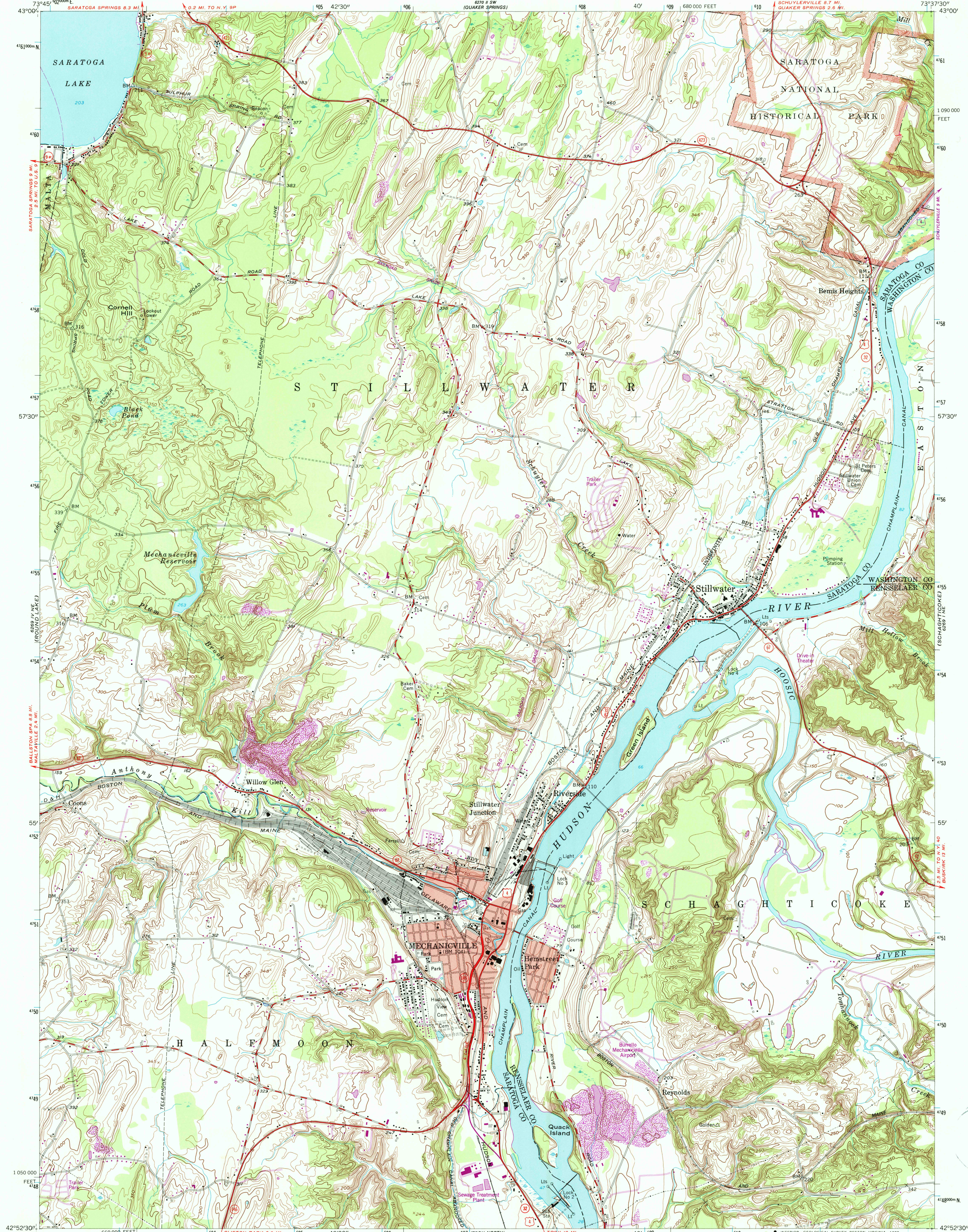


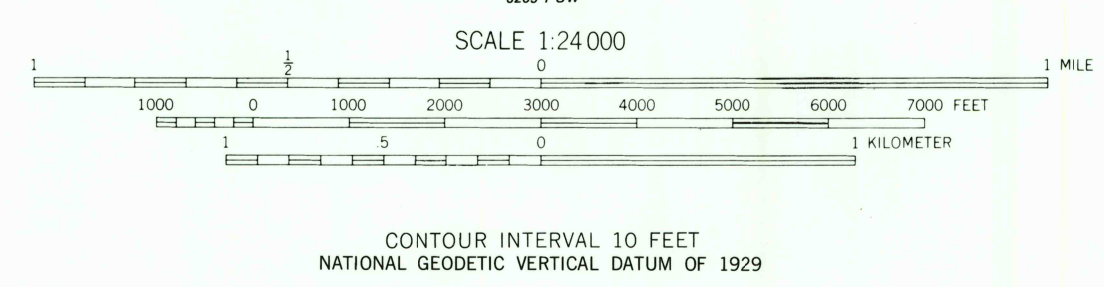
UNITED STATES
DEPARTMENT OF THE INTERIOR
GEOLOGICAL SURVEY

MECHANICVILLE QUADRANGLE
NEW YORK
7.5 MINUTE SERIES (TOPOGRAPHIC)
NW 1/4 COHOES 15' QUADRANGLE



Mapped, edited, and published by the Geological Survey
Control by USGS and USC&GS
Topography from aerial photographs by stereophotogrammetric
methods. Aerial photographs taken 1952. Field check 1954
Polyconic projection
10,000-foot grid based on New York coordinate system,
east zone
1000-meter Universal Transverse Mercator grid ticks
zone 18, shown in blue. 1927 North American Datum
To place on the predicted North American Datum 1983
move the projection lines 4 meters south and
35 meters west as shown by dashed corner ticks
Red tint indicates areas in which only landmark buildings are shown
Unchecked elevations are shown in brown
There may be private inholdings within the boundaries
of the National or State reservations shown on this map

Revisions shown in purple compiled from aerial photographs
taken 1978 and other source data. This information not
field checked. Map edited 1980



THIS MAP COMPLIES WITH NATIONAL MAP ACCURACY STANDARDS
FOR SALE BY U.S. GEOLOGICAL SURVEY
DENVER, COLORADO 80225, OR RESTON, VIRGINIA 22092
A FOLDER DESCRIBING TOPOGRAPHIC MAPS AND SYMBOLS IS AVAILABLE ON REQUEST

ROAD CLASSIFICATION
Heavy-duty ——— Light-duty ———
Medium-duty ——— Unimproved dirt ———
U.S. Route ——— State Route ———



MECHANICVILLE, N. Y.
NW 1/4 COHOES 15' QUADRANGLE
42073-H6-TF-024

1954
PHOTOREVISED 1980
DMA 6269 1 NW-SERIES V821

USGS HISTORICAL MAP
SEP 14 1988
REC'D FILE COPY