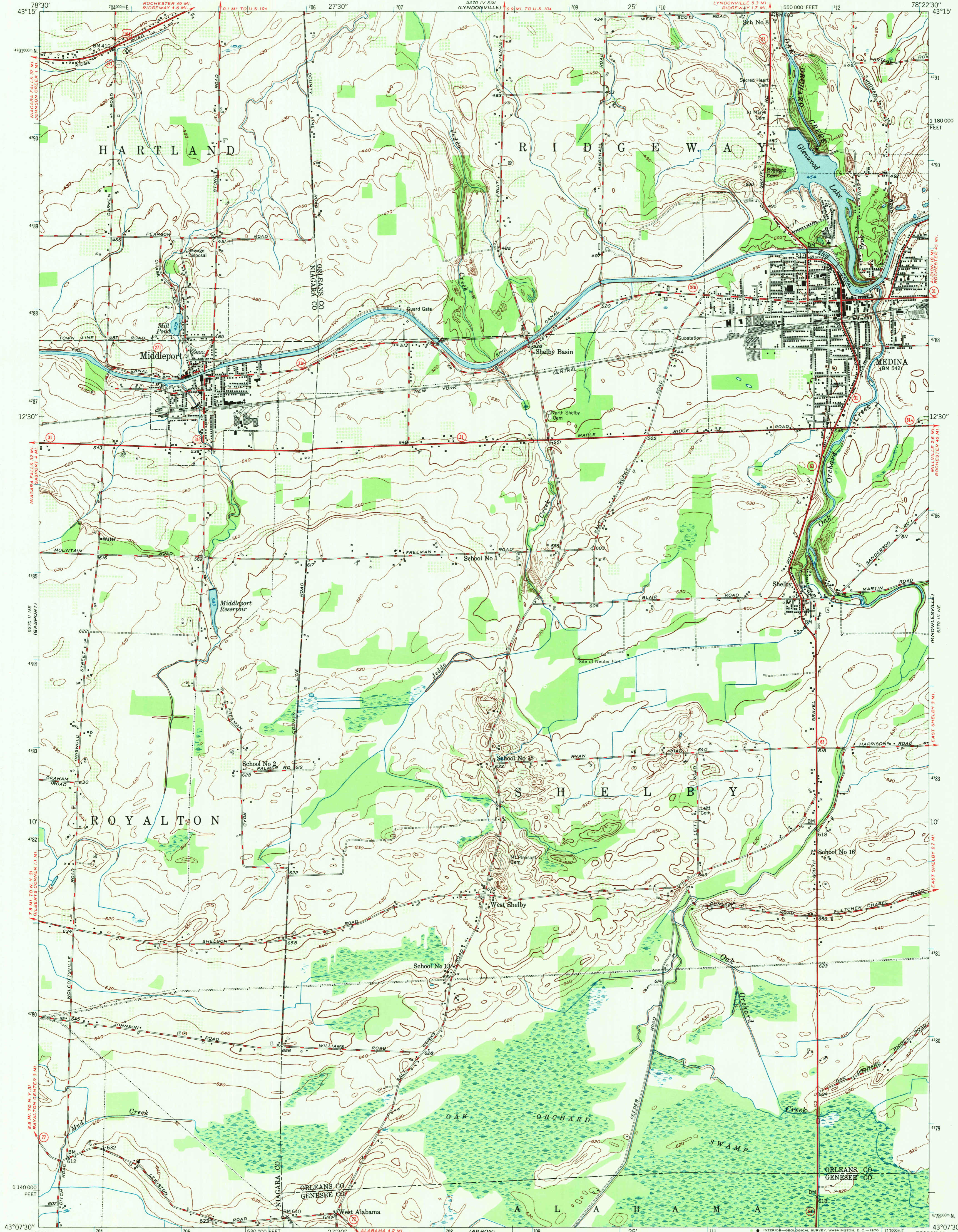


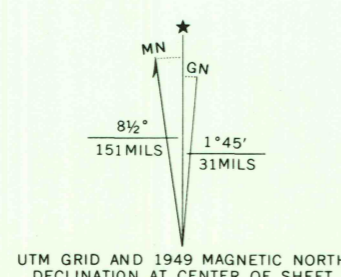
UNITED STATES  
DEPARTMENT OF THE INTERIOR  
GEOLOGICAL SURVEY

STATE OF NEW YORK  
DEPARTMENT OF PUBLIC WORKS  
BERTRAM D. TALLAM, SUPERINTENDENT

MEDINA QUADRANGLE  
NEW YORK  
7.5 MINUTE SERIES (TOPOGRAPHIC)  
NW/4 MEDINA 15' QUADRANGLE



Mapped, edited, and published by the Geological Survey  
Control by USGS and USC&GS  
Culture and drainage in part compiled by Corps of Engineers,  
Dept. of the Army, from aerial photographs taken 1942  
Topography by plane-table methods 1949  
Polyconic projection. 1927 North American datum  
10,000-foot grid based on New York coordinate system,  
west zone  
1000-meter Universal Transverse Mercator grid ticks,  
zone 17, shown in blue



CONTOUR INTERVAL 10 FEET  
DATUM IS MEAN SEA LEVEL

THIS MAP COMPLIES WITH NATIONAL MAP ACCURACY STANDARDS  
FOR SALE BY U. S. GEOLOGICAL SURVEY, WASHINGTON, D. C. 20242  
A FOLDER DESCRIBING TOPOGRAPHIC MAPS AND SYMBOLS IS AVAILABLE ON REQUEST

USGS  
Historical File  
Topographic Division

U.S.G.S.  
FILE COPY  
TOPOGRAPHIC DIVISION

ROAD CLASSIFICATION  
HARD-SURFACE ALL WEATHER ROADS DRY WEATHER ROADS  
Heavy-duty 4 LANE 6 LANE Improved dirt  
Medium-duty 4 LANE 6 LANE Unimproved dirt  
Loose-surface, graded, or narrow hard-surface  
U. S. Route State Route

MEDINA, N. Y.  
NW/4 MEDINA 15' QUADRANGLE  
N4307.5-W7822.5/7.5

1949  
AMS 5370 III NW-SERIES V821

2555  
AUG 26 1970