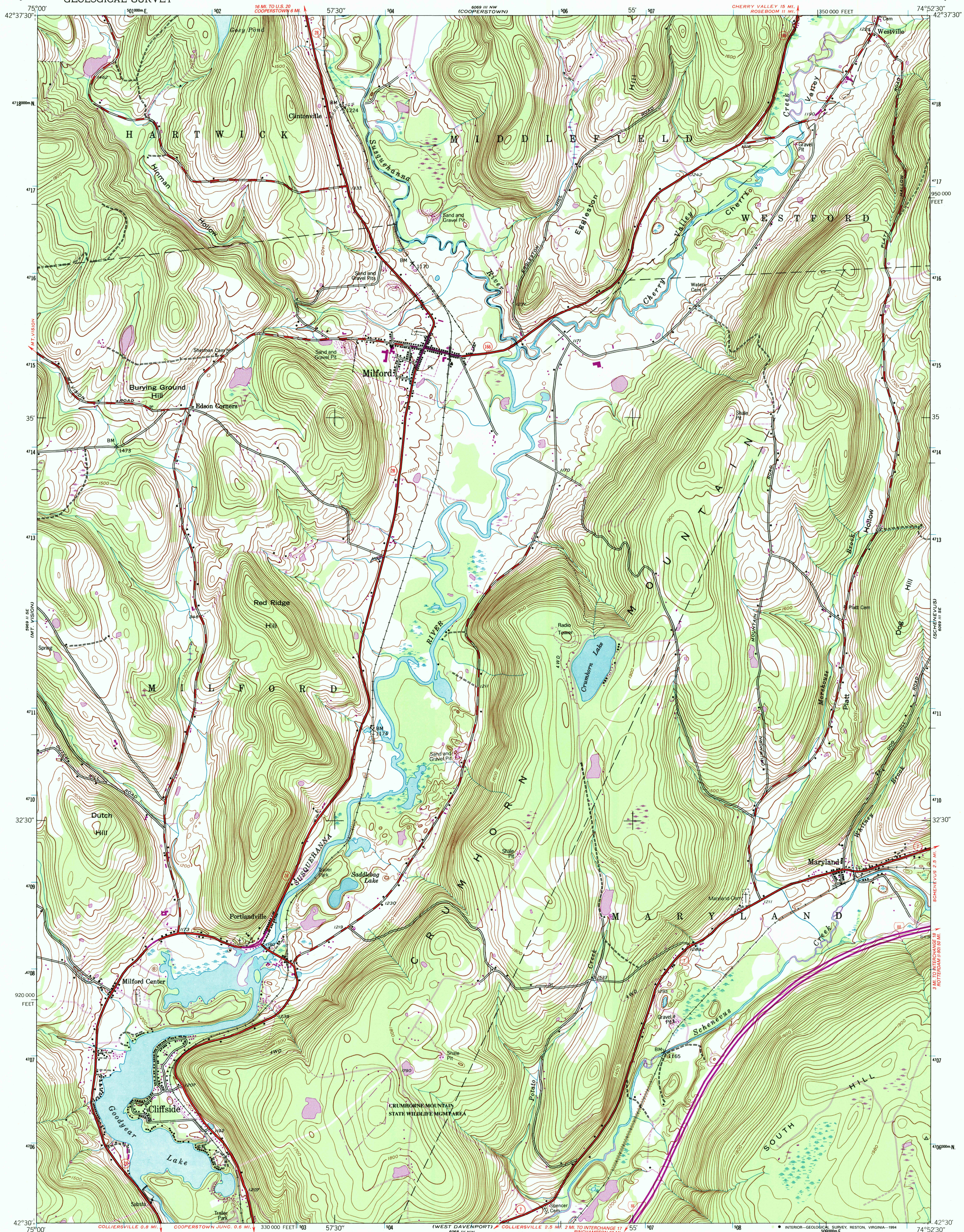


UNITED STATES  
DEPARTMENT OF THE INTERIOR  
GEOLOGICAL SURVEY

MILFORD QUADRANGLE  
NEW YORK-OTSEGO CO.  
7.5 MINUTE SERIES (TOPOGRAPHIC)



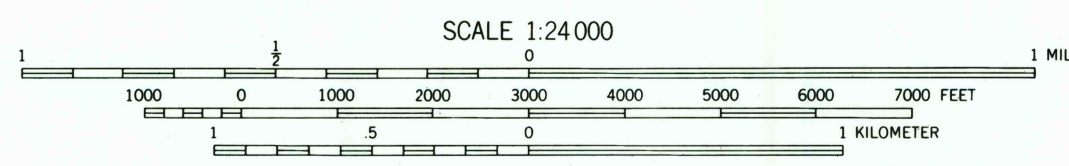
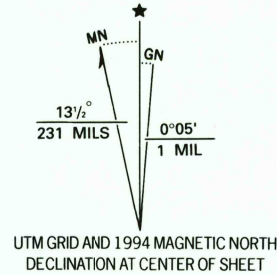
Mapped for the Army Map Service  
by the Tennessee Valley Authority  
Revised by the U.S. Geological Survey

Control by USGS, NOS/NOAA, and TVA  
Topography by photogrammetric methods from aerial photographs  
taken 1942. Field checked 1943

Projection and 10,000-foot grid ticks: New York coordinate  
system, east zone (transverse Mercator)  
1000-meter Universal Transverse Mercator grid ticks, zone 18, shown in blue  
1927 North American Datum (NAD 27)

North American Datum of 1983 (NAD 83) is shown by dashed corner ticks  
The values of the shift between NAD 27 and NAD 83 for 7.5-minute  
intersections are given in USGS Bulletin 1875

There may be private inholdings within the boundaries of  
the National or State reservations shown on this map



CONTOUR INTERVAL 20 FEET  
NATIONAL GEODETIC VERTICAL DATUM OF 1929

COMPLIES WITH U.S. GEOLOGICAL SURVEY STANDARDS FOR SPATIAL ACCURACY - CLASS 2  
FOR SALE BY U.S. GEOLOGICAL SURVEY  
DENVER, COLORADO 80225, OR RESTON, VIRGINIA 22092  
A FOLDER DESCRIBING TOPOGRAPHIC MAPS AND SYMBOLS IS AVAILABLE ON REQUEST

Revisions shown in purple and woodland compiled by the  
U.S. Geological Survey from aerial photographs taken 1988  
and other sources. Field checked 1989. Map edited 1994  
Information shown in purple may not meet USGS content  
standards and may conflict with previously mapped contours

ROAD CLASSIFICATION  
Primary highway, hard surface  
Secondary highway, hard surface  
Light-duty road, hard or improved surface  
Unimproved road  
Interstate Route  
U. S. Route  
State Route



MILFORD, N.Y.  
42074-E8-TF-024

1943  
REVISED 1994  
DMA 6069 III SE-SERIES V821

