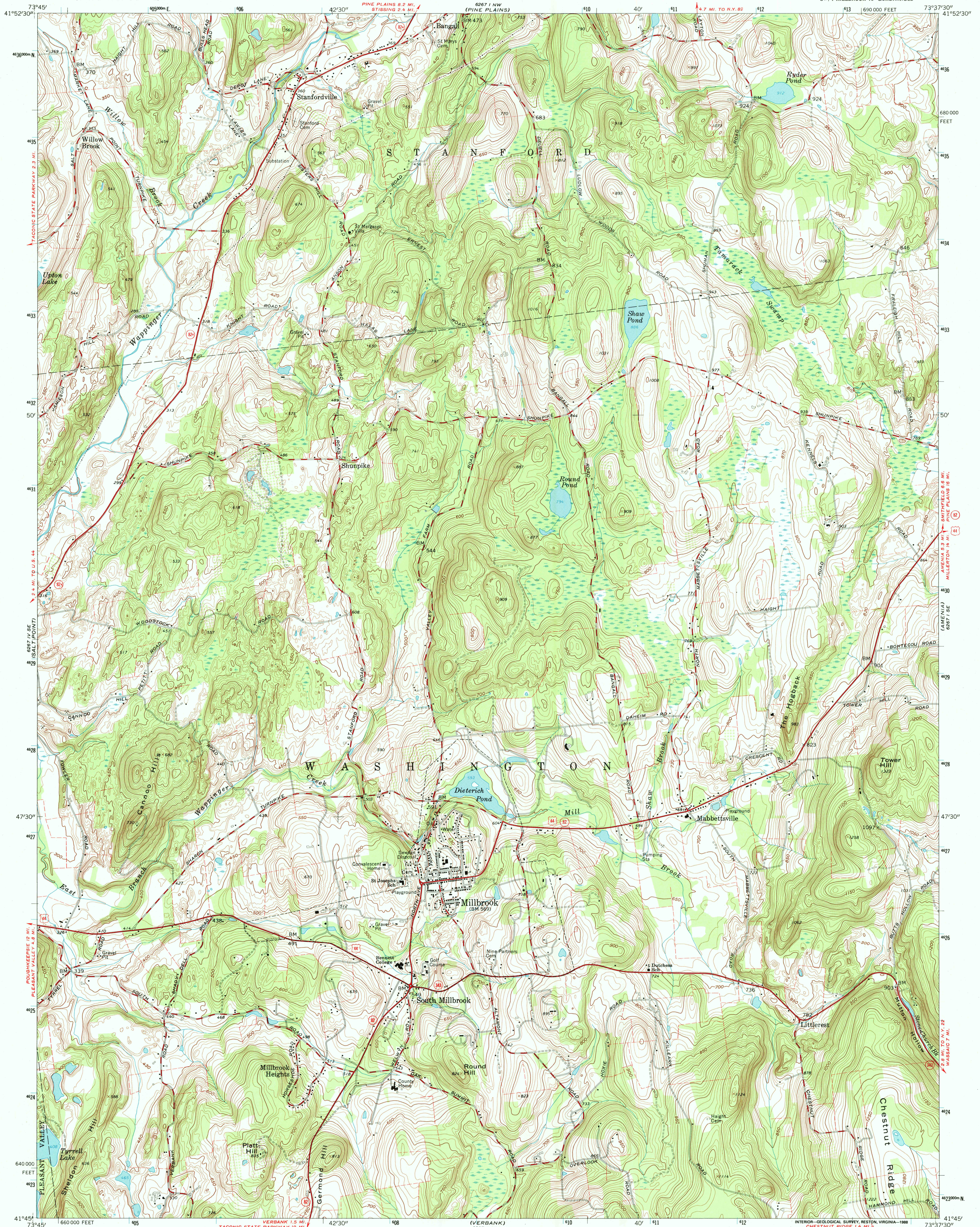


UNITED STATES
DEPARTMENT OF THE INTERIOR
GEOLOGICAL SURVEY

MILLBROOK QUADRANGLE
NEW YORK - DUTCHESS CO.
7.5 MINUTE SERIES (TOPOGRAPHIC)
SW 1/4 MILLBROOK 15' QUADRANGLE



Mapped, edited, and published by the Geological Survey

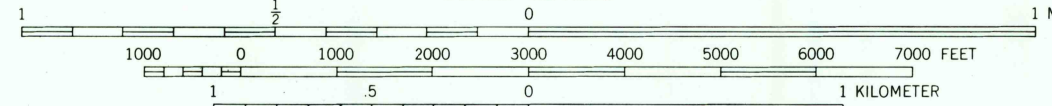
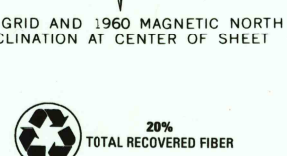
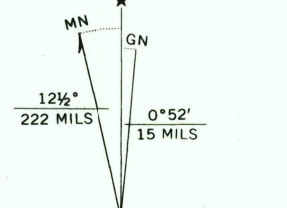
Control by USGS and USC&GS

Topography from aerial photographs by photogrammetric methods and by planetable surveys 1944. Aerial photographs taken 1942 Revised 1960

Polyconic projection. 1927 North American datum 10,000-foot grid based on New York coordinate system, east zone 1000-meter Universal Transverse Mercator grid ticks, zone 18, shown in blue

Fine red dashed lines indicate selected fence and field lines where generally visible on aerial photographs. This information is unchecked

To place on the predicted North American Datum 1983, move the projection lines 6 meters south and 36 meters west as shown by dashed corner ticks



CONTOUR INTERVAL 10 FEET
NATIONAL GEODETIC VERTICAL DATUM OF 1929

THIS MAP COMPLIES WITH NATIONAL MAP ACCURACY STANDARDS
FOR SALE BY U. S. GEOLOGICAL SURVEY, DENVER, COLORADO 80225, OR RESTON, VIRGINIA 22092
A FOLDER DESCRIBING TOPOGRAPHIC MAPS AND SYMBOLS IS AVAILABLE ON REQUEST



QUADRANGLE LOCATION

ROAD CLASSIFICATION
Heavy-duty ——— Light-duty ———
Medium-duty ——— Unimproved dirt ———
U. S. Route ——— State Route ———

MILLBROOK, N. Y.
SW 1/4 MILLBROOK 15' QUADRANGLE
41073-66-TF-024

1960

DMA 6267 1 SW - SERIES V821

RECEIVED

MAR 31 2000

USGS WFO

HISTORICAL MAP ARCHIVES

