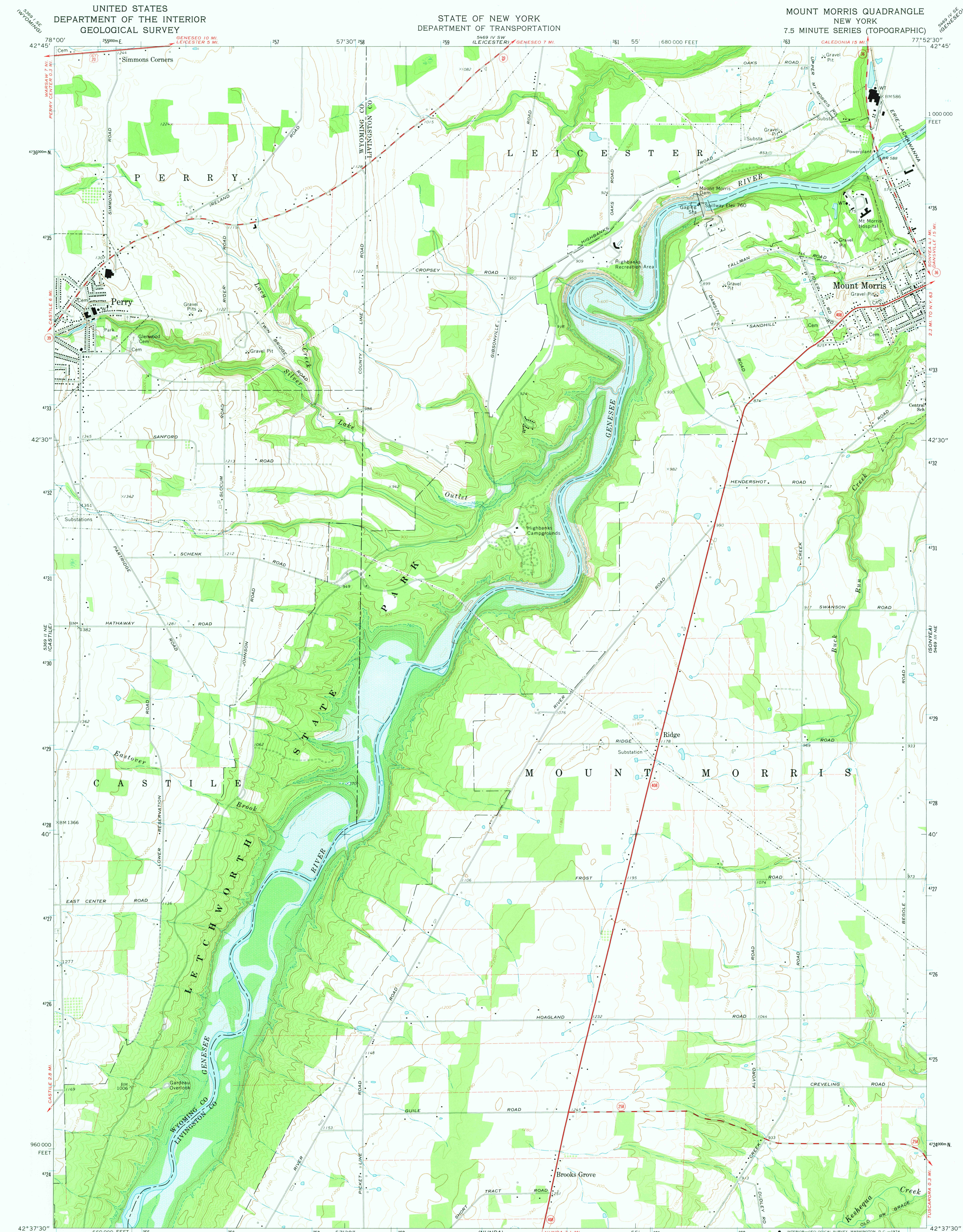


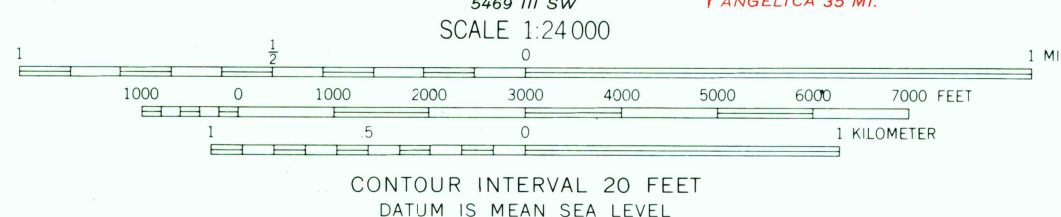
UNITED STATES
DEPARTMENT OF THE INTERIOR
GEOLOGICAL SURVEY

STATE OF NEW YORK
DEPARTMENT OF TRANSPORTATION

MOUNT MORRIS QUADRANGLE
NEW YORK
7.5 MINUTE SERIES (TOPOGRAPHIC)



Mapped, edited, and published by the Geological Survey
Control by USGS and USC&GS
Topography by photogrammetric methods from aerial photographs
taken 1972. Field checked 1972
Supersedes Army Map Service map dated 1943
Projection and 10,000-foot grid ticks: New York coordinate
system, west zone (transverse Mercator)
1000-meter Universal Transverse Mercator grid ticks,
zone 18, shown in blue. 1927 North American datum
Fine red dashed lines indicate selected fence and field lines where
generally visible on aerial photographs. This information is unchecked
Area covered by dashed light-blue pattern is subject to
controlled inundation



ROAD CLASSIFICATION
Primary highway, light-duty road, hard or improved surface
Secondary highway, hard surface
Unimproved road
Interstate Route
U. S. Route
State Route



THIS MAP COMPLIES WITH NATIONAL MAP ACCURACY STANDARDS
FOR SALE BY U. S. GEOLOGICAL SURVEY, WASHINGTON, D. C. 20242
A FOLDER DESCRIBING TOPOGRAPHIC MAPS AND SYMBOLS IS AVAILABLE ON REQUEST

MOUNT MORRIS, N. Y.
N4237.5-W7752.5/7.5

1972
AMS 5469 III NW-SERIES V821

MAY 23 1974

3665