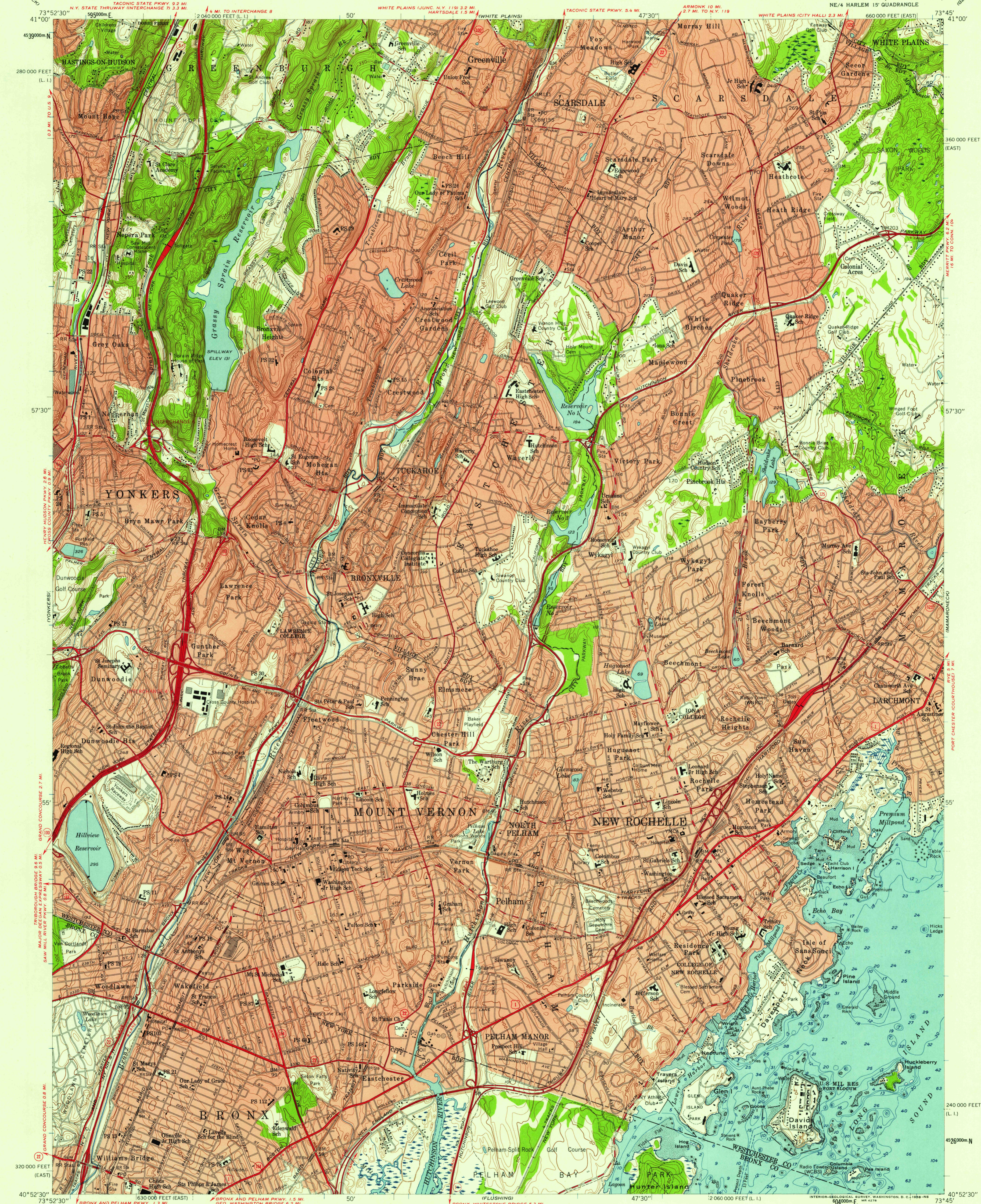


UNITED STATES
DEPARTMENT OF THE INTERIOR
GEOLOGICAL SURVEY

MOUNT VERNON QUADRANGLE
NEW YORK
7.5 MINUTE SERIES (TOPOGRAPHIC)
NE/4 HARLEM 15' QUADRANGLE



Mapped, edited, and published by the Geological Survey

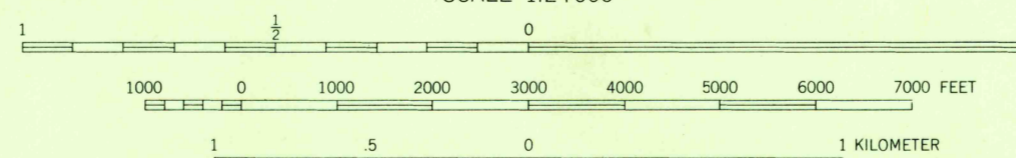
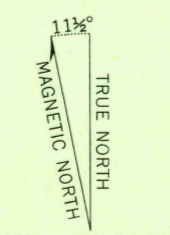
Control by USGS, USC&GS, USCE, and City of New York Board of Estimate and Apportionment

Culture and drainage in part compiled from aerial photographs taken 1953-1954. Topography by photogrammetric methods and by planimeter surveys. Field check 1956

Hydrography compiled from USC&GS charts 222 (1955) and 223 (1954)

Polyconic projection. 1927 North American datum 10 000-foot grids based on New York coordinate system, east zone and Long Island zone 1000-meter Universal Transverse Mercator grid ticks, zone 18, shown in blue

Red tint indicates areas in which only landmark buildings are shown



CONTOUR INTERVAL 10 FEET
DATUM IS MEAN SEA LEVEL
DEPTH CURVES AND SOUNDINGS IN FEET—DATUM IS MEAN LOW WATER
SHORELINE SHOWN REPRESENTS THE APPROXIMATE LINE OF MEAN HIGH WATER
THE MEAN RANGE OF TIDE IS APPROXIMATELY 13 FEET

THIS MAP COMPLIES WITH NATIONAL MAP ACCURACY STANDARDS
FOR SALE BY U. S. GEOLOGICAL SURVEY, WASHINGTON 25, D. C.
A FOLDER DESCRIBING TOPOGRAPHIC MAPS AND SYMBOLS IS AVAILABLE ON REQUEST



USGS
Historical File
Topographic Division

ROAD CLASSIFICATION
Heavy-duty ——— Light-duty ———
Medium-duty ——— Unimproved dirt ———
U.S. Route ——— State Route ———

MOUNT VERNON, N. Y.
NE/4 HARLEM 15' QUADRANGLE
N4052.5—W7345.7.5

1956

U.S.G.S.
TOPOGRAPHIC DIVISION
FILE COPY

NOV 18 1956

4850