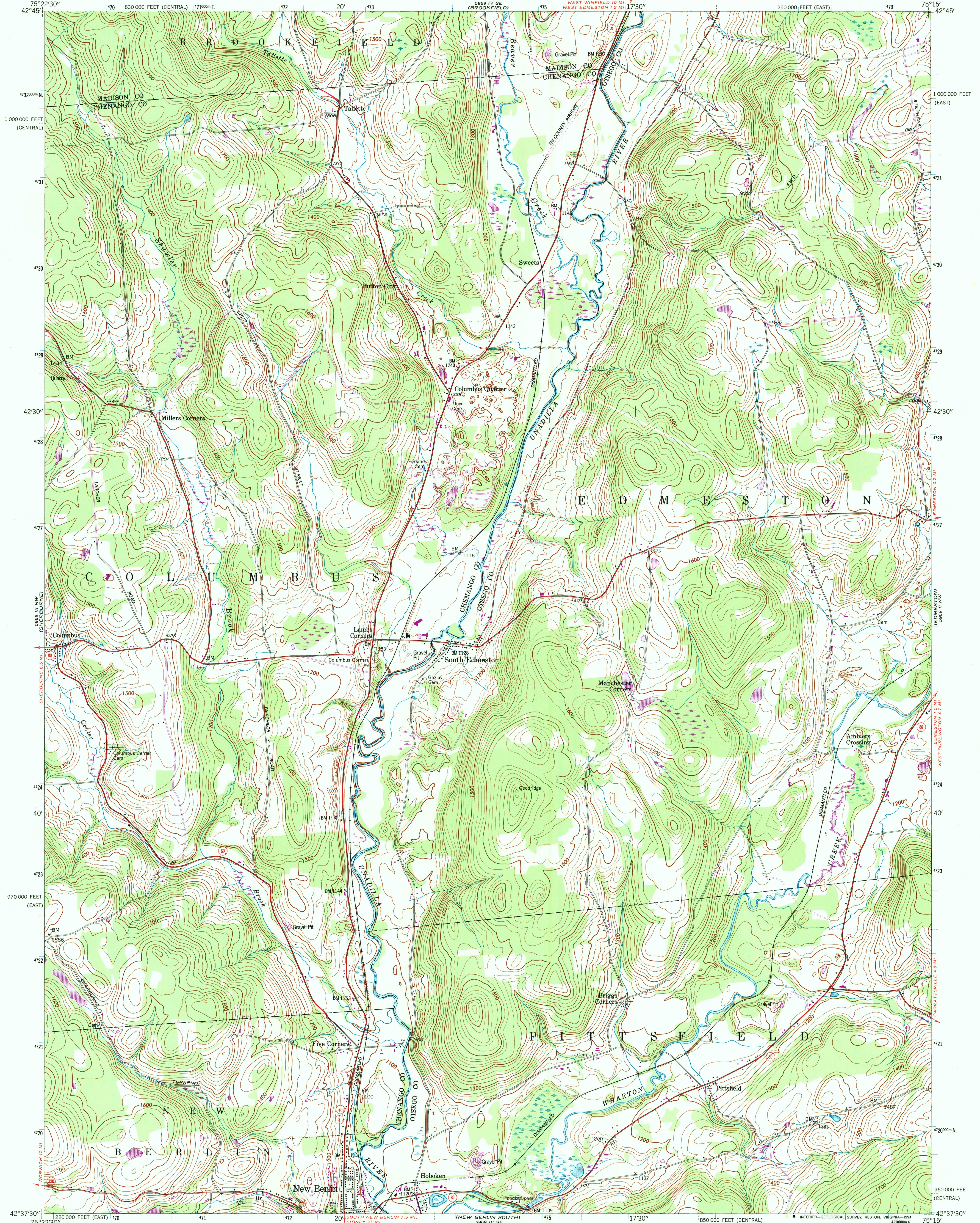


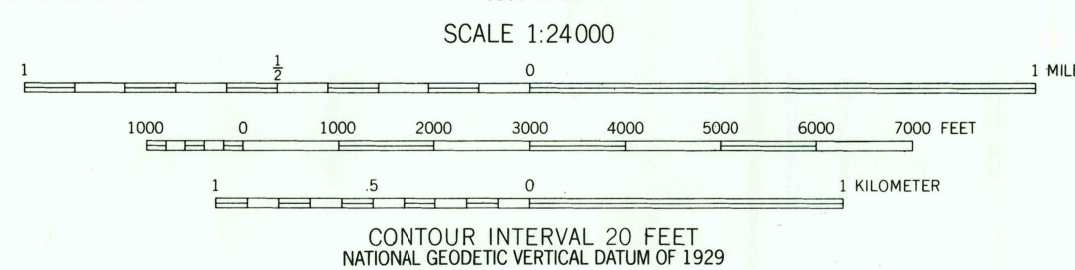
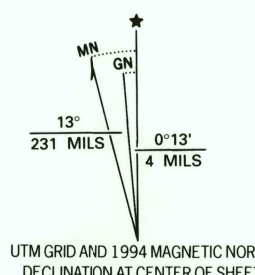
UNITED STATES  
DEPARTMENT OF THE INTERIOR  
GEOLOGICAL SURVEY

UNITED STATES  
DEPARTMENT OF THE ARMY  
CORPS OF ENGINEERS

NEW BERLIN NORTH QUADRANGLE  
NEW YORK  
7.5 MINUTE SERIES (TOPOGRAPHIC)  
NE/4 NEW BERLIN 15' QUADRANGLE



Mapped by the Army Map Service  
Revised by the United States Geological Survey  
Control by USGS, NOS/NOAA and TVA  
Topography by photogrammetric methods from aerial photographs  
taken 1942. Field checked 1943.  
Projection: New York coordinate system, east zone  
(transverse Mercator)  
10 000-foot grid ticks: New York coordinate system,  
east and central zones  
1000-meter Universal Transverse Mercator grid ticks, zone 18, shown in blue  
1927 North American Datum (NAD 27)  
North American Datum of 1983 (NAD 83) is shown by dashed corner ticks  
The values of the shift between NAD 27 and NAD 83 for 7.5-minute  
intersections are given in USGS Bulletin 1875



COMPLIES WITH U.S. GEOLOGICAL SURVEY STANDARDS FOR SPATIAL ACCURACY - CLASS 2  
FOR SALE BY U.S. GEOLOGICAL SURVEY  
DENVER, COLORADO 80225, OR RESTON, VIRGINIA 22092  
A FOLDER DESCRIBING TOPOGRAPHIC MAPS AND SYMBOLS IS AVAILABLE ON REQUEST



Revisions shown in purple and woodland compiled by the U.S. Geological  
Survey from aerial photographs taken 1988 and other sources. This  
information not field checked. Map edited 1994  
Information shown in purple may not meet USGS content  
standards and may conflict with previously mapped contours

ROAD CLASSIFICATION  
Primary highway, hard surface  
Secondary highway, hard surface  
Light-duty road, hard or improved surface  
Unimproved road  
Interstate Route  
U.S. Route  
State Route

NEW BERLIN NORTH, N.Y.  
42075-F3-TF-024  
1943  
REVISED 1994  
DMA 5969 III NE - SERIES V821

