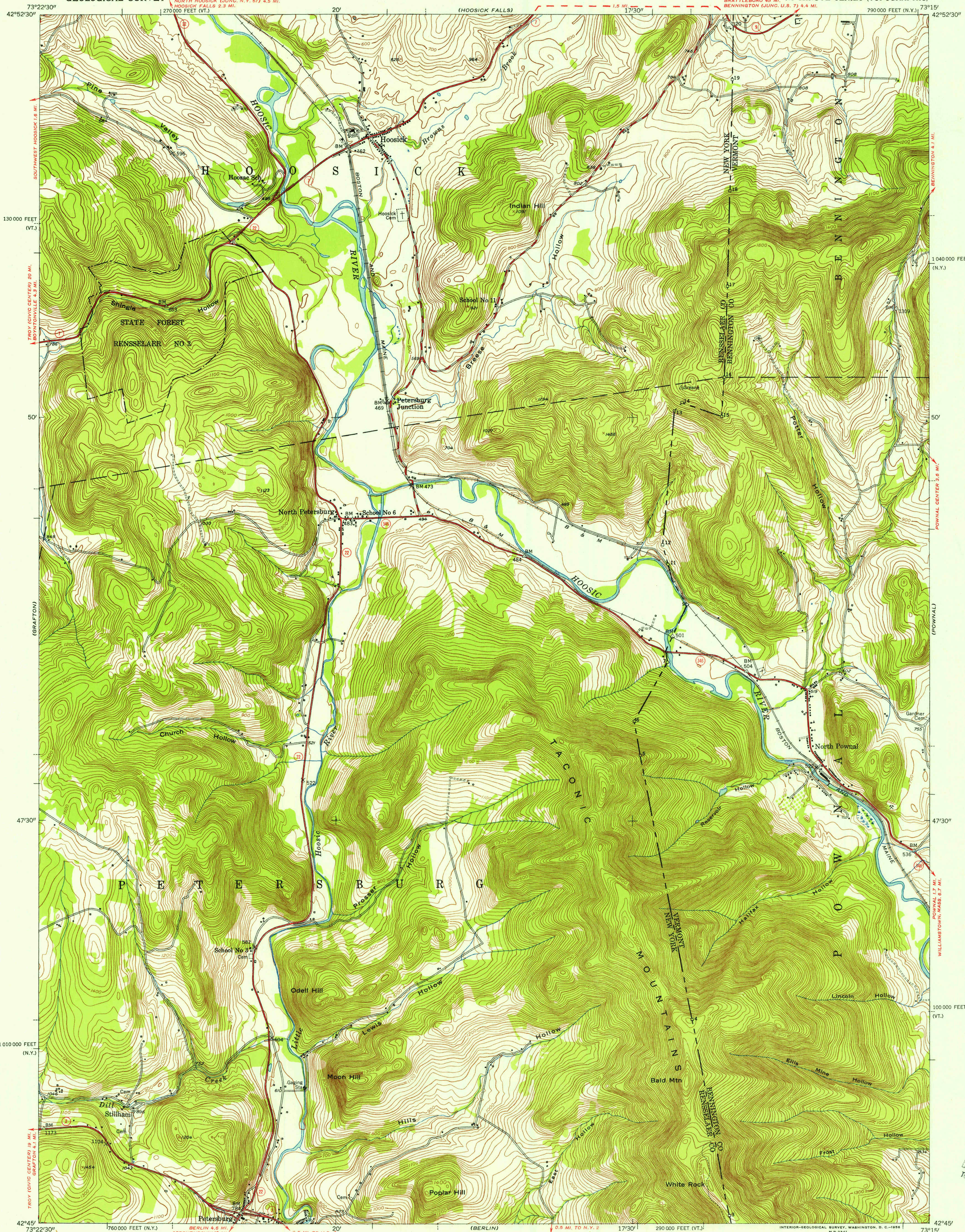
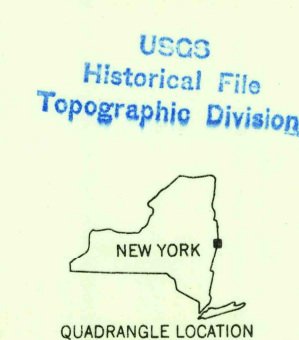
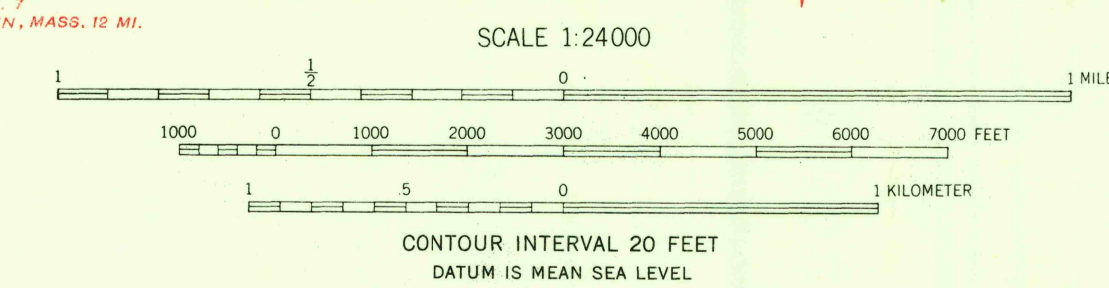


UNITED STATES  
DEPARTMENT OF THE INTERIOR  
GEOLOGICAL SURVEY

NORTH POWNAL QUADRANGLE  
NEW YORK-VERMONT  
7.5 MINUTE SERIES (TOPOGRAPHIC)



Maped, edited, and published by the Geological Survey  
Control by USGS and USC&GS  
Topography from aerial photographs by photogrammetric  
methods. Aerial photographs taken 1942. Field check 1943. Revised 1954  
Polyconic projection. 1927 North American datum  
10,000-foot grids based on New York coordinate system,  
east zone, and Vermont coordinate system



ROAD CLASSIFICATION			
Heavy-duty	Light-duty	U.S. Route	State Route
Medium-duty	Unimproved dirt		

NORTH POWNAL, N.Y.-VT.  
N 4245-W 7315/7.5  
1954

THIS MAP COMPLIES WITH NATIONAL MAP ACCURACY STANDARDS  
FOR SALE BY U. S. GEOLOGICAL SURVEY, WASHINGTON 25, D. C.  
A FOLDER DESCRIBING TOPOGRAPHIC MAPS AND SYMBOLS IS AVAILABLE ON REQUEST

U.S.G.S.  
FILE COPY  
TOPOGRAPHIC DIVISION

U.S.G.S.  
FILE COPY  
TOPOGRAPHIC DIVISION