

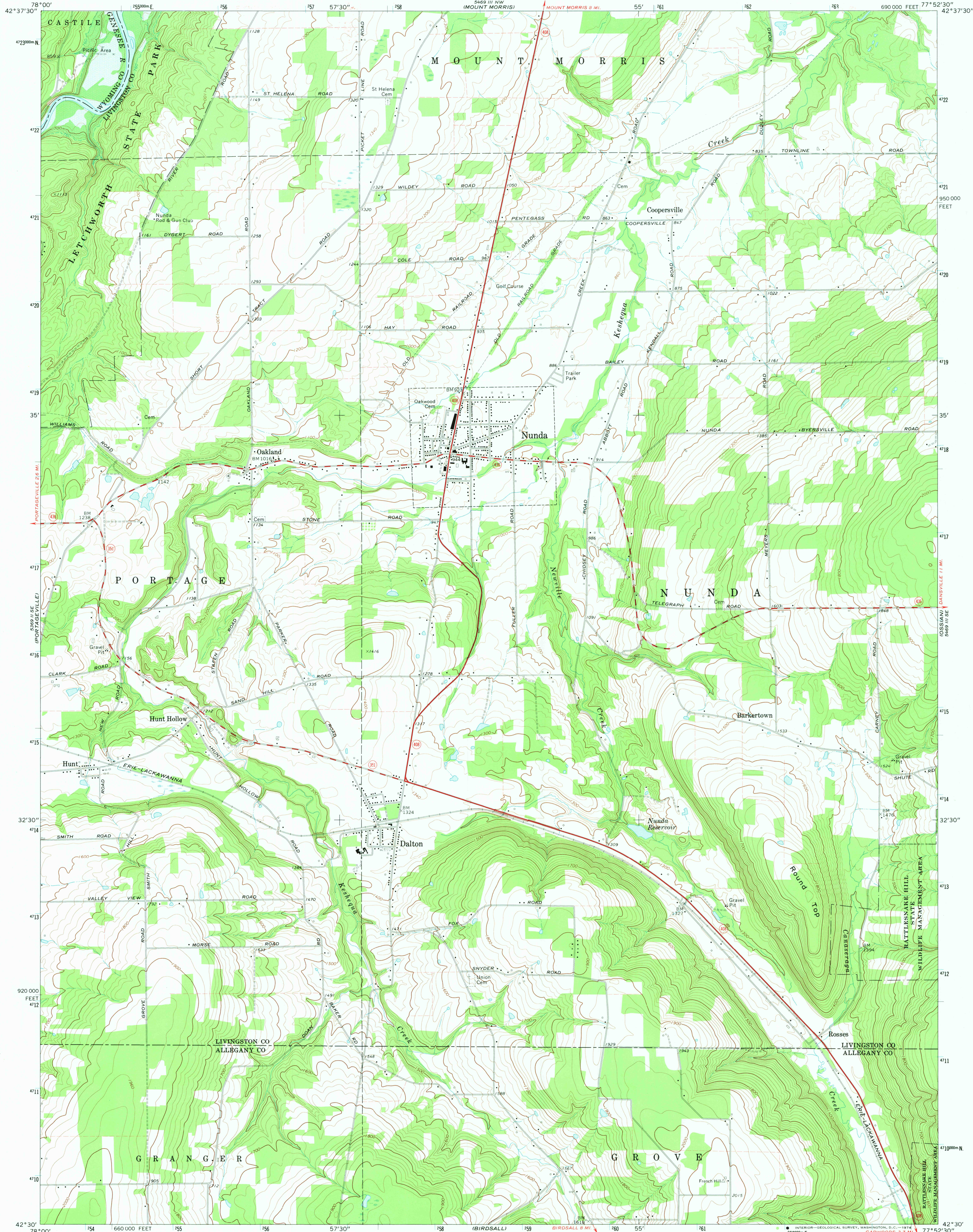
5469 III SW  
(CASTLE)

UNITED STATES  
DEPARTMENT OF THE INTERIOR  
GEOLOGICAL SURVEY

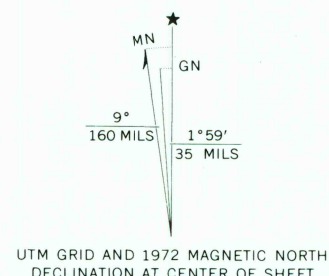
STATE OF NEW YORK  
DEPARTMENT OF TRANSPORTATION

NUNDA QUADRANGLE  
NEW YORK  
7.5 MINUTE SERIES (TOPOGRAPHIC)

5469 III NE  
(CONVERSE)



Mapped, edited, and published by the Geological Survey  
Control by USGS and USC&GS  
Topography by photogrammetric methods from aerial  
photographs taken 1972. Field checked 1972  
Supersedes Army Map Service map dated 1943  
Projection and 10,000-foot grid ticks: New York coordinate  
system, west zone (transverse Mercator)  
1000-meter Universal Transverse Mercator grid ticks,  
zone 18, shown in blue. 1927 North American datum  
Area covered by dashed light-blue pattern is  
subject to controlled inundation by Mount Morris Dam  
Fine red dashed lines indicate selected fence and field lines where  
generally visible on aerial photographs. This information is unchecked



THIS MAP COMPLIES WITH NATIONAL MAP ACCURACY STANDARDS  
FOR SALE BY U.S. GEOLOGICAL SURVEY, WASHINGTON, D.C. 20242  
A FOLDER DESCRIBING TOPOGRAPHIC MAPS AND SYMBOLS IS AVAILABLE ON REQUEST



ROAD CLASSIFICATION	
Primary highway, hard surface	Light-duty road, hard or improved surface
Secondary highway, hard surface	Unimproved road
Interstate Route	U.S. Route
	State Route

NUNDA, N.Y.  
N4230-W7752.5/7.5

MAR 22 1974

USGS  
Historical File  
Topographic Division

1972  
AMS 5469 III SW—SERIES V821

3745