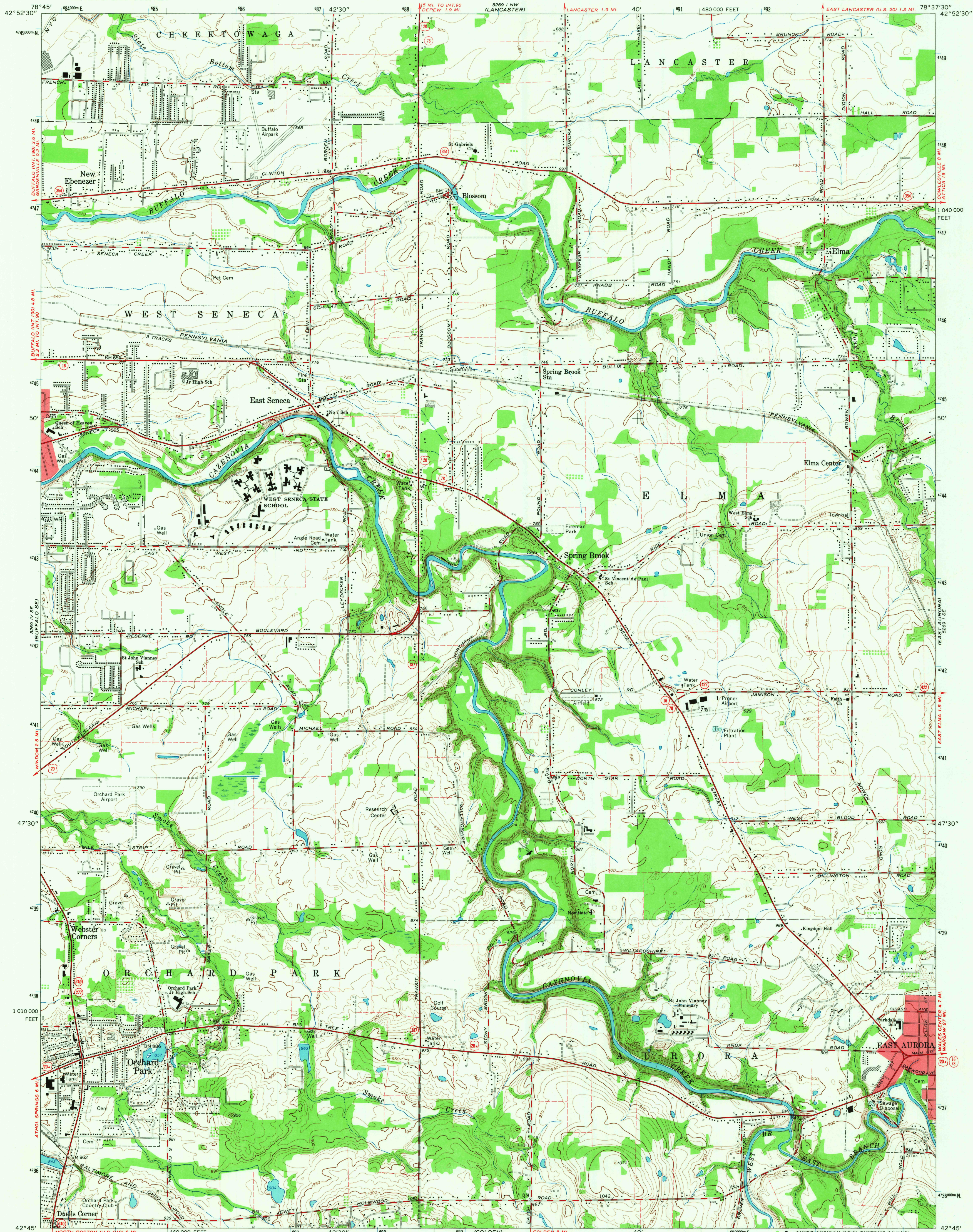
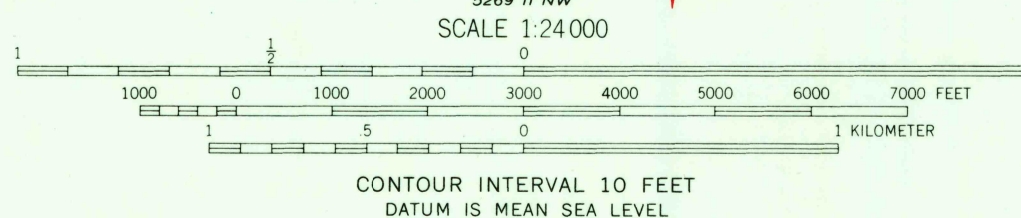


UNITED STATES
DEPARTMENT OF THE INTERIOR
GEOLOGICAL SURVEY

ORCHARD PARK QUADRANGLE
NEW YORK—ERIE CO.
7.5 MINUTE SERIES (TOPOGRAPHIC)
SW 1/4 DEPEW 15' QUADRANGLE



Mapped, edited, and published by the Geological Survey
in cooperation with New York Department of Public Works
Control by USGS, USC&GS, and USCE
Planimetry compiled by U. S. Corps of Engineers
from aerial photographs taken 1942. Topography by
planimetry surveys 1948. Revised 1965
Polyconic projection. 1927 North American datum
10,000 foot grid based on New York coordinate system, west zone
1000-meter Universal Transverse Mercator grid ticks,
zone 17, shown in blue
Fine red dashed lines indicate selected fence and field lines where
generally visible on aerial photographs. This information is unchecked
Red tint indicates areas in which only landmark buildings are shown



USGS
Historical File
Topographic Division
QUADRANGLE LOCATION
NEW YORK

ROAD CLASSIFICATION
Heavy-duty ——— Light-duty ———
Medium-duty ——— Unimproved dirt ———
U. S. Route ——— State Route ———

ORCHARD PARK, N. Y.
SW 1/4 DEPEW 15' QUADRANGLE
N4245—W7837.5/7.5
1965
AMS 5269 1 SW—SERIES V821

U.S.G.S.
TOPOGRAPHIC DIVISION
3695
APR 25 1967