

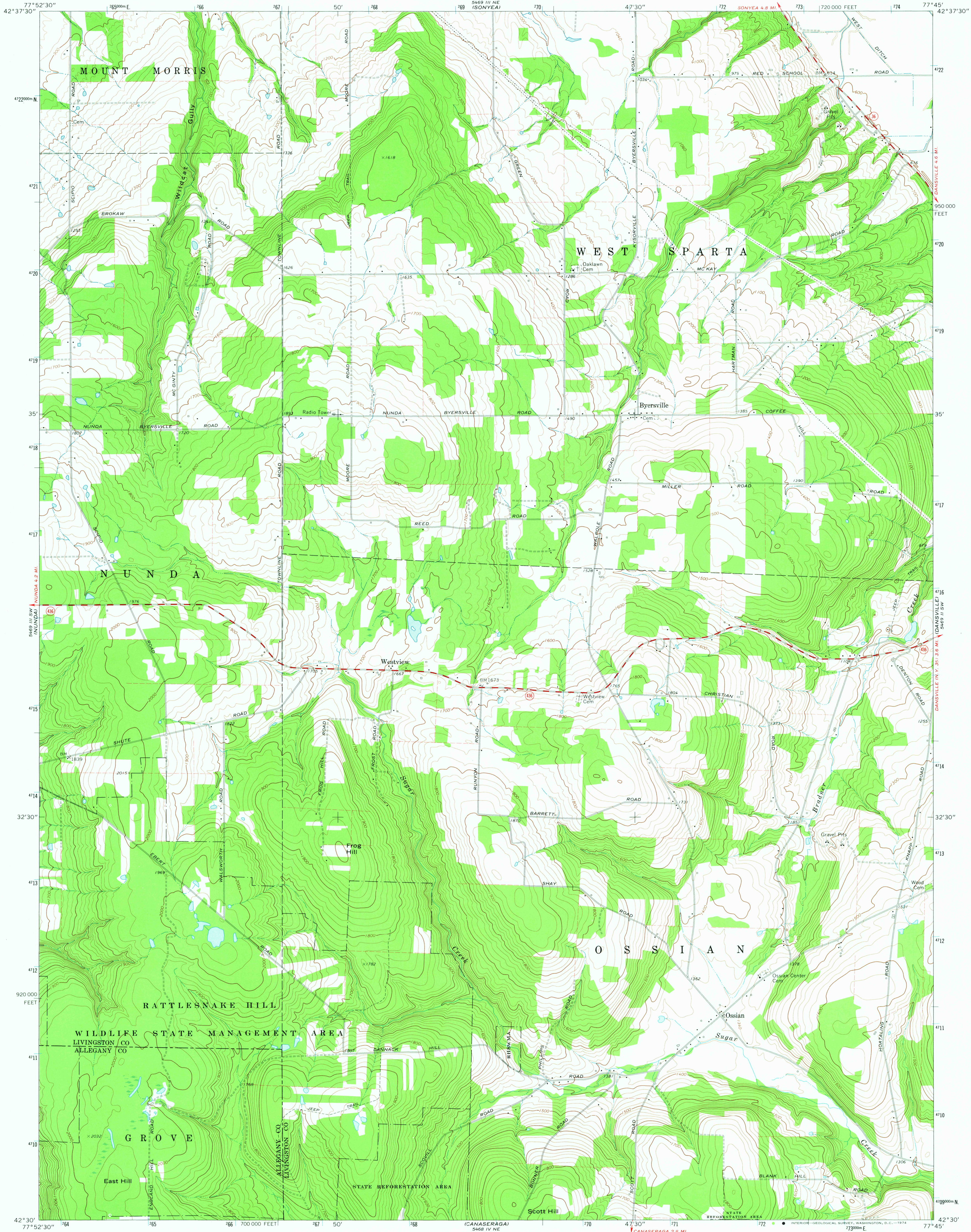
5469 III NW
(MOUNT MORRIS)

UNITED STATES
DEPARTMENT OF THE INTERIOR
GEOLOGICAL SURVEY

STATE OF NEW YORK
DEPARTMENT OF TRANSPORTATION

OSSIAN QUADRANGLE
NEW YORK
7.5 MINUTE SERIES (TOPOGRAPHIC)

5469 I NE
(CONESBURG)



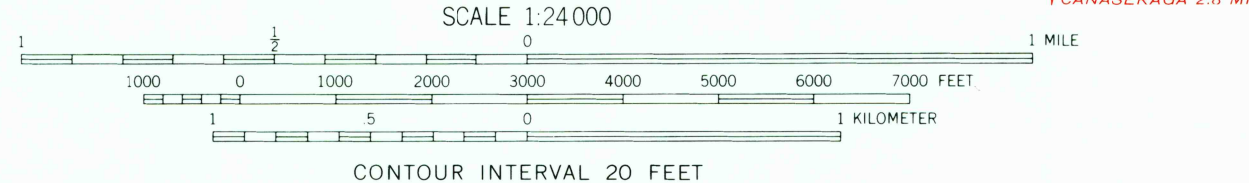
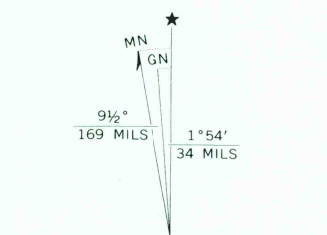
Mapped, edited, and published by the Geological Survey

Control by USGS and USC&GS

Topography by photogrammetric methods from aerial
photographs taken 1972. Field checked 1972.
Supersedes Army Map Service map dated 1943

Projection and 10,000-foot grid ticks: New York coordinate
system, west zone (transverse Mercator)
1000 meter Universal Transverse Mercator grid ticks,
zone 18, shown in blue. 1927 North American datum

Fine red dashed lines indicate selected fence and field lines where
generally visible on aerial photographs. This information is unchecked



- ROAD CLASSIFICATION
- | | |
|------------------------------------|----------------------------------------------|
| Primary highway,
hard surface | Light-duty road, hard or
improved surface |
| Secondary highway,
hard surface | Unimproved road |
| Interstate Route | U. S. Route |
| | State Route |

THIS MAP COMPLIES WITH NATIONAL MAP ACCURACY STANDARDS
FOR SALE BY U. S. GEOLOGICAL SURVEY, WASHINGTON, D. C. 20542
A FOLDER DESCRIBING TOPOGRAPHIC MAPS AND SYMBOLS IS AVAILABLE ON REQUEST

USGS
Historical File
Topographic Division

OSSIAN, N. Y.
N4230—W7745/7.5

1972

AMS 5469 III SE—SERIES V821

MAR 26 1974
3210