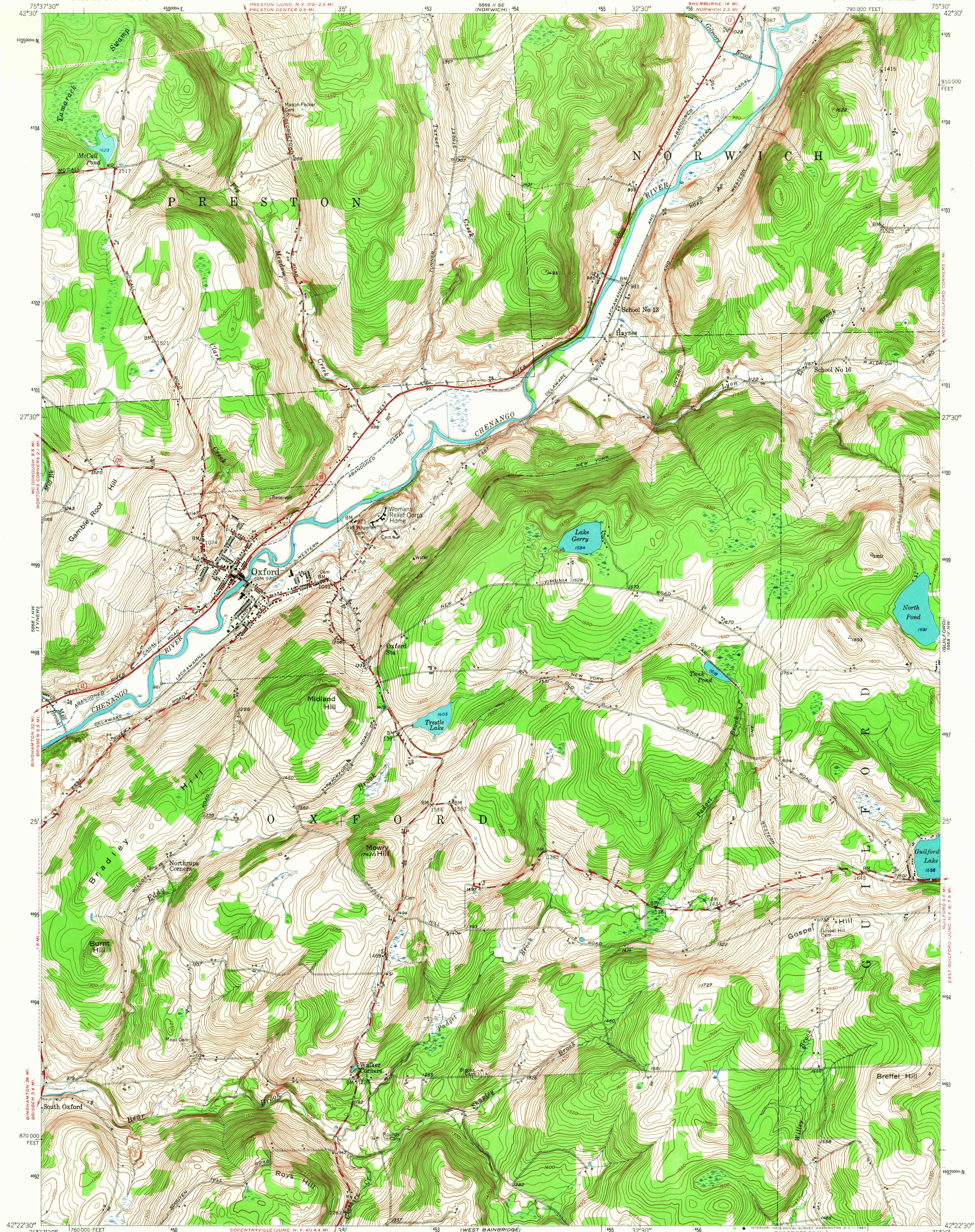
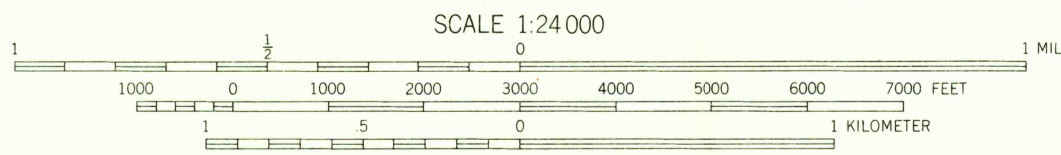
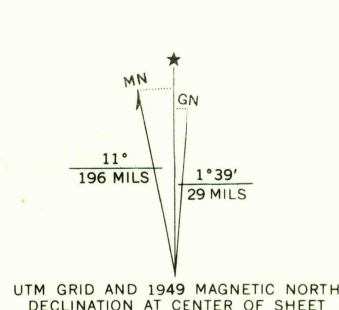


UNITED STATES  
DEPARTMENT OF THE INTERIOR  
GEOLOGICAL SURVEY

OXFORD QUADRANGLE  
NEW YORK-CHENANGO CO.  
7.5 MINUTE SERIES (TOPOGRAPHIC)  
NE/4 OXFORD 15' QUADRANGLE



Maped, edited, and published by the Geological Survey  
Control by USGS, USC&GS, and USCE  
Topography from aerial photographs by multiplex methods  
Aerial photographs taken 1944. Field check 1949  
Polyconic projection. 1927 North American datum  
10,000-foot grid based on New York coordinate system,  
central zone  
1000-meter Universal Transverse Mercator grid ticks,  
zone 18, shown in blue



CONTOUR INTERVAL 10 FEET  
DATUM IS MEAN SEA LEVEL

THIS MAP COMPLIES WITH NATIONAL MAP ACCURACY STANDARDS  
FOR SALE BY U. S. GEOLOGICAL SURVEY, WASHINGTON, D. C. 20242  
A FOLDER DESCRIBING TOPOGRAPHIC MAPS AND SYMBOLS IS AVAILABLE ON REQUEST

USGS  
Historical File  
Topographic Division

ROAD CLASSIFICATION  
Heavy-duty... Lane 5 Lane 6 Light-duty...  
Medium-duty... Lane 5 Lane 6 Unimproved dirt...  
U. S. Route State Route

U.S.G.S.  
FILE COPY  
TOPOGRAPHIC DIVISION

OXFORD, N. Y.  
NE/4 OXFORD 15' QUADRANGLE  
N4222.5-W7530.7.5  
1949  
AMS 5868 1 NE-SERIES V821

2205  
AUG 1 1967