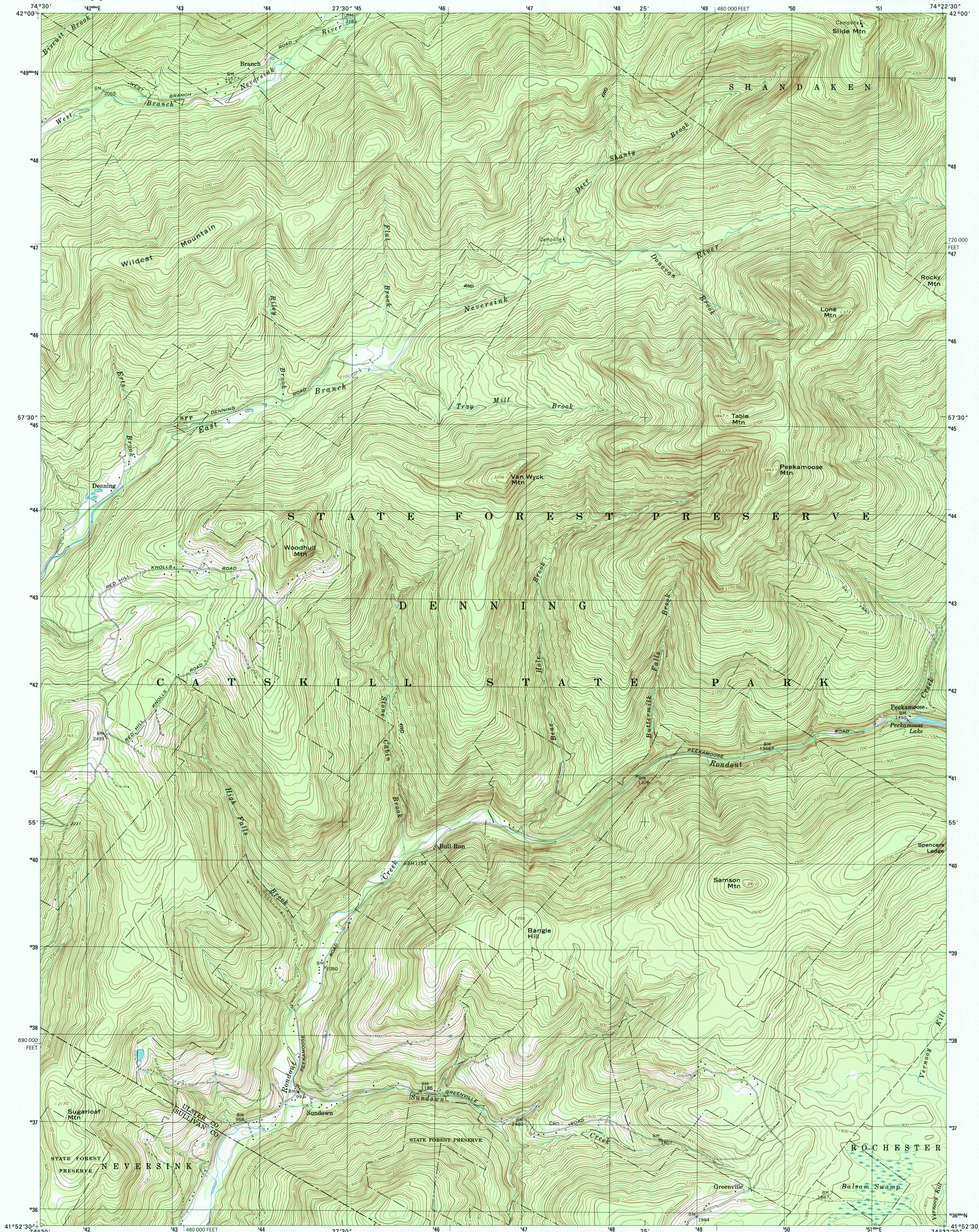


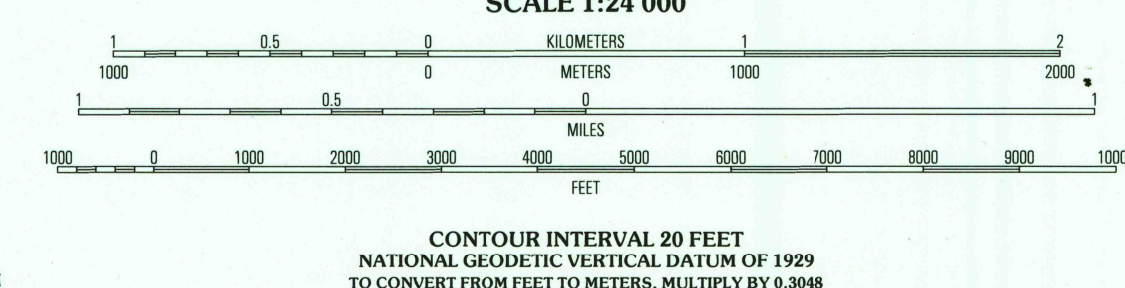
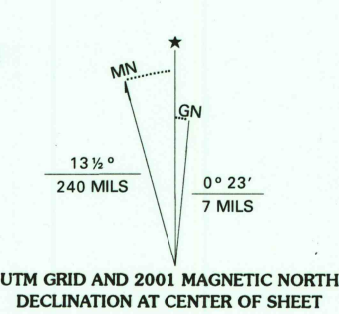


U.S. DEPARTMENT OF THE INTERIOR
U.S. GEOLOGICAL SURVEY

PEEKAMOOSE MTN QUADRANGLE
NEW YORK
7.5-MINUTE SERIES (TOPOGRAPHIC)



Produced by the United States Geological Survey
Derived from imagery taken 1968 and other sources. Photosinspected using imagery taken 1997; no major culture or drainage changes observed. Survey control current as of 1969
Boundaries verified 2000
North American Datum of 1927 (NAD 27). Projection and 10 000-foot ticks: New York coordinate system, east zone (transverse Mercator)
1000-meter Universal Transverse Mercator grid, zone 18
North American Datum of 1983 (NAD 83) is shown by dashed corner ticks. The values of the shift between NAD 27 and NAD 83 for 7.5-minute intersections are obtainable from National Geodetic Survey NADCON software
There may be private inholdings within the boundaries of the National or State reservations shown on this map

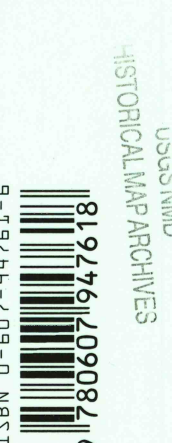


ROAD CLASSIFICATION			
Primary highway	hard surface	Light-duty road, hard or improved surface	
Secondary highway	hard surface	Unimproved road	
		Interstate Route	U.S. Route
			State Route

1	2	3
4	5	6
7	8	

1 Seager
2 Shandaken
3 Phoenicia
4 Claryville
5 West Shakan
6 Grahamsville
7 Rondout Reservoir
8 Kerhonkson

PEEKAMOOSE MTN, NY
1997
NIMA 6167 IV NW-SERIES V821



RECEIVED
APR 30 2001
USGS/WMU
HISTORICAL MAP ARCHIVES

FOR SALE BY U.S. GEOLOGICAL SURVEY, P.O. BOX 25286, DENVER, COLORADO 80225
A FOLDER DESCRIBING TOPOGRAPHIC MAPS AND SYMBOLS IS AVAILABLE ON REQUEST