

UNITED STATES
DEPARTMENT OF THE INTERIOR
GEOLOGICAL SURVEY

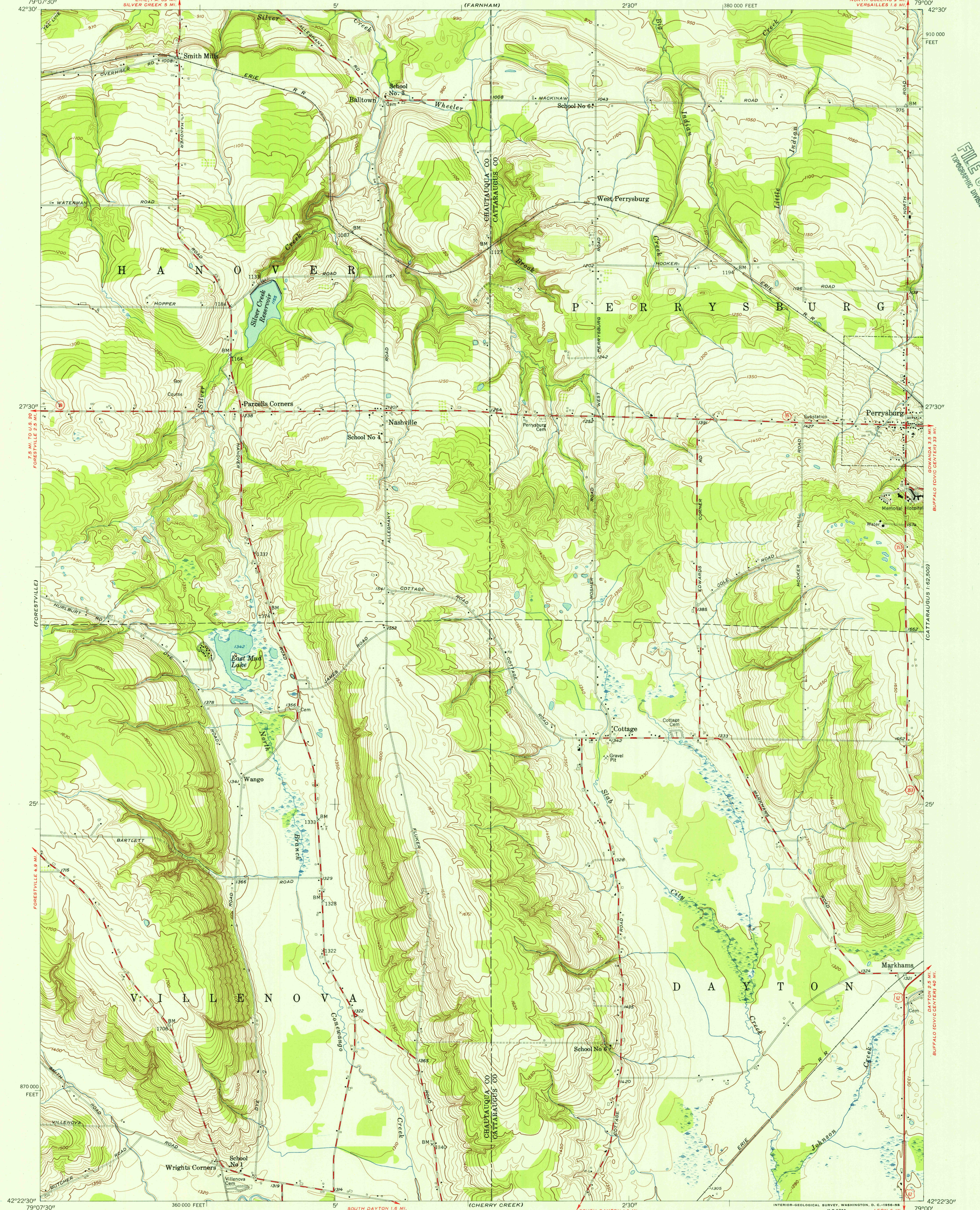
PERRYSBURG QUADRANGLE
NEW YORK
7.5 MINUTE SERIES (TOPOGRAPHIC)

NE 1/4 CHERRY CREEK 15' QUADRANGLE

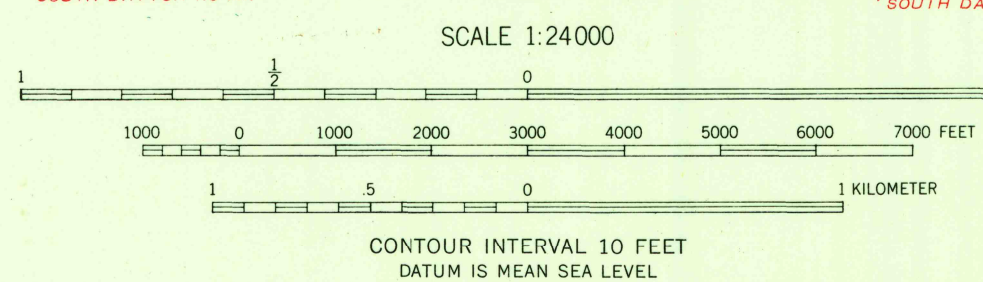
NORTH COLLINS 8 MI.
VERSAILLES 1.6 MI.

(NORTH COLLINS)

U.S.G.S.
FILE COPY
TOPOGRAPHIC DIVISION



Mapped, edited, and published by the Geological Survey
Control by USGS, USC&GS, USED, and USLS
Topography from aerial photographs by photogrammetric methods.
Aerial photographs taken 1952. Field check 1954
Polyconic projection. 1927 North American datum
10,000-foot grid based on New York coordinate system,
west zone
Unchecked elevations are shown in brown



USGS
Historical File
Topographic Division

ROAD CLASSIFICATION
Heavy-duty ——— Light-duty ———
Medium-duty ——— Unimproved dirt ———
U. S. Route ——— State Route ———

PERRYSBURG, N. Y.
NE 1/4 CHERRY CREEK 15' QUADRANGLE
N 4222.5—W 7900/7.5

1954

JUL 3 1956

THIS MAP COMPLIES WITH NATIONAL MAP ACCURACY STANDARDS
FOR SALE BY U. S. GEOLOGICAL SURVEY, WASHINGTON 25, D. C.
A FOLDER DESCRIBING TOPOGRAPHIC MAPS AND SYMBOLS IS AVAILABLE ON REQUEST