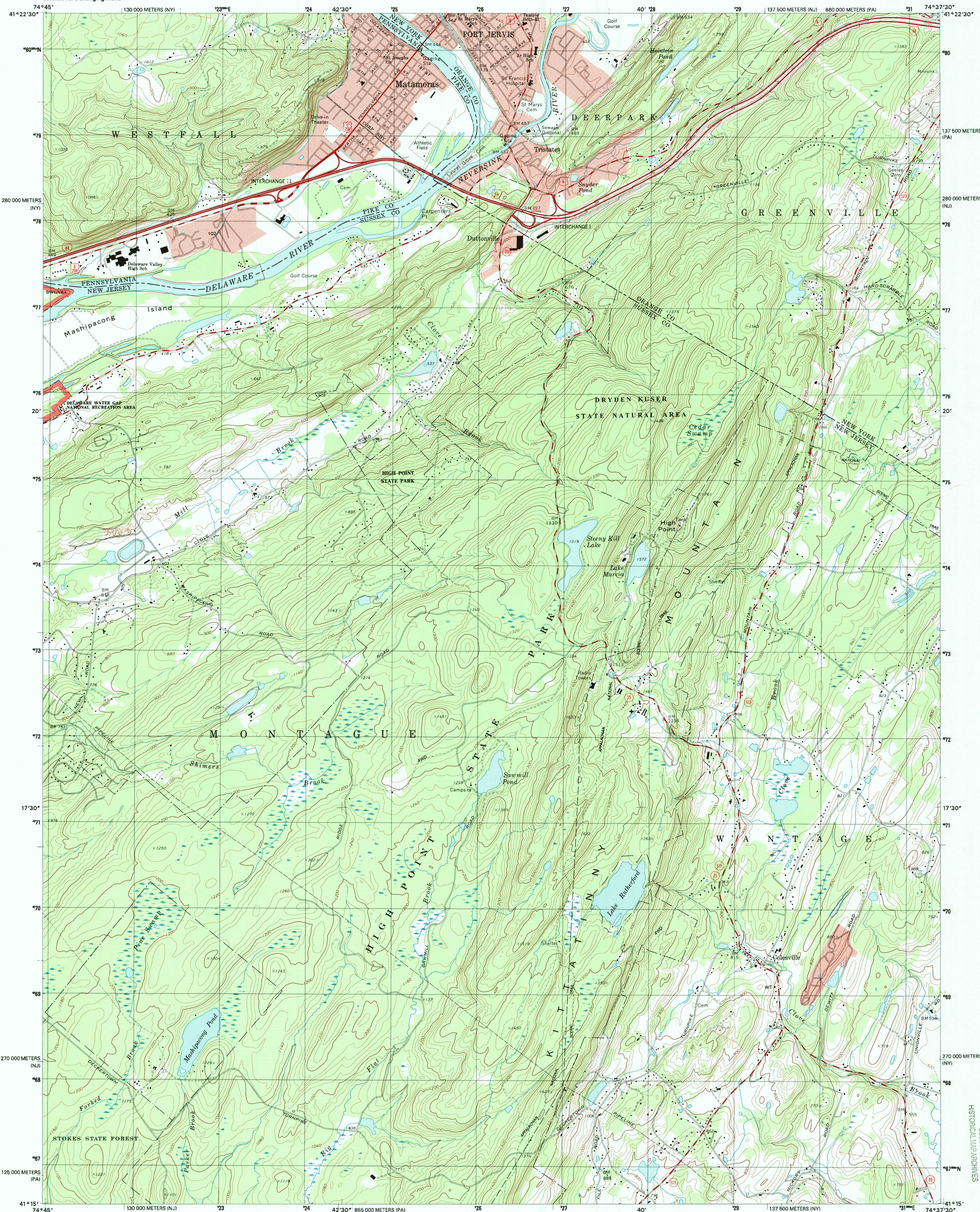


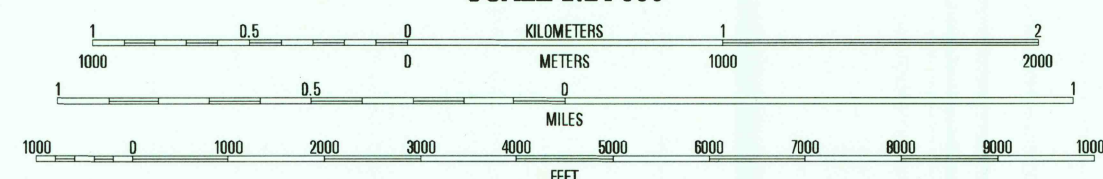
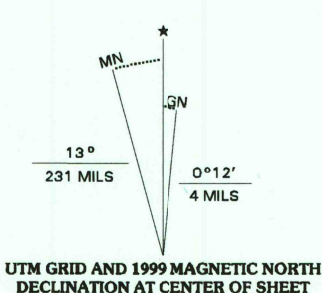


U.S. DEPARTMENT OF THE INTERIOR  
U.S. GEOLOGICAL SURVEY

PORT JERVIS SOUTH QUADRANGLE  
NEW YORK-NEW JERSEY-PENNSYLVANIA  
7.5-MINUTE SERIES (TOPOGRAPHIC)



Produced by the United States Geological Survey  
Topography compiled 1968. Planimetry derived from imagery taken 1995 and other sources. Survey control current as of 1969  
North American Datum of 1983 (NAD 83). Projection and 1 000-meter grid: Universal Transverse Mercator, zone 18  
2 500-meter ticks: New Jersey Coordinate System of 1983, New York Coordinate System of 1983 (east zone), and Pennsylvania Coordinate System of 1983 (north zone)  
North American Datum of 1927 (NAD 27) is shown by dashed corner ticks. The values of the shift between NAD 83 and NAD 27 for 7.5-minute intersections are obtainable from National Geographic Survey NADCON software  
There may be private inholdings within the boundaries of the National or State reservations shown on this map  
Landmark buildings verified 1969



CONTOUR INTERVAL 20 FEET  
NATIONAL GEODETIC VERTICAL DATUM OF 1929  
TO CONVERT FROM FEET TO METERS, MULTIPLY BY 0.3048

THIS MAP COMPLIES WITH NATIONAL MAP ACCURACY STANDARDS  
FOR SALE BY U.S. GEOLOGICAL SURVEY, P.O. BOX 25286, DENVER, COLORADO 80225  
A FOLDER DESCRIBING TOPOGRAPHIC MAPS AND SYMBOLS IS AVAILABLE ON REQUEST



QUADRANGLE LOCATION

|   |   |   |                     |
|---|---|---|---------------------|
| 1 | 2 | 3 | 1 Pond Eddy         |
| 4 | 5 | 6 | 2 Port Jervis North |
| 7 | 8 | 9 | 3 Otisville         |
|   |   |   | 4 Milford           |
|   |   |   | 5 Unionville        |
|   |   |   | 6 Calver Gap        |
|   |   |   | 7 Branchville       |
|   |   |   | 8 Hamburg           |

ROAD CLASSIFICATION  
Primary highway  
hard surface .....  
Secondary highway  
hard surface .....  
Unimproved road .....  
Light-duty road, hard or  
improved surface .....  
Unimproved road .....  
Interstate Route  
U.S. Route  
State Route

PORT JERVIS SOUTH, NY-NJ-PA  
1995

NIMA 60661 SW-SERIES V822

RECEIVED  
NOV 3 0 2000  
HISTORICAL MAP ARCHIVES  
USGS NHD  
05456814098416  
158N 0-607-69757-0