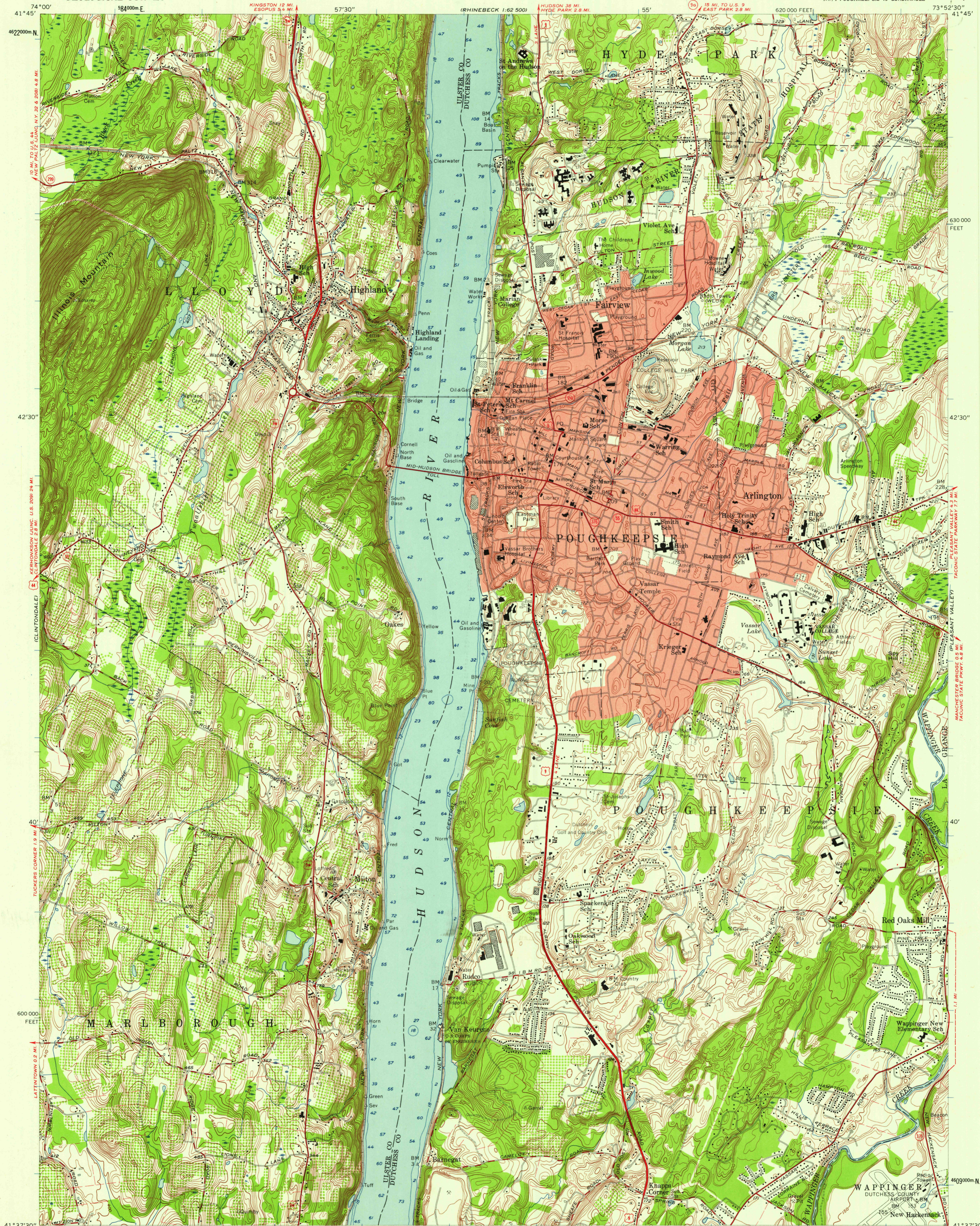


UNITED STATES
DEPARTMENT OF THE INTERIOR
GEOLOGICAL SURVEY

POUGHKEEPSIE QUADRANGLE
NEW YORK
7.5 MINUTE SERIES (TOPOGRAPHIC)
NW/4 POUGHKEEPSIE 15' QUADRANGLE



Maped, edited, and published by the Geological Survey
Control by USGS and USC&GS
Topography from aerial photographs by photogrammetric methods
Aerial photographs taken 1955. Field check 1957
Hydrography compiled from USC&GS chart 283 (1954)
Polyconic projection. 1927 North American datum
10,000-foot grid based on New York coordinate system,
east zone
1000-meter Universal Transverse Mercator grid ticks,
zone 18, shown in blue
Fine red dashed lines indicate selected fence and field lines
visible on aerial photographs. This information is unchecked
Red tint indicates area in which only
landmark buildings are shown
Unchecked elevations are shown in brown

TRUE NORTH
MAGNETIC NORTH
APPROXIMATE MEAN
DECLINATION, 1957

SCALE 1:24000
1000 0 1000 2000 3000 4000 5000 6000 7000 FEET
1 0 1 KILOMETER
CONTOUR INTERVAL 10 FEET
DATUM IS MEAN SEA LEVEL
DEPTH CURVES AND SOUNDINGS IN FEET—DATUM IS MEAN LOW WATER
SHORELINE SHOWN REPRESENTS THE APPROXIMATE LINE OF MEAN HIGH WATER
THE MEAN RANGE OF TIDE IS APPROXIMATELY 3.1 FEET
THIS MAP COMPLIES WITH NATIONAL MAP ACCURACY STANDARDS
FOR SALE BY U. S. GEOLOGICAL SURVEY, WASHINGTON 25, D. C.
A FOLDER DESCRIBING TOPOGRAPHIC MAPS AND SYMBOLS IS AVAILABLE ON REQUEST

USGS
Historical File
Topographic Division
NEW YORK
QUADRANGLE LOCATION

ROAD CLASSIFICATION
Heavy-duty ——— Light-duty ———
Medium-duty ——— Unimproved dirt ———
U. S. Route ——— State Route ———

U.S.G.S.
FILE COPY
TOPOGRAPHIC DIVISION

POUGHKEEPSIE, N. Y.
NW/4 POUGHKEEPSIE 15' QUADRANGLE
N4137.5—W7352.5/7.5

1957

FEB 5 1959

3745