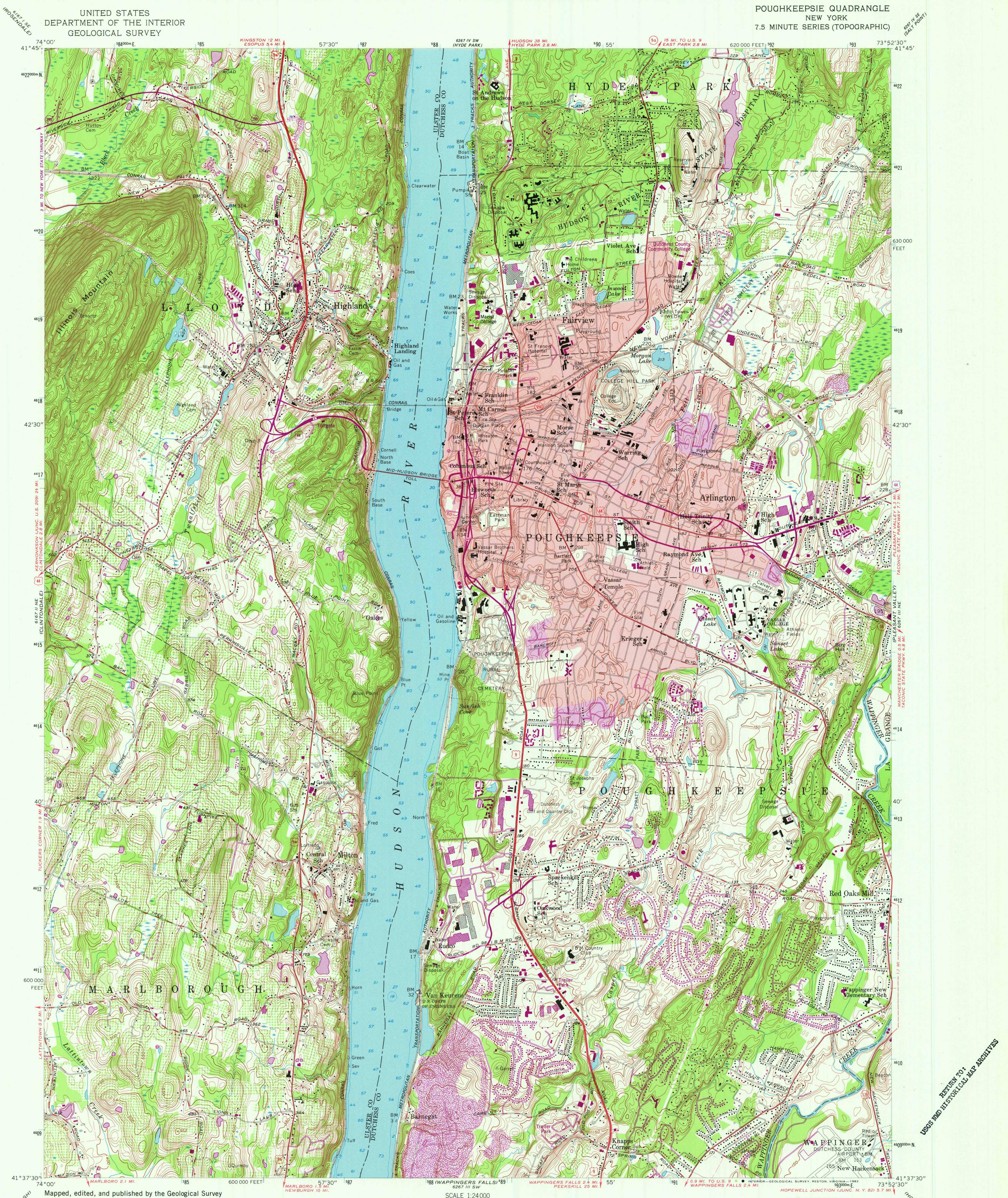


UNITED STATES
DEPARTMENT OF THE INTERIOR
GEOLOGICAL SURVEY

POUGHKEEPSIE QUADRANGLE
NEW YORK
7.5 MINUTE SERIES (TOPOGRAPHIC)



Mapped, edited, and published by the Geological Survey
Control by USGS and NOS/NOAA
Topography by photogrammetric methods from aerial photographs
taken 1955. Field checked 1957
Selected hydrographic data compiled from NOS chart 283 (1954)
This information is not intended for navigational purposes
Polyconic projection. 10,000-foot grid ticks based on New York coordinate
system, east zone. 1000-meter Universal Transverse Mercator grid
ticks, zone 18, shown in blue. 1927 North American Datum
To place on the predicted North American Datum 1983 move the
projection lines 6 meters south and 35 meters west as shown
by dashed corner ticks
Fine red dashed lines indicate selected fence and field lines visible
on aerial photographs. This information is unchecked
Red tint indicates area in which only landmark buildings are shown
There may be private inholdings within the boundaries of
the National or State reservations shown on this map

UTM GRID AND 1982 MAGNETIC NORTH
DECLINATION AT CENTER OF SHEET

SCALE 1:24000
1 1000 0 1000 2000 3000 4000 5000 6000 7000 FEET
1 1 1/2 2 3 4 5 6 7 8 9 10 KILOMETER
CONTOUR INTERVAL 10 FEET
NATIONAL GEODETIC VERTICAL DATUM OF 1929
DEPTH CURVES AND SOUNDINGS IN FEET-DATUM IS MEAN LOW WATER
THE RELATIONSHIP BETWEEN THE TWO DATUMS IS VARIABLE
SHORELINE SHOWN REPRESENTS THE APPROXIMATE LINE OF MEAN HIGH WATER
THE MEAN RANGE OF TIDE IS APPROXIMATELY 3.1 FEET
THIS MAP COMPLIES WITH NATIONAL MAP ACCURACY STANDARDS
FOR SALE BY U.S. GEOLOGICAL SURVEY, RESTON, VIRGINIA 22092
A FOLDER DESCRIBING TOPOGRAPHIC MAPS AND SYMBOLS IS AVAILABLE ON REQUEST



ROAD CLASSIFICATION
Heavy-duty ——— Light-duty ———
Medium-duty ——— Unimproved dirt ———
U.S. Route ——— State Route ———

POUGHKEEPSIE, N. Y.
N4137.5—W7352.5/7.5
1957
PHOTOREVISED 1982
DMA 6267 III NW—SERIES V821

Revisions shown in purple and woodland compiled from
aerial photographs taken 1980 and other sources. This
information not field checked. Map edited 1982
Purple tint indicates extension of urban areas

RETURN TO:
USGS AND HISTORICAL MAP ARCHIVES

SEP 16 1982

2350