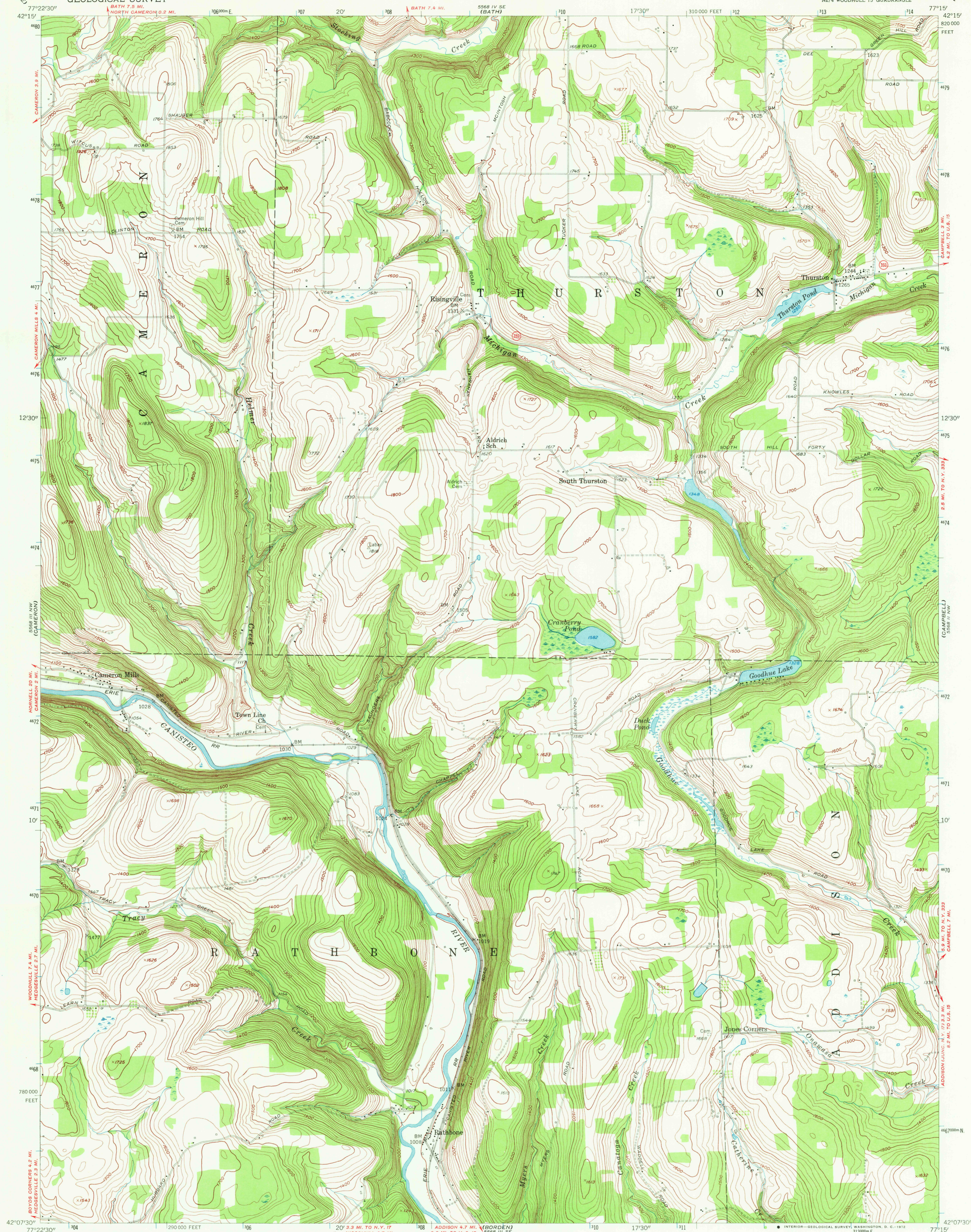
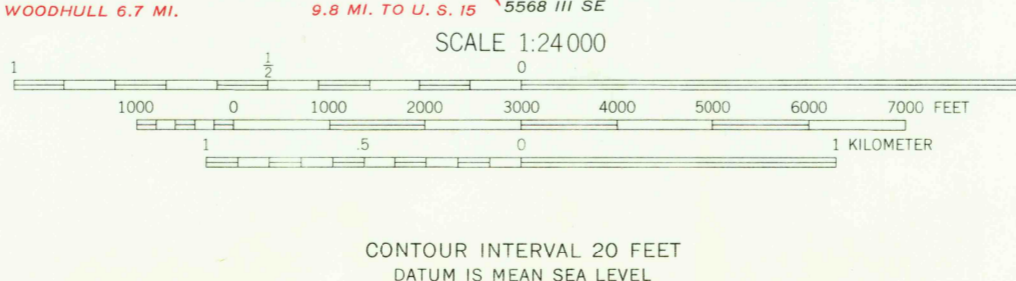
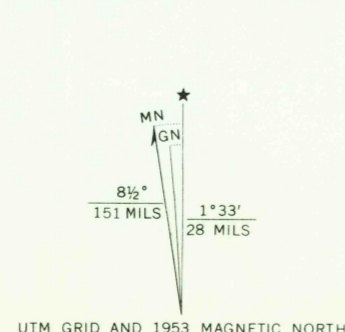


UNITED STATES
DEPARTMENT OF THE INTERIOR
GEOLOGICAL SURVEY

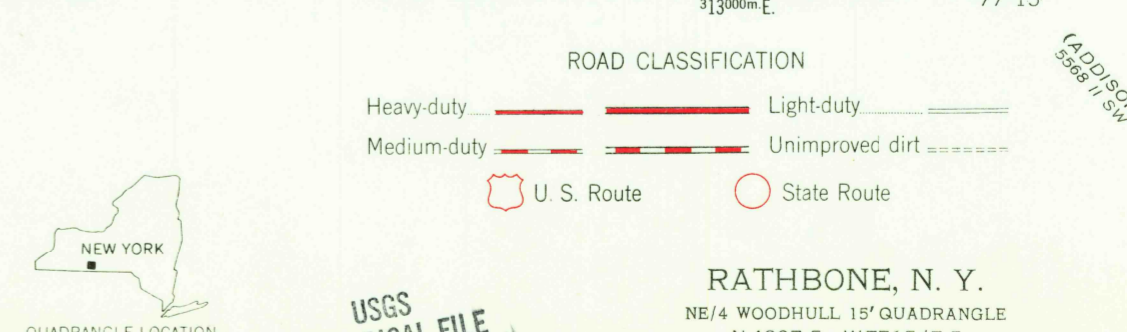
RATHBONE QUADRANGLE
NEW YORK—STEBEN CO.
7.5 MINUTE SERIES (TOPOGRAPHIC)
NE 1/4 WOODHULL 15' QUADRANGLE



Mapped, edited, and published by the Geological Survey
Control by USGS and USC&GS
Topography from aerial photographs by multiplex methods
Aerial photographs taken 1952. Field check 1953
Polyconic projection. 1927 North American datum
10,000-foot grid based on New York coordinate system,
central zone
Unchecked elevations are shown in brown
1000-meter Universal Transverse Mercator grid ticks,
zone 18, shown in blue



THIS MAP COMPLIES WITH NATIONAL MAP ACCURACY STANDARDS
FOR SALE BY U. S. GEOLOGICAL SURVEY, DENVER, COLORADO 80225, OR WASHINGTON, D. C. 20242
A FOLDER DESCRIBING TOPOGRAPHIC MAPS AND SYMBOLS IS AVAILABLE ON REQUEST



RATHBONE, N. Y.
NE 1/4 WOODHULL 15' QUADRANGLE
N 4207.5—W 7715.7.5

1953

AMS 5568 III NE—SERIES V821

MAY 23 1972

2205