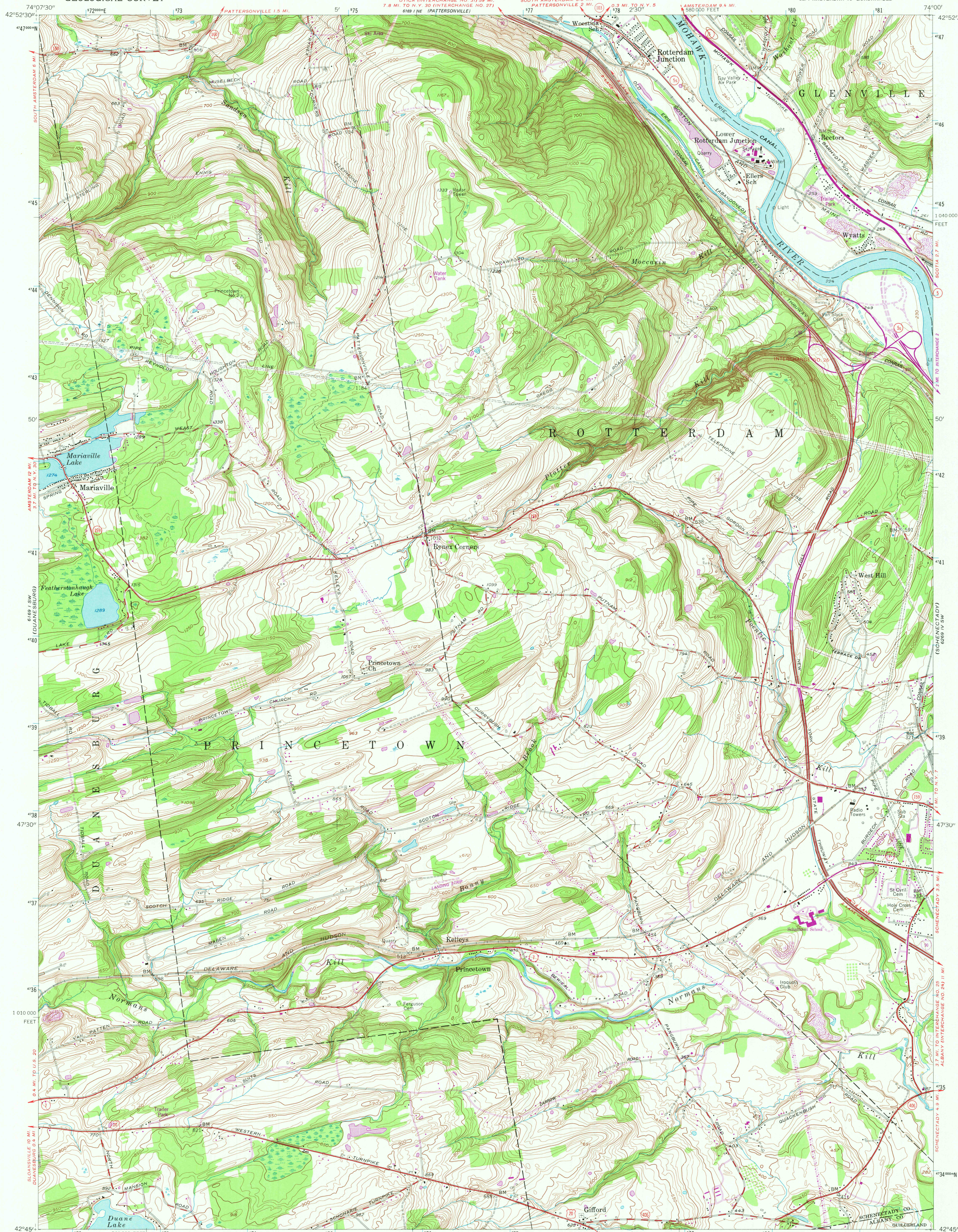
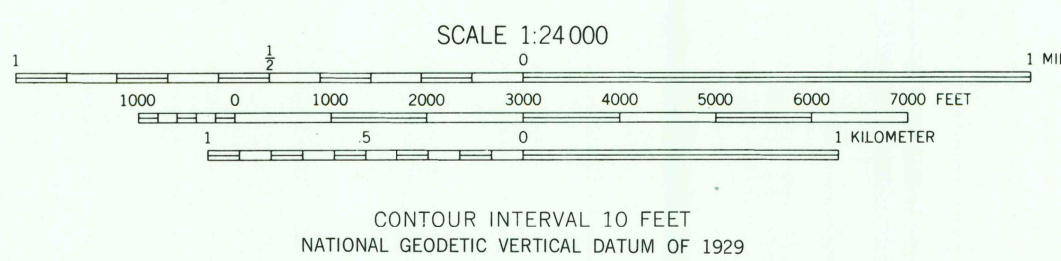


UNITED STATES
DEPARTMENT OF THE INTERIOR
GEOLOGICAL SURVEY

ROTTERDAM JUNCTION QUADRANGLE
NEW YORK
7.5 MINUTE SERIES (TOPOGRAPHIC)
SE/4 AMSTERDAM 15' QUADRANGLE



Mapped, edited, and published by the Geological Survey
Control by USGS and USC&GS
Topography from aerial photographs by stereophotogrammetric methods. Aerial photographs taken 1952. Field check 1954
Polyconic projection
10,000-foot grid based on New York coordinate system, east zone
1000-meter Universal Transverse Mercator grid ticks, zone 18, shown in blue. 1927 North American Datum
To place on the predicted North American Datum 1983 move the projection lines 4 meters south and 34 meters west as shown by dashed corner ticks
Unchecked elevations are shown in brown
There may be private inholdings within the boundaries of the National or State reservations shown on this map



THIS MAP COMPLIES WITH NATIONAL MAP ACCURACY STANDARDS
FOR SALE BY U. S. GEOLOGICAL SURVEY, RESTON, VIRGINIA 22092
A FOLDER DESCRIBING TOPOGRAPHIC MAPS AND SYMBOLS IS AVAILABLE ON REQUEST



ROAD CLASSIFICATION
Heavy-duty ——— Light-duty ———
Medium-duty ——— Unimproved dirt ———
U. S. Route ——— State Route ———
Interstate Route ———

ROTTERDAM JUNCTION, N. Y.
SE/4 AMSTERDAM 15' QUADRANGLE
N4245-W7400/7.5

1954
PHOTOREVISED 1980
DMA 6169 I SE-SERIES V821

DEC 16 1980
3300