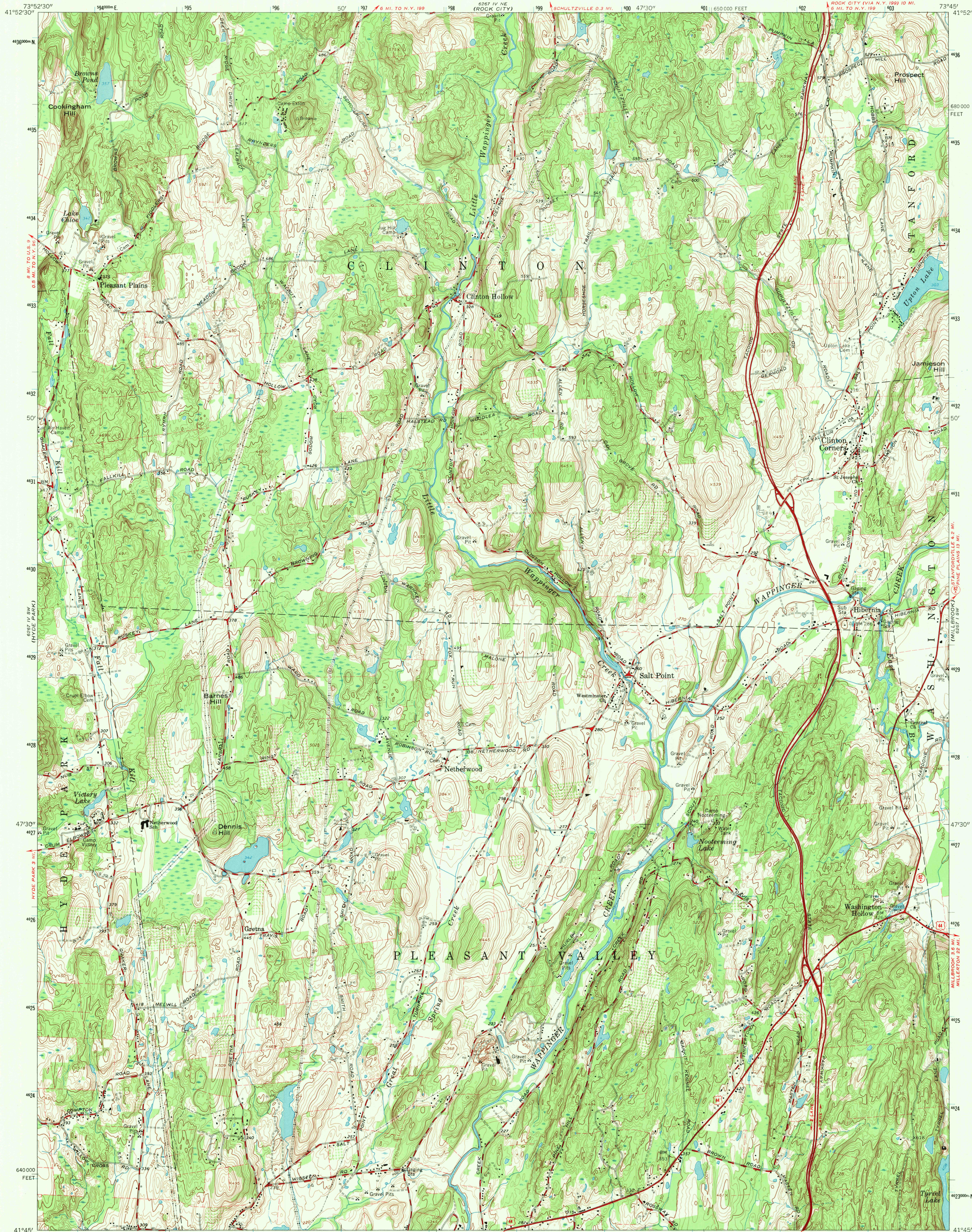


UNITED STATES
DEPARTMENT OF THE INTERIOR
GEOLOGICAL SURVEY

SALT POINT QUADRANGLE
NEW YORK-DUTCHESS CO.
7.5 MINUTE SERIES (TOPOGRAPHIC)

SE 1/4 RHINEBECK 15' QUADRANGLE
ROCK CITY (VIA N.Y. 198) 10 MI.
6 MI. TO N.Y. 199

6267 IV NE
(PINE PLAINS)



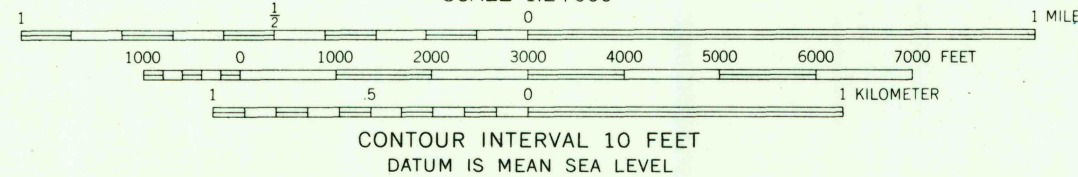
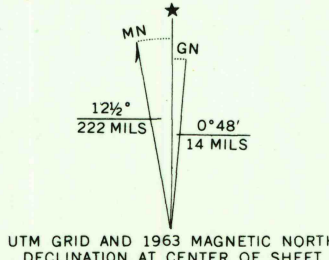
Mapped, edited, and published by the Geological Survey

Control by USGS and USC&GS

Topography by photogrammetric methods from aerial photographs taken 1962. Field checked 1963

Polyconic projection. 1927 North American datum
10,000-foot grid based on New York coordinate system, east zone
1000-meter Universal Transverse Mercator grid ticks,
zone 18, shown in blue

Fine red dashed lines indicate selected fence and field lines where
generally visible on aerial photographs. This information is unchecked



USGS
Historical File
Topographic Division



ROAD CLASSIFICATION	
Heavy-duty	Light-duty
Medium-duty	Unimproved dirt
U.S. Route	State Route

SALT POINT, N. Y.
SE 1/4 RHINEBECK 15' QUADRANGLE
N4145-W7345/7.5

1963

AMS 6267 IV SE-SERIES V821

THIS MAP COMPLIES WITH NATIONAL MAP ACCURACY STANDARDS
FOR SALE BY U. S. GEOLOGICAL SURVEY, WASHINGTON, D. C. 20242
A FOLDER DESCRIBING TOPOGRAPHIC MAPS AND SYMBOLS IS AVAILABLE ON REQUEST

MAR 26 1970