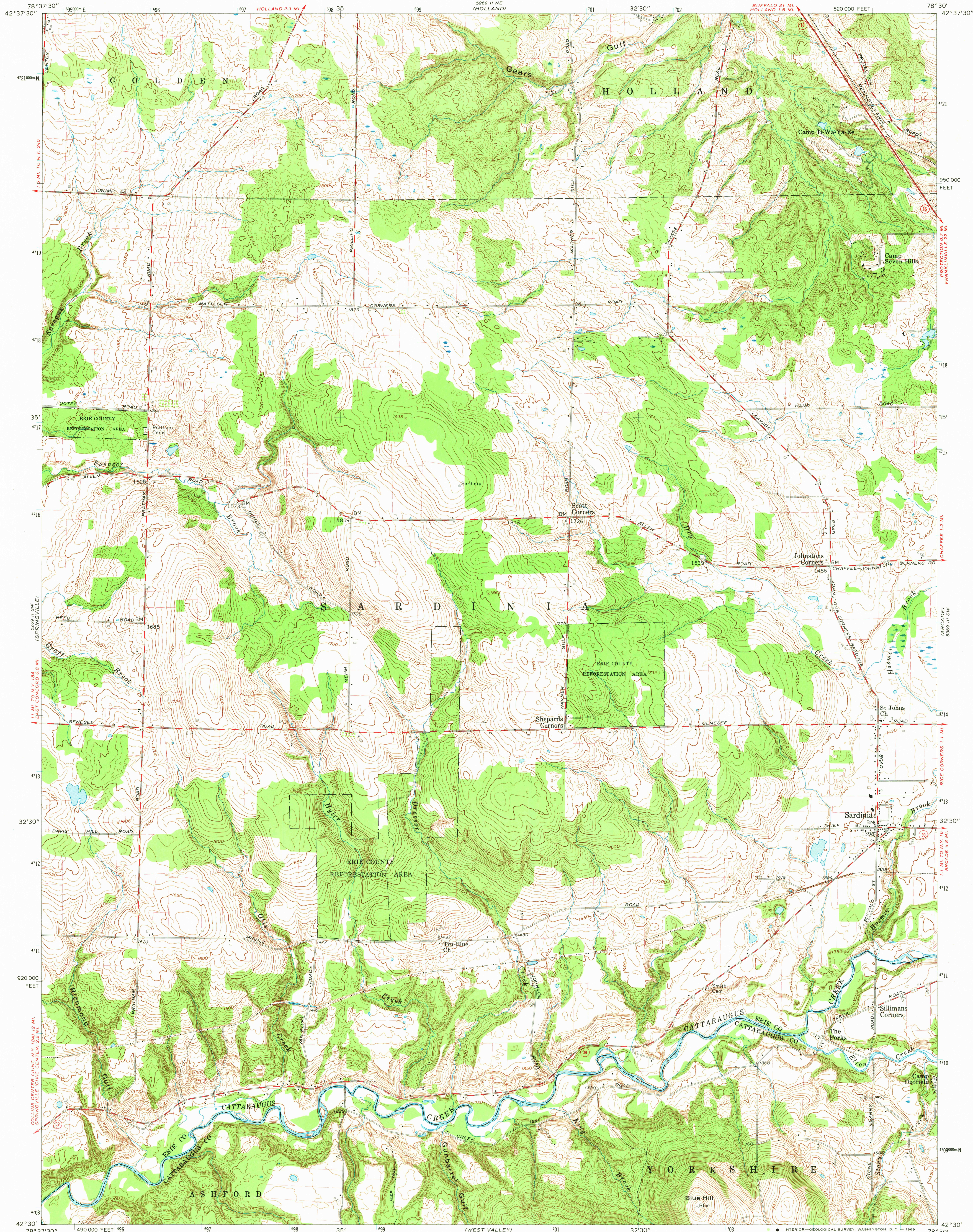
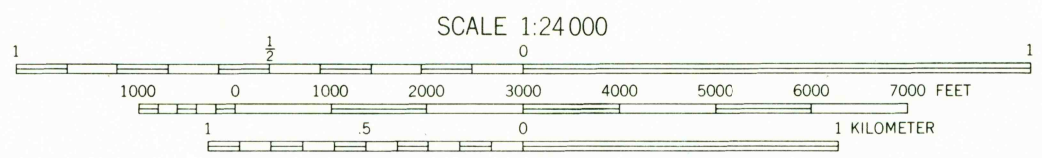


UNITED STATES
DEPARTMENT OF THE INTERIOR
GEOLOGICAL SURVEY

SARDINIA QUADRANGLE
NEW YORK
7.5 MINUTE SERIES (TOPOGRAPHIC)
SE 1/4 SPRINGVILLE 15' QUADRANGLE



Mapped, edited, and published by the Geological Survey
Control by USGS and USC&GS
Topography from aerial photographs by photogrammetric methods
Aerial photographs taken 1952. Field check 1957
Polyconic projection. 1927 North American datum
10,000-foot grid based on New York coordinate system,
west zone
1000-meter Universal Transverse Mercator grid ticks,
zone 17, shown in blue
Fine red dashed lines indicate selected fence and field lines
visible on aerial photographs. This information is unchecked
Unchecked elevations are shown in brown



THIS MAP COMPLIES WITH NATIONAL MAP ACCURACY STANDARDS
FOR SALE BY U.S. GEOLOGICAL SURVEY, WASHINGTON, D.C. 20242
A FOLDER DESCRIBING TOPOGRAPHIC MAPS AND SYMBOLS IS AVAILABLE ON REQUEST

USGS
Historical File
Topographic Division



ROAD CLASSIFICATION
Heavy-duty ——— Light-duty ———
Medium-duty ——— Unimproved dirt ———
State Route

U.S.G.S.
FILE COPY
TOPOGRAPHIC DIVISION

SARDINIA, N.Y.
SE 1/4 SPRINGVILLE 15' QUADRANGLE
N4230—W7830/7.5
1957
AMS 5269 II SE—SERIES W821

RETURN TO 1
USGS AND HISTORICAL MAP ARCHIVES
MAY 7 1969