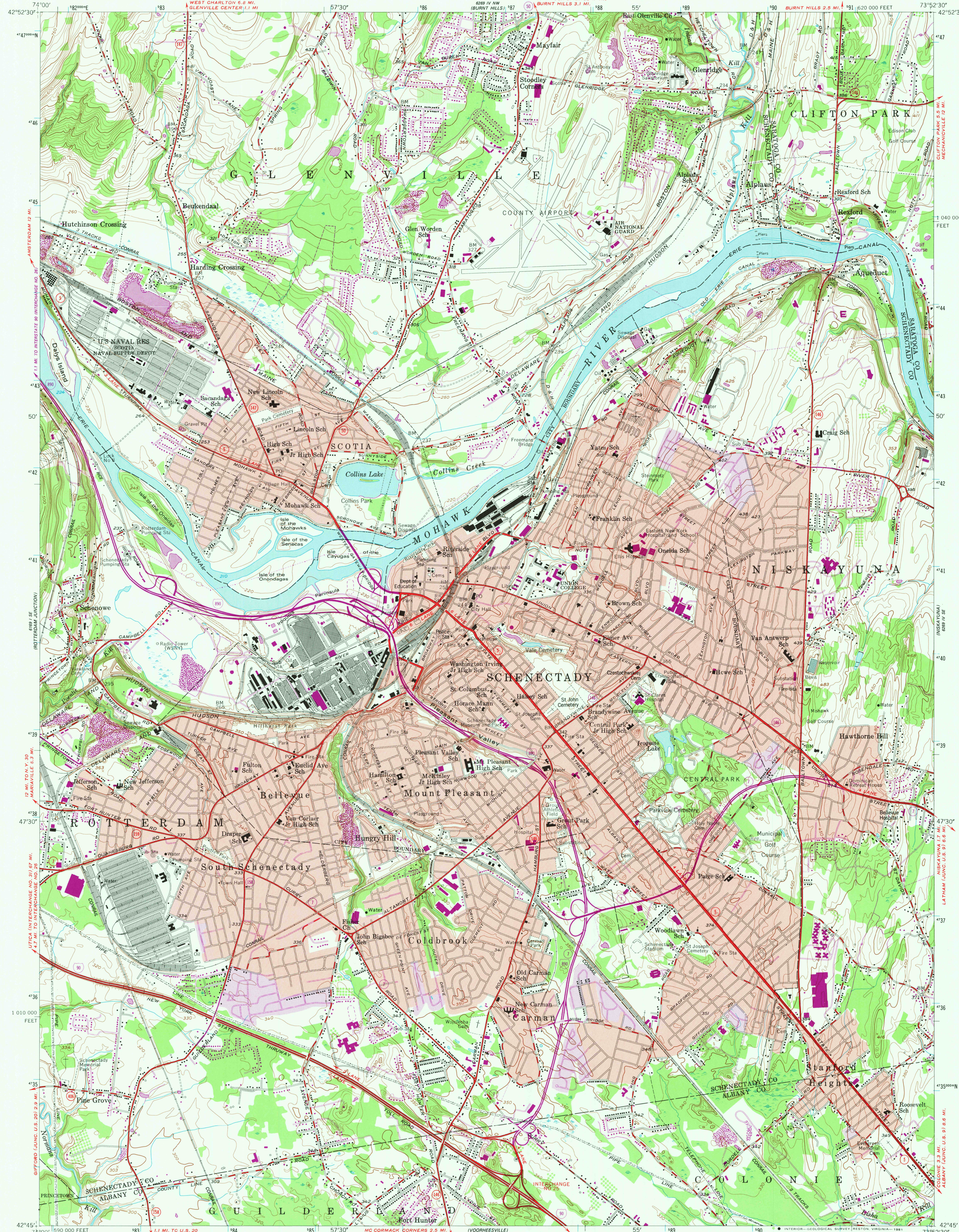


UNITED STATES  
DEPARTMENT OF THE INTERIOR  
GEOLOGICAL SURVEY

SCHENECTADY QUADRANGLE  
NEW YORK  
7.5 MINUTE SERIES (TOPOGRAPHIC)  
SW 1/4 SCHENECTADY 15' QUADRANGLE



Mapped, edited, and published by the Geological Survey  
Control by USGS and USC&GS

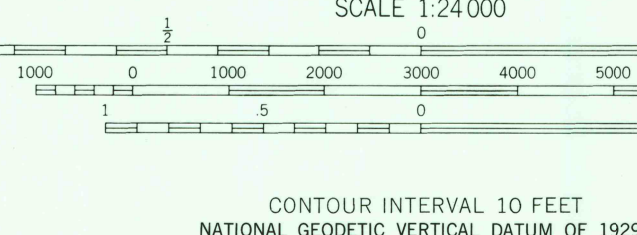
Topography from aerial photographs by photogrammetric methods. Aerial photographs taken 1952. Field check 1954

Polyconic projection  
10,000-foot grid based on New York coordinate system, east zone  
1000-meter Universal Transverse Mercator grid ticks zone 18, shown in blue. 1927 North American Datum  
To place on the predicted North American Datum 1983 move the projection lines 4 meters south and 34 meters west as shown by dashed corner ticks

Red tint indicates areas in which only landmark buildings are shown

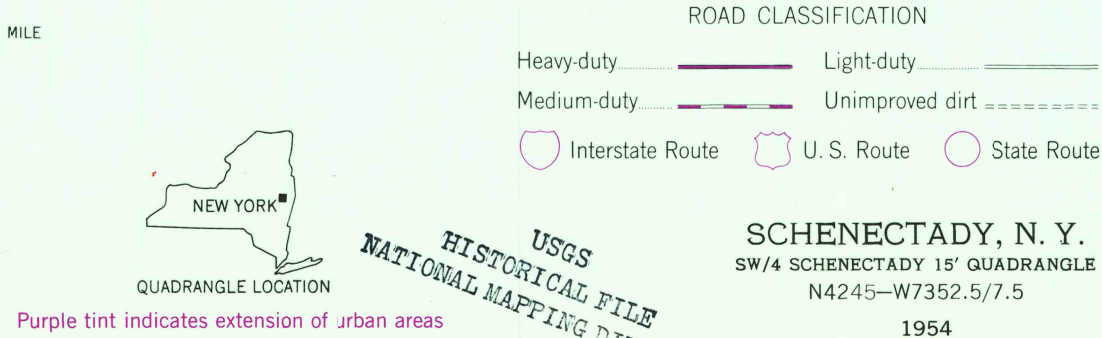
Unchecked elevations are shown in brown  
There may be private inholdings within the boundaries of the National or State reservations shown on this map

Revisions shown in purple compiled from aerial photographs taken 1978 and other source data. This information not field checked. Map edited 1980



CONTOUR INTERVAL 10 FEET  
NATIONAL GEODETIC VERTICAL DATUM OF 1929

THIS MAP COMPLIES WITH NATIONAL MAP ACCURACY STANDARDS  
FOR SALE BY U.S. GEOLOGICAL SURVEY, RESTON, VIRGINIA 22092  
A FOLDER DESCRIBING TOPOGRAPHIC MAPS AND SYMBOLS IS AVAILABLE ON REQUEST



SCHENECTADY, N. Y.  
SW 1/4 SCHENECTADY 15' QUADRANGLE  
N4245-W7352.5/7.5  
1954  
PHOTOREVISED 1980  
DMA 6269 IV SW-SERIES V821

JUN 29 1981  
2600