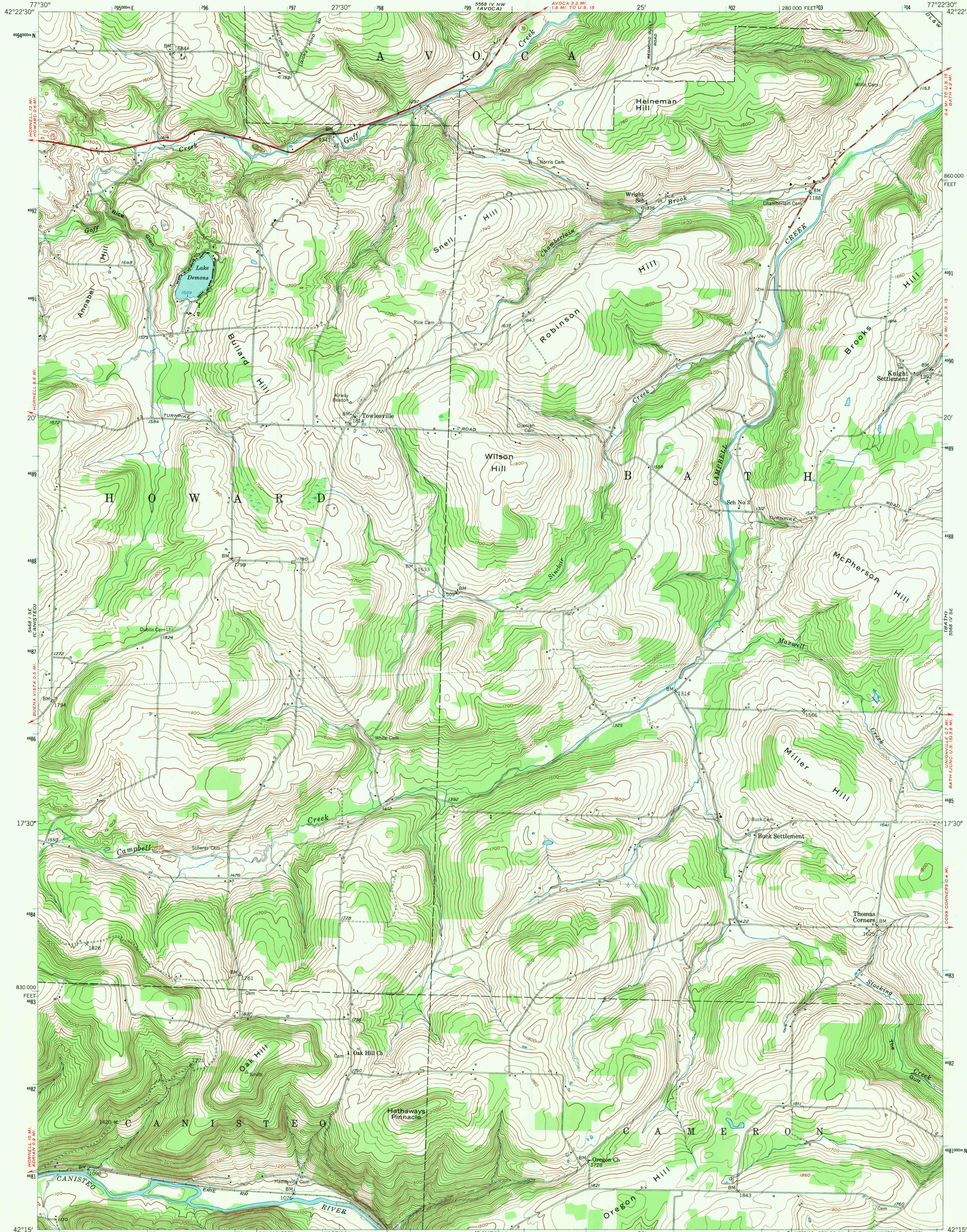
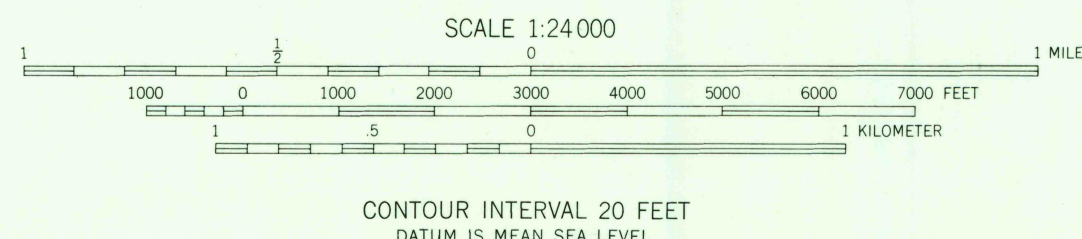
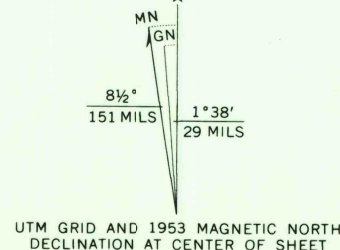


UNITED STATES
DEPARTMENT OF THE INTERIOR
GEOLOGICAL SURVEY

TOWLESVILLE QUADRANGLE
NEW YORK—STEBEN COUNTY
7.5 MINUTE SERIES (TOPOGRAPHIC)
SW/4 BATH 15' QUADRANGLE



Mapped, edited, and published by the Geological Survey
Control by USGS, USC&GS, and New York State Survey
Topography from aerial photographs by multiplex methods
Aerial photographs taken 1952. Field check 1953
Polyconic projection. 1927 North American datum
10,000-foot grid based on New York coordinate system,
central zone
1000-meter Universal Transverse Mercator grid ticks,
zone 18, shown in blue



ROAD CLASSIFICATION	
Heavy-duty	Light-duty
Medium-duty	Unimproved dirt
U.S. Route	State Route



USGS
HISTORICAL FILE
TOPOGRAPHIC DIVISION

TOWLESVILLE, N. Y.
SW/4 BATH 15' QUADRANGLE
N4215-W7722.5/7.5

1953

AMS 5568 IV SW—SERIES V821

THIS MAP COMPLIES WITH NATIONAL MAP ACCURACY STANDARDS
FOR SALE BY U. S. GEOLOGICAL SURVEY, WASHINGTON, D. C. 20242
A FOLDER DESCRIBING TOPOGRAPHIC MAPS AND SYMBOLS IS AVAILABLE ON REQUEST

2025
OCT 1 1971