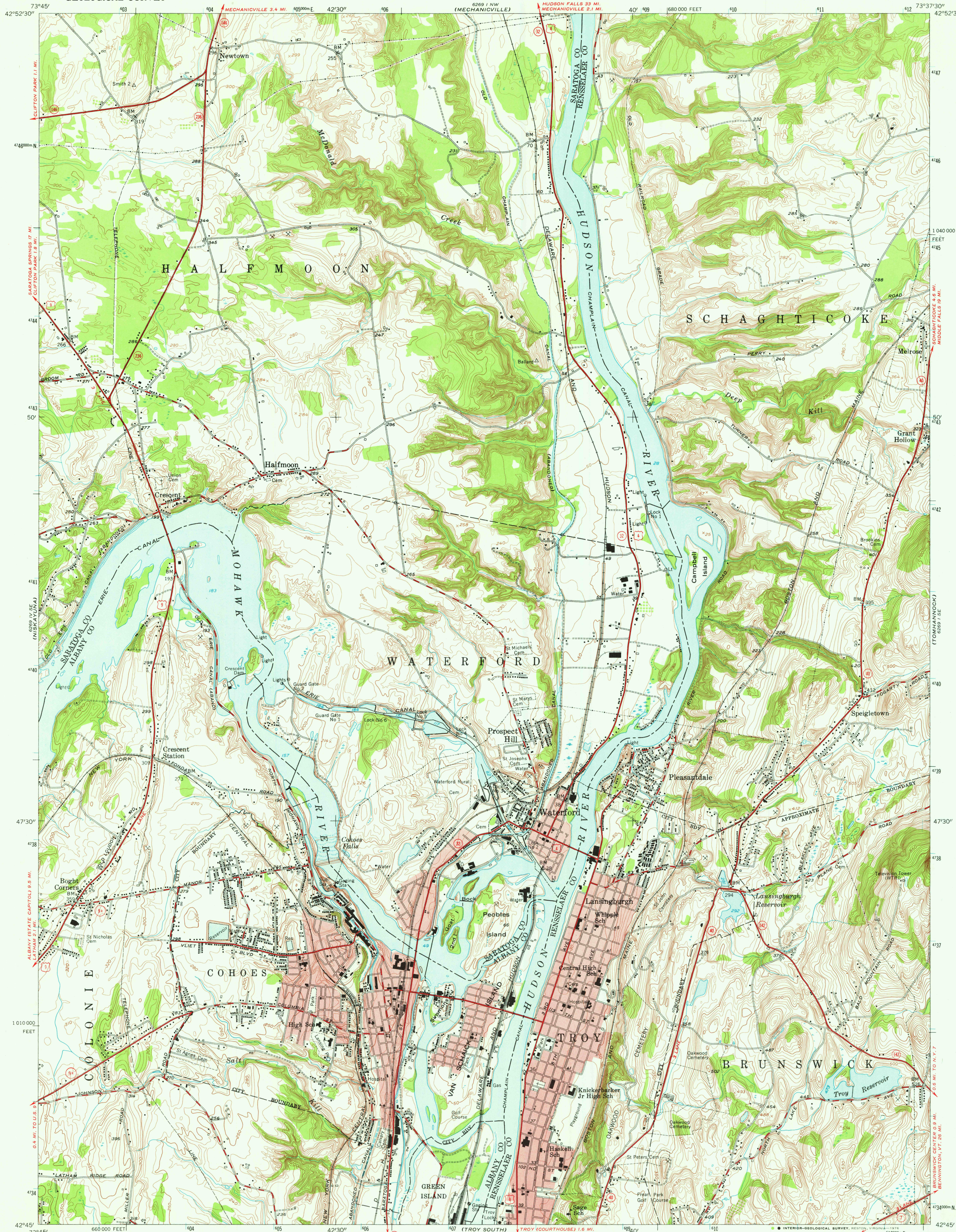


UNITED STATES  
DEPARTMENT OF THE INTERIOR  
GEOLOGICAL SURVEY

TROY NORTH QUADRANGLE  
NEW YORK  
7.5 MINUTE SERIES (TOPOGRAPHIC)

589 NE  
(SCHAGHTICOKE)



Mapped, edited, and published by the Geological Survey

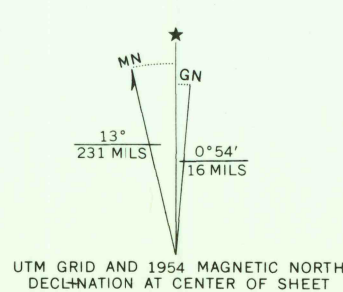
Control by USGS and USCGS

Topography from aerial photographs by stereophotogrammetric methods. Aerial photographs taken 1952. Field check 1954

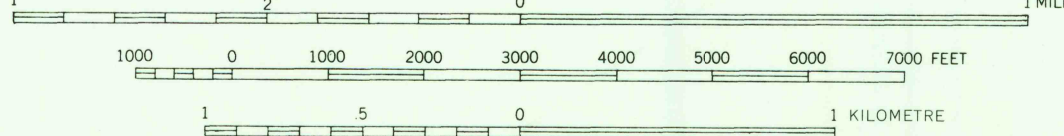
Polyconic projection. 1927 North American datum  
10,000-foot grid based on New York coordinate system,  
east zone

Red tint indicates area in which only landmark buildings  
are shown

Unchecked elevations are shown in brown  
1000-metre Universal Transverse Mercator grid ticks,  
zone 18, shown in blue



SCALE 1:24000



CONTOUR INTERVAL 10 FEET  
NATIONAL GEODETIC VERTICAL DATUM OF 1929



ROAD CLASSIFICATION	
Heavy-duty	Light-duty
Medium-duty	Unimproved dirt
U.S. Route	State Route

TROY NORTH, N.Y.

N 4245-W 7337.5/7.5

APP 9 3 1976

USGS  
Historical File  
Topographic Division

1954  
AMS 6269 1 SW-SERIES V821

THIS MAP COMPLIES WITH NATIONAL MAP ACCURACY STANDARDS  
FOR SALE BY U.S. GEOLOGICAL SURVEY, RESTON, VIRGINIA 22092  
A FOLDER DESCRIBING TOPOGRAPHIC MAPS AND SYMBOLS IS AVAILABLE ON REQUEST